

Map use education and Geovisualisation

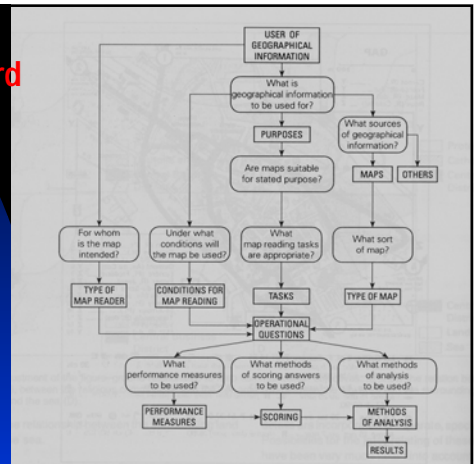
Ferjan Ormeling

11/10/2004

Surveying the Future - FIG
Jakarta 2004

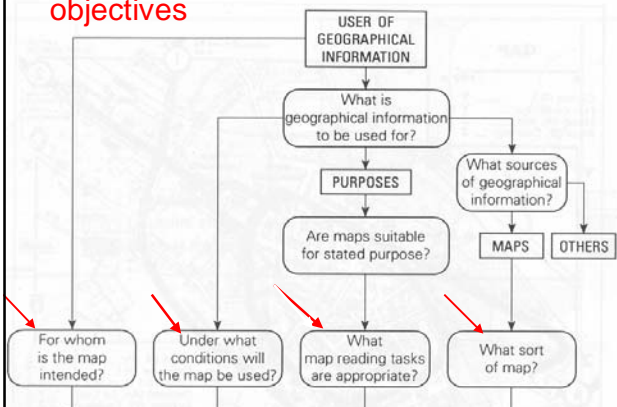
1

Chris Board
1978
Model of
map use
tasks

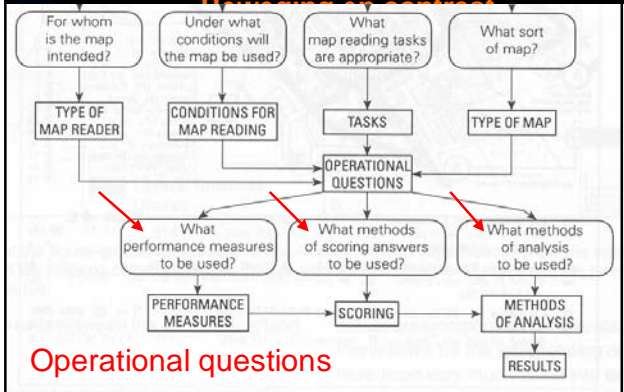


11/10/2004

objectives



Operational questions



Operational questions

Morrison's (1981) feedback categories

- Verbal forms of feedback (reviews, comments, questionnaires)
- Visual forms of feedback (eye movement studies, semantic differential, psychophysical testing)
- Behavioural feedback (direct observation, protocol analysis)

11/10/2004

Surveying the Future - FIG
Jakarta 2004

5



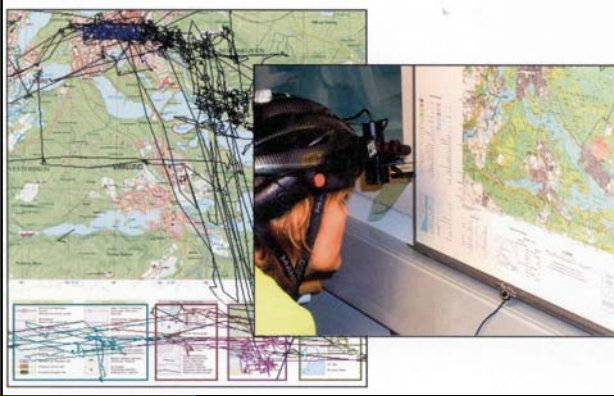
Eye
movement
studies

11/10/2004

Surveying the Future - FIG
Jakarta 2004

6

Eye movement studies

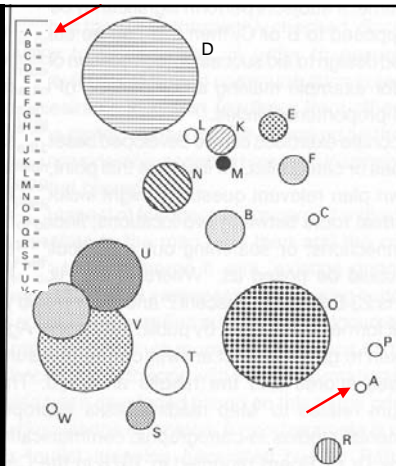


Semantic differential

(b) The "look" of the maps is -

(1) HARD	SOFT
_____ COL 552	
(11) ROUGH	SMOOTH
_____ COL 553	
(111) COARSE	FINE
_____ COL 554	
(iv) SCATTERED	CLUSTERED
_____ COL 555	
SUBTOTAL	COL 556

Psycho-physical testing



11/10/2004

Thinking aloud method



11/10/2004



Applications of the thinking aloud method in cartography

- How do blind people acquire knowledge from tactile maps
- How do people identify regions on topographic maps
- How do we make sense of contour lines
- How do we understand orienteering maps
- How do we perform way finding tasks
- How to develop a model of a region on the basis of geospatial data
- etc

11/10/2004

Surveying the Future - FIG
Jakarta 2004

12

Map use phases

- Map reading
- Map analysis
- Map interpretation

11/10/2004

Surveying the Future - FIG
Jakarta 2004

13

Skills and concepts underlying map use

Underlying skills	Relevant concepts	subconcepts
describing/identifyin	spatial location	site situation
classifying	distance	
	spatial distribution	group
relating	spatial association	horizontal vertical
	spatial interaction	
	region	
interpreting	spatial structures	

11/10/2004

Surveying the Future - FIG
Jakarta 2004

14

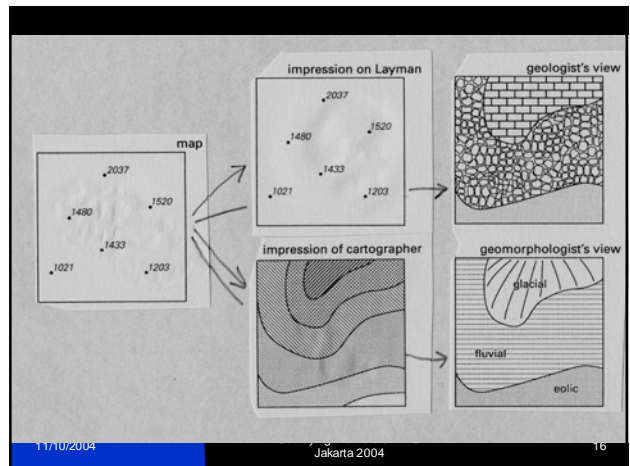
Steps in map use programmed instruction

- What is on a map (identify)
- What is where on the map (classify)
- What relationships are visible on the map (relate)
- Are these relationships valid all over the map (check, monitor)
- etc

11/10/2004

Surveying the Future - FIG
Jakarta 2004

15



11/10/2004

Surveying the Future - FIG
Jakarta 2004

16

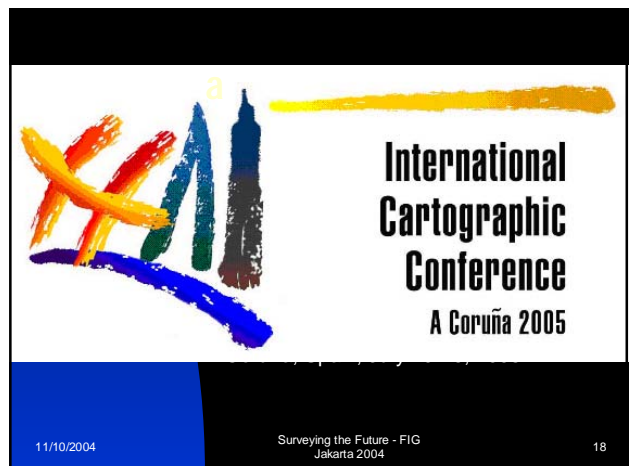
ICA activities in the field of map use education

- Commission on children and cartography
- Seminars for specialised map users:
 - agronomists
 - risk managers
- Commission on education and training

11/10/2004

Surveying the Future - FIG
Jakarta 2004

17



11/10/2004

Surveying the Future - FIG
Jakarta 2004

18

ICA activities in the field of map use education

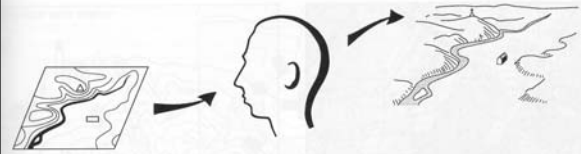
- Commission on children and cartography
- Seminars for specialised map users:
 - agronomists
 - risk managers
 -
- Commission on education and training

11/10/2004

Surveying the Future - FIG
Jakarta 2004

19

Visualising geospatial information



11/10/2004

Surveying the Future - FIG
Jakarta 2004

20