



XXVII FIG CONGRESS

11-15 SEPTEMBER 2022
Warsaw, Poland

Volunteering
for the future –
Geospatial excellence
for a better living

Improving Land Governance Through Innovative and Rapid Settlement Profiling Platform

Solomon Njogu and Danilo Antonio
UN-Habitat / Global Land Tool Network



ORGANISED BY



PLATINUM SPONSORS



Introduction

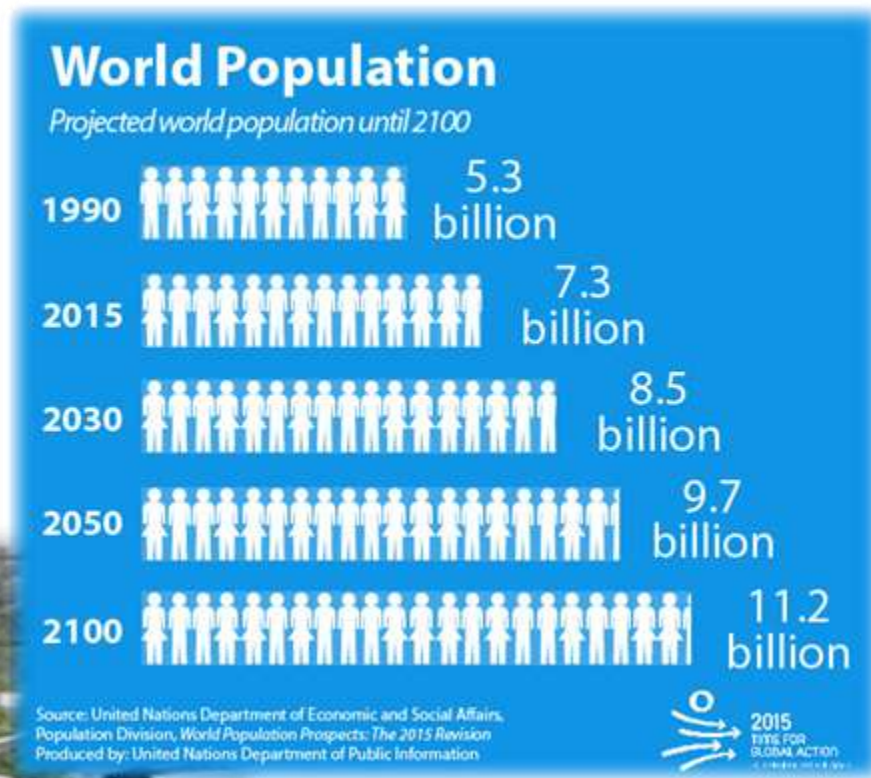
Rapid urbanization is increasing against the limited resources (e.g. urban sprawl 175% by 2030, slums)

About 2.5 billion more people will be living in cities by 2050 – 6.7 billion (68.4%) by 2050 in total.

Complex challenges of inequality and governance

Covid-19 pandemic? Conflict? What next?

What are the lessons learnt?



Global Commitment on Sustainable Urbanization

Leaving no one behind will require an intensified focus on urban slums – home to 1 billion people.

The Sustainable Development Goals (SDG) 11

- Target 11.1: By 2030, ensure access for all to adequate, safe and affordable housing and basic services and upgrade slums
- NUA - Adopt and implement disaster risk reduction and management, reduce vulnerability, build resilience and responsiveness.
- Strategic Plan 2020-2023 Outcome 4: Effective urban crisis prevention and response

LEAVING NO ONE BEHIND
WILL REQUIRE AN **INTENSIFIED FOCUS ON**
1 BILLION SLUM DWELLERS



Learning by Doing – Covid-19 Experience

Strong commitment through the 2020 Covid-19 Response Plan

- Strengthen the urban data evidence to shape local responses
- To support data collection, mapping and analysis using smart technologies
- Leveraging partnership its extensive network of partners on the ground



GLTN Objectives

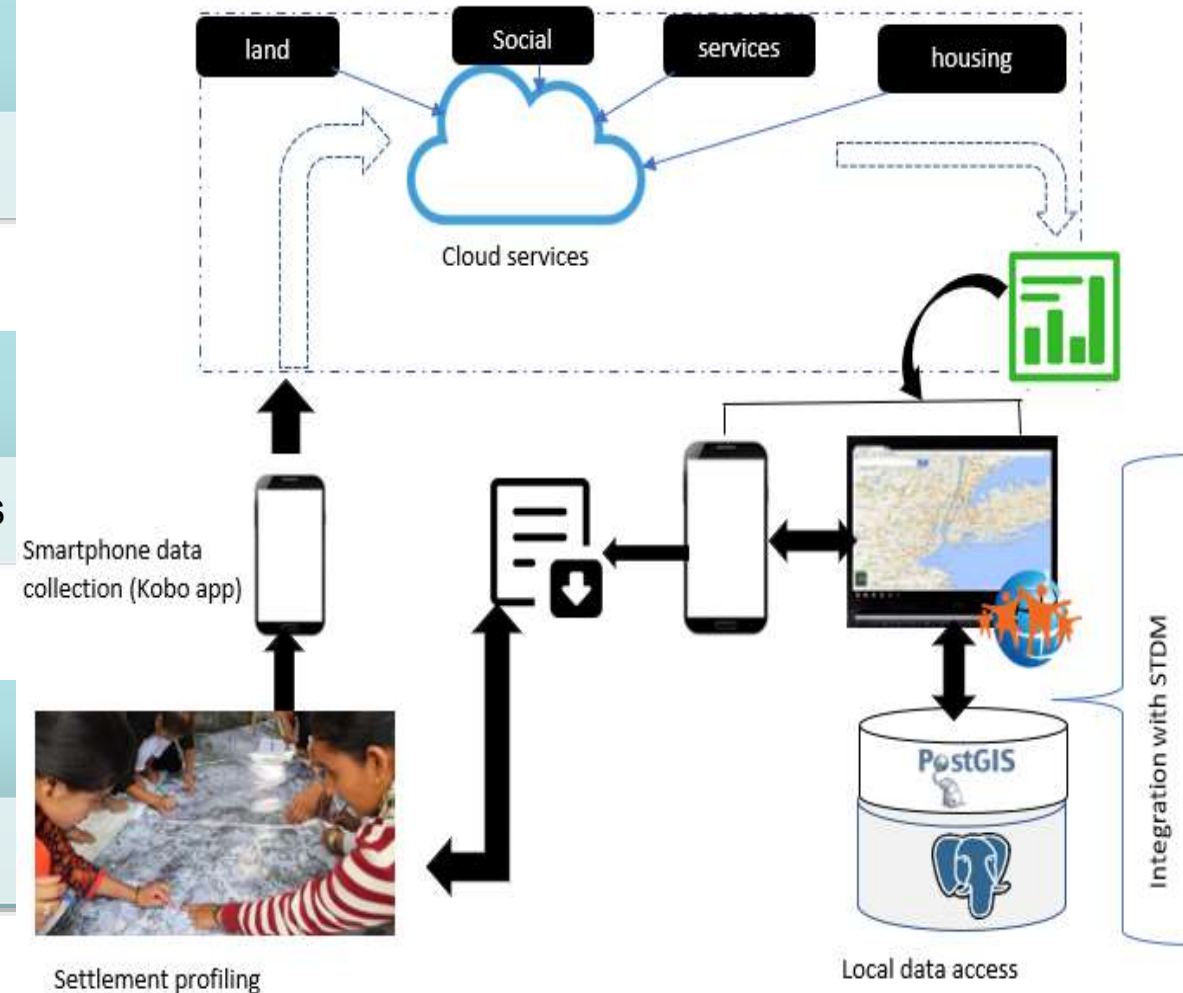
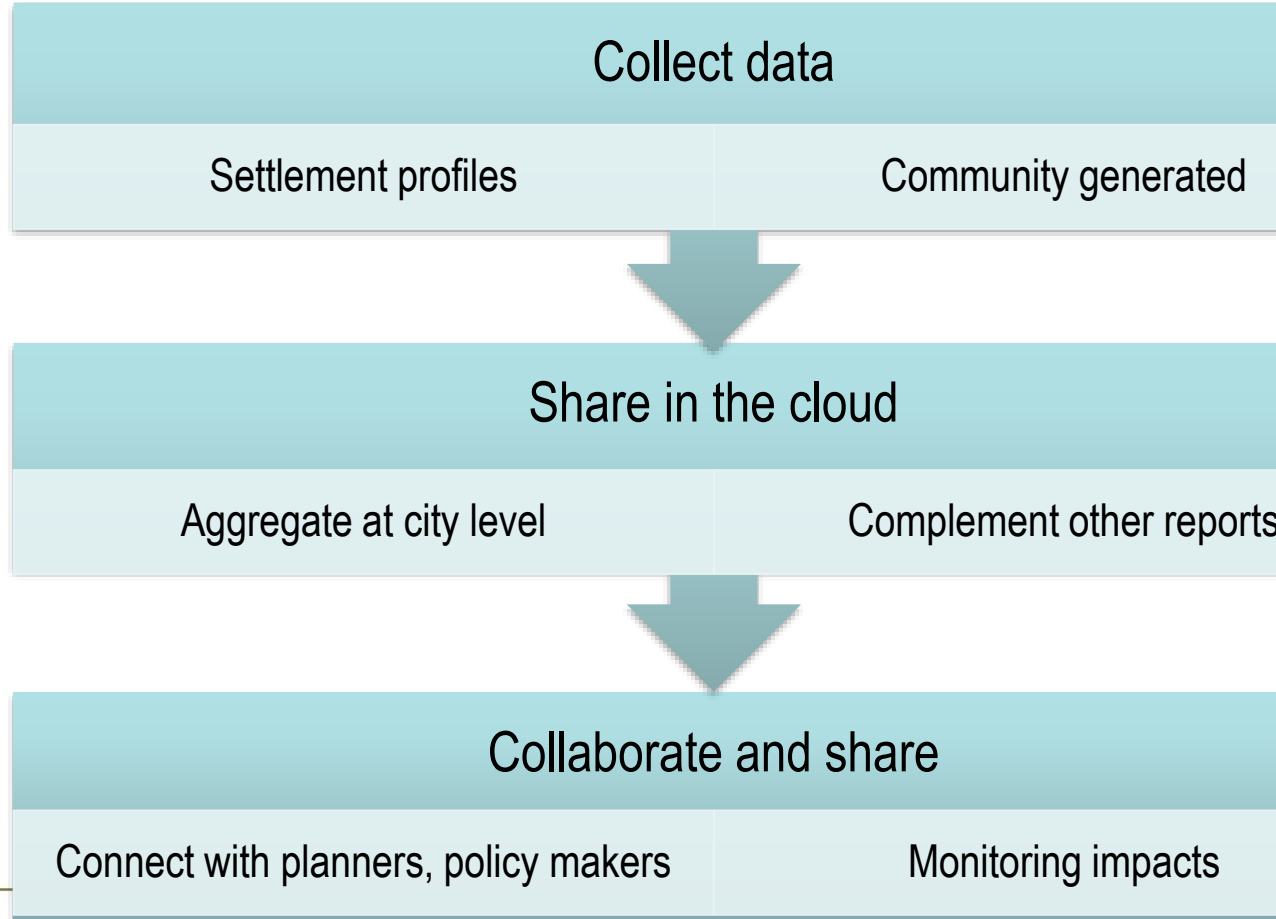
- Build on Social Tenure Domain Model / FFP LA experiences - Holistic and comprehensive interventions on land and housing tenure, slum upgrading and city-wide profiling and development – GLTN is working in **over 10 countries in Africa and Asia pacific.**
- Scale the PSUP and GLTN interventions in settlement upgrading– **PSUP has over 23 countries in Africa but in different scales. Around 15 at neighborhood level.**
- Focus on one tool and one data solution and scale down on duplication – coordination and integration

■■ BRIEF 1/2014 ■■

ADDRESSING THE INFORMATION
REQUIREMENTS OF THE URBAN POOR
STDM PILOT IN UGANDA

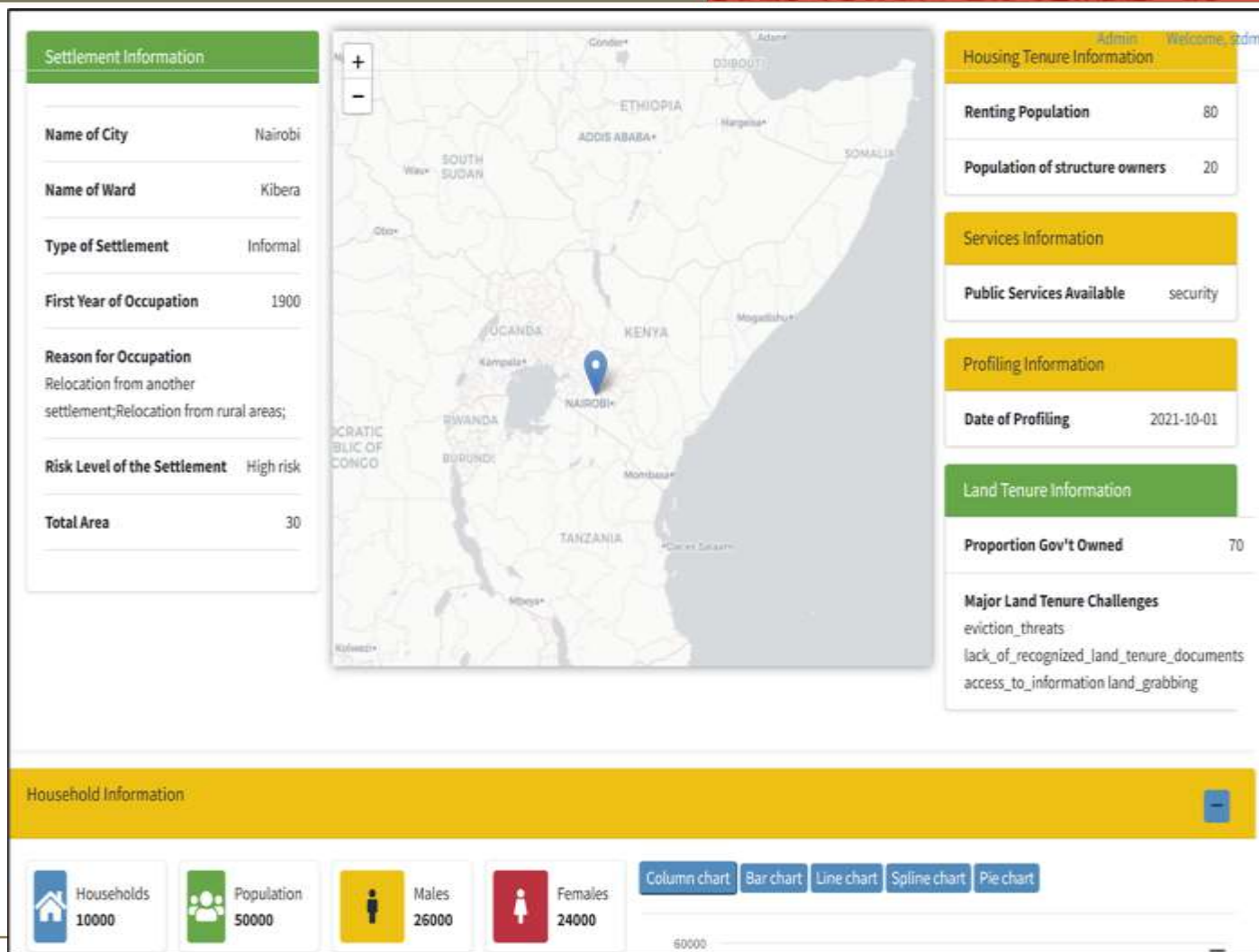


Design of City-wide Profiling Cloud-based Platform



One Tool One Data Approach

- Settlement profiling dashboard
- Community Driven data collection
- Real-time data access and visualization
- Contributions by partners in quality control of the data
- Pilot test in 4 countries – Kenya, Uganda, Nepal, Zambia



Integrated Dashboard – based on the Social Tenure Domain Model Framework

Settlement Information

Select Form*

- Nepal Settlement profiling
- Philippines Settlement profiling
- Nepal Settlement profiling**
- Settlement profiling
- Uganda Settlement profiling
- Kenya Settlement profiling
- Zambia Settlement profiling
- Kakuma settlement

Load Data

Settlement Profiles Table View

City/Town: Dangisharan

City/Town: Kathmandu

Nepal Settlement profiling

▼ Profile Information

Date of profiling yyyy-mm-dd
Data Collector surname
Data collector first name
Data collector other names
gender <input type="radio"/> Male <input type="radio"/> Female
Contacts:

City/Town: Dangisharan

No of Profiled Settlements: 1

Total Profiled Settlement Area: 0.07 Sq.KM

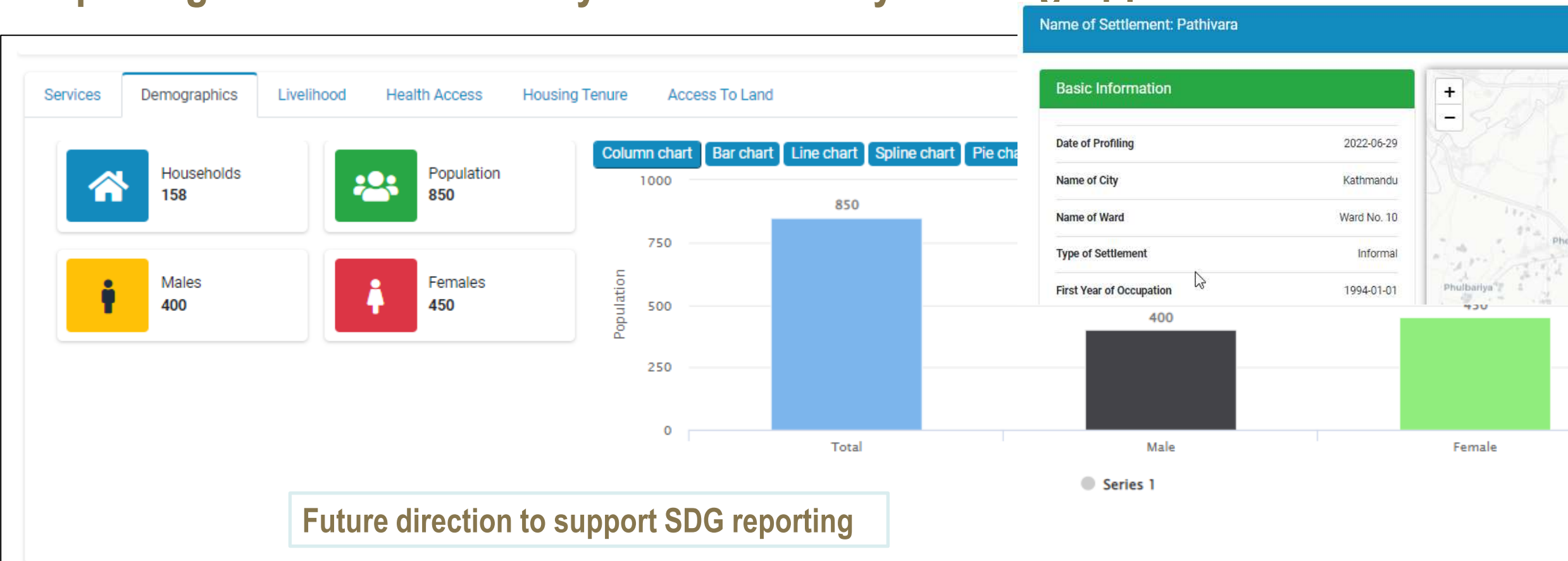
Major Tenure Challenges: +

Public Services Available: +

Total Families/Households: -

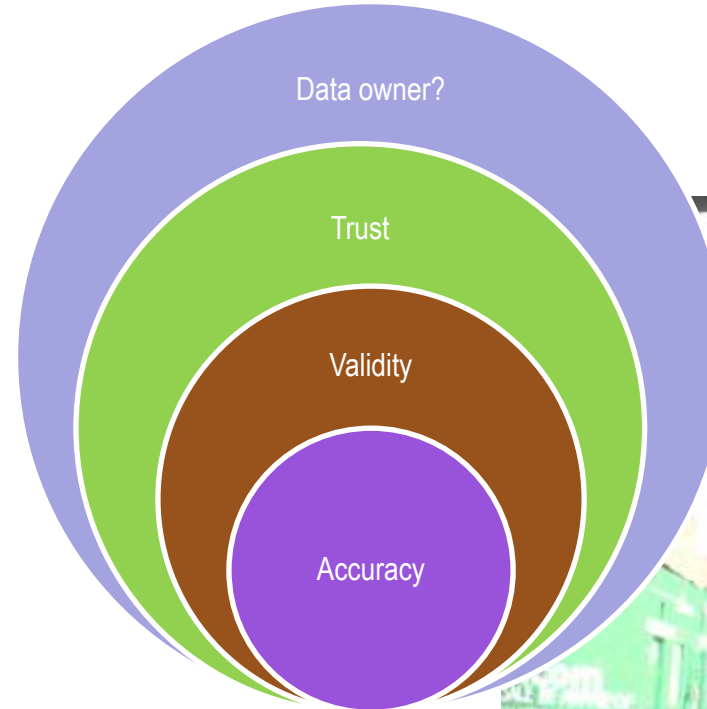
Total Population	82.0 %
Number of Households	18.0 %

Reporting and Statistical Analysis towards City Profiling Approach



Gaps and Challenges

- Data security in the cloud
- Building trust with policymakers
- Acceptance by policymakers
- Continuous updating
- Multiple language and local dialects



Way Forward and Next Steps

- Reach out to policymakers and planners at the city level
- Engage with more partners in testing and scaling up at the country/ city level
- Enhance reporting on SDGs and spatial analysis
- Promote continuous data generation by partners and communities
- Linkage to planning and policy discussions

Services
Demographics
Livelihood
Health Access
Housing Tenure
Access To Land

Major Sources of Income:	Temporary employment
Average Income Levels Per Month:	10001- 20000
Types of Savings Schemes Available:	Cooperative
Highest Expenditure Item Per Month:	Food Transport Education Other

Services
Demographics
Livelihood
Health Access
Housing Tenure
Access To Land

Services in the Settlement

Public services available in the settlement:	Public transport Roads Electricity
---	--

Priorities Services

Type of ongoing development projects:	Roads
Major priorities identified:	Housing and land tenure Water and drainage Sanitation/ sewerage

NEED TO KNOW MORE?

GLTN Secretariat
UN-Habitat, P.O Box 30030, Nairobi 00100, Kenya

gltn@unhabitat.org

www.gltn.net