



**Presented at the FIG Congress 2018  
May 6-11, 2018 in Istanbul, Turkey**

# Towards a More Consistent Geoid Model for North America (9619)

Kevin M. Ahlgren<sup>1</sup>, Yan-Ming Wang<sup>1</sup>, Xiaopeng Li<sup>2</sup>, Monica A. Youngman<sup>1</sup> (USA)

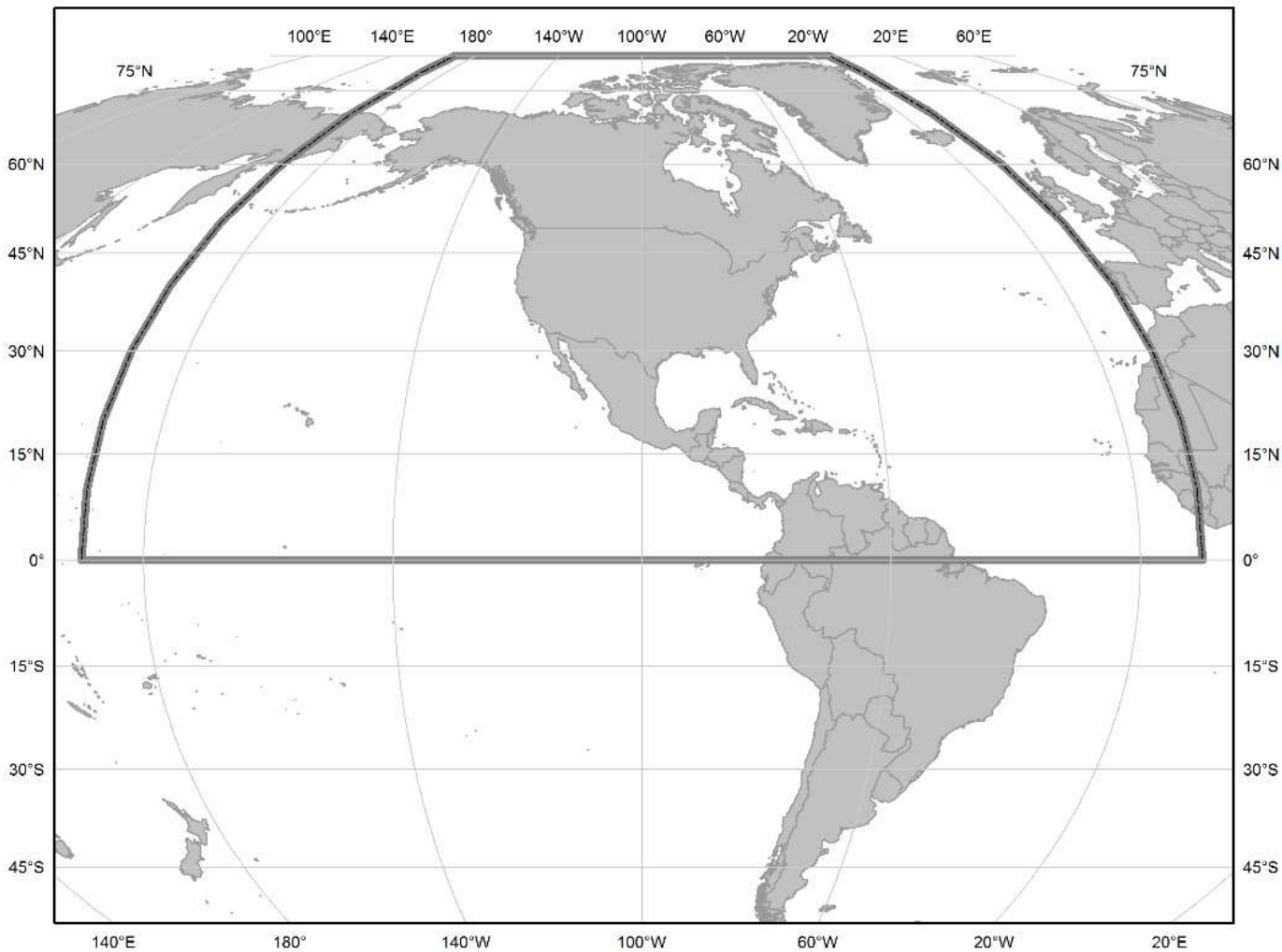
<sup>1</sup>NOAA's National Geodetic Survey

<sup>2</sup>ERT Inc.

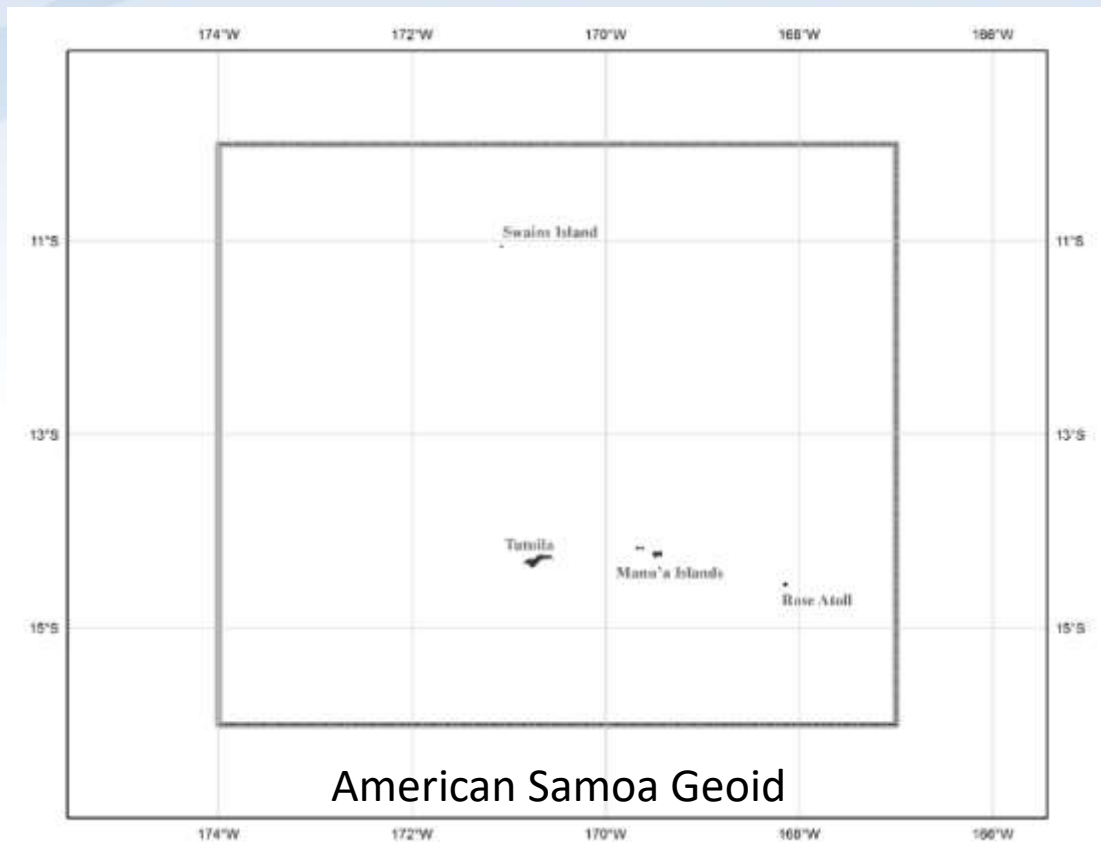
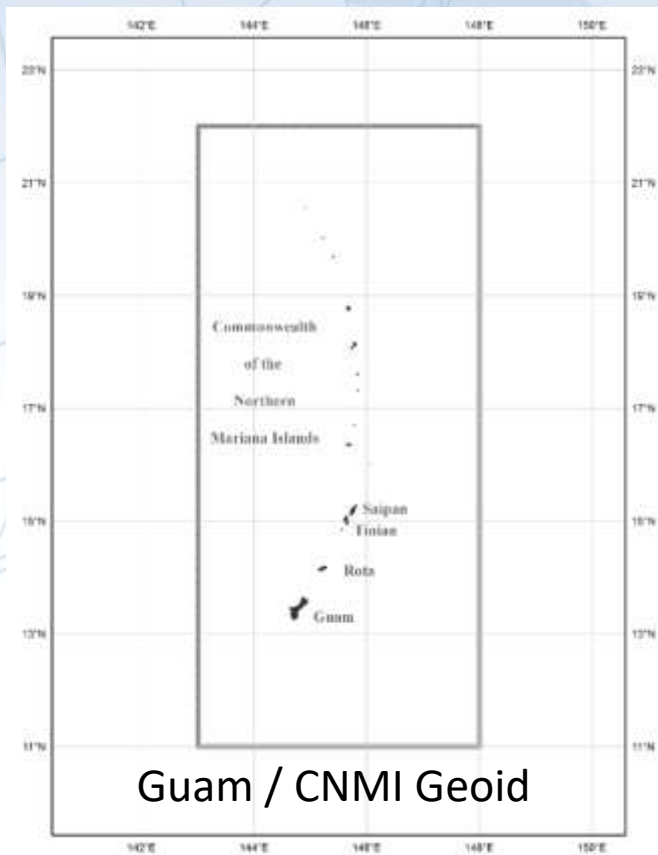
# GEOID2022

NOAA

[noaa.gov](https://noaa.gov)



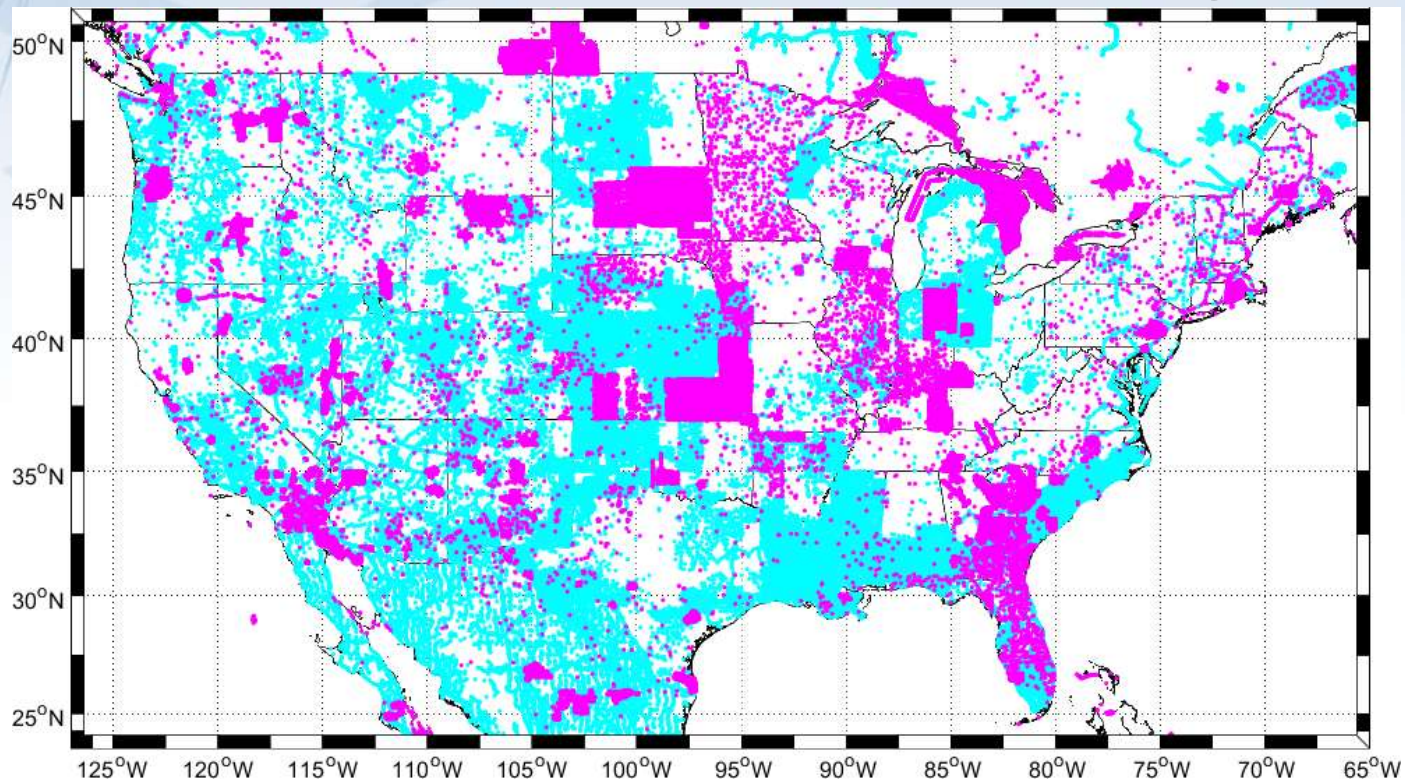
# Additional Geoids in US Pacific Islands



# International Cooperation & Collaboration

- National Geospatial-Intelligence Agency (NGA)
  - NGA Surface Gravity Data where allowable
  - NGS GRAV-D data
  - NGA Preliminary Geopotential Models (PGMs)
- Geodetic groups within North America
  - Canadian Geodetic Survey (CGS) & Mexico's Instituto Nacional de Estadística y Geografía (INEGI)
- Other Groups
  - Agreements for data from Greenland (DTU), Iceland, etc.

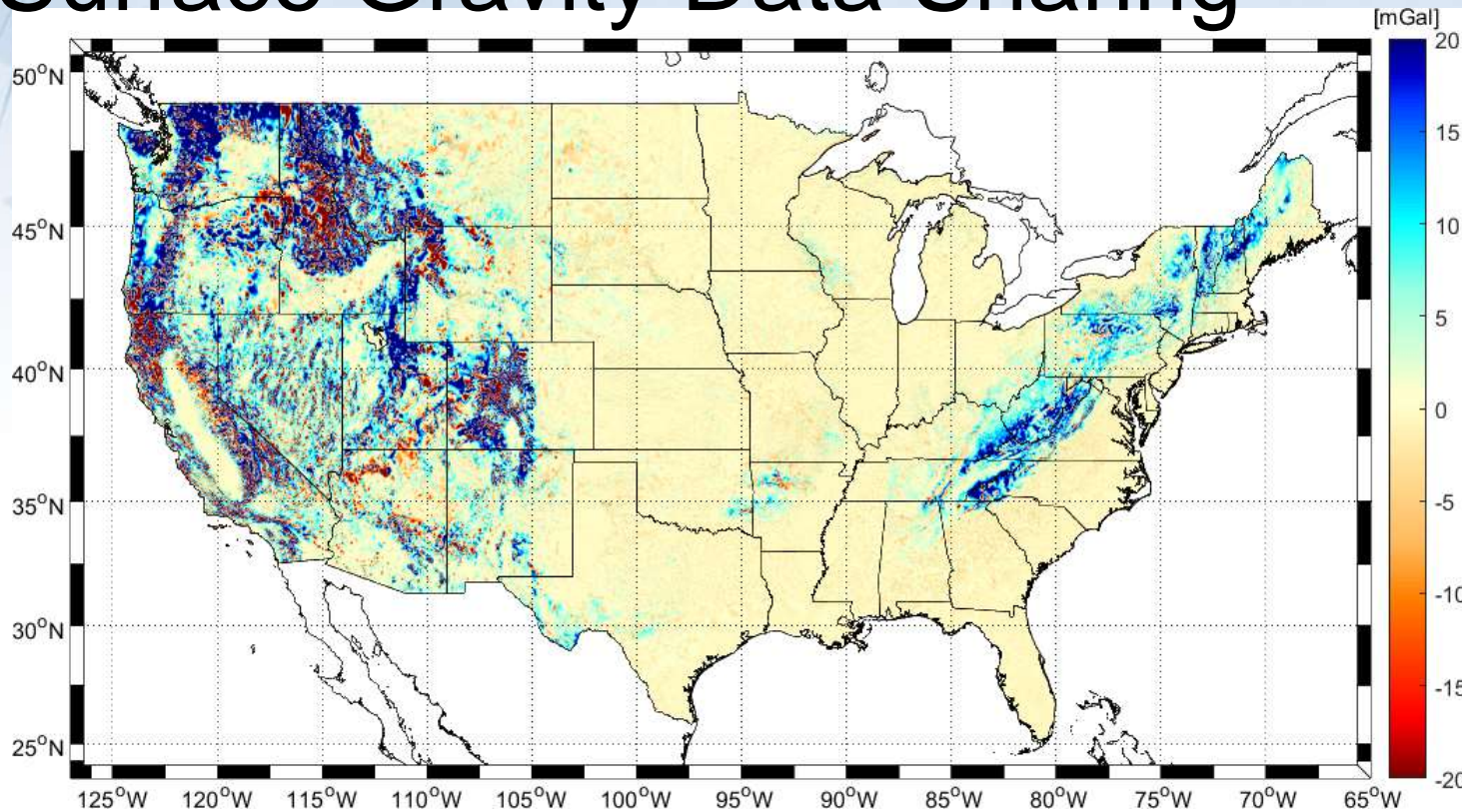
# NGA: Surface Gravity Data Sharing



CONUS with Unique Gravity Data from NGA (magenta) and NGS (cyan)



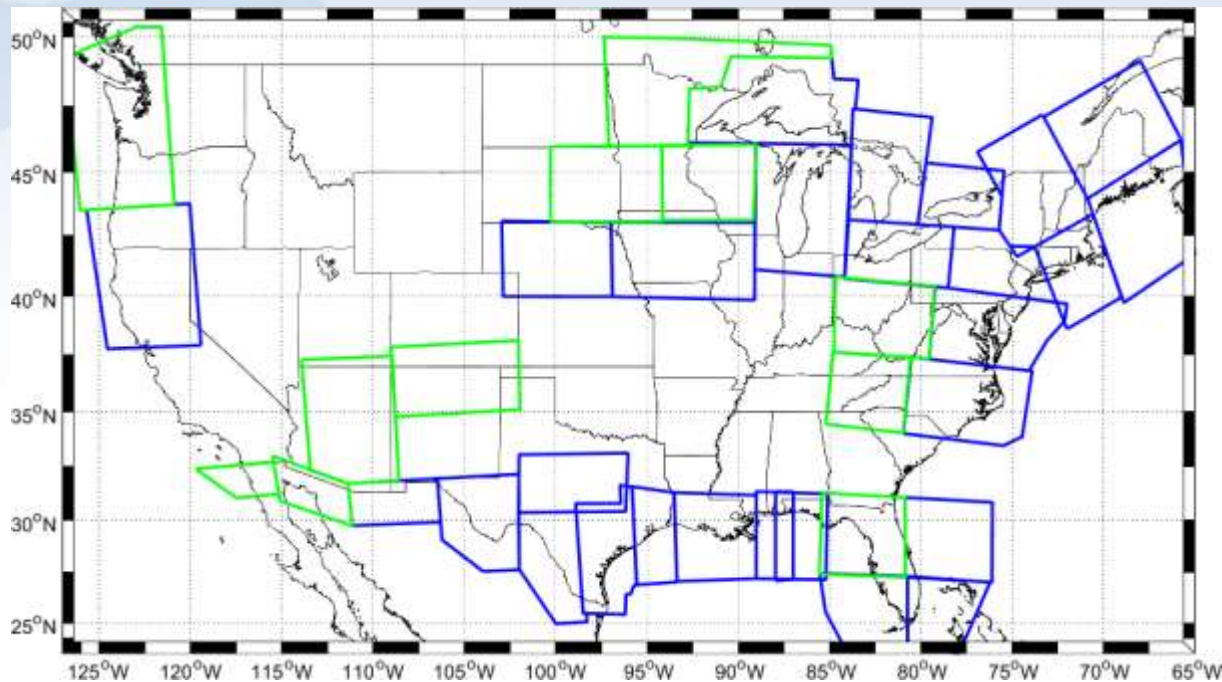
# NGA: Surface Gravity Data Sharing



Free-Air Anomaly Difference between NGA data and NGS data at Duplicated Points

# NGA: GRAV-D Sharing

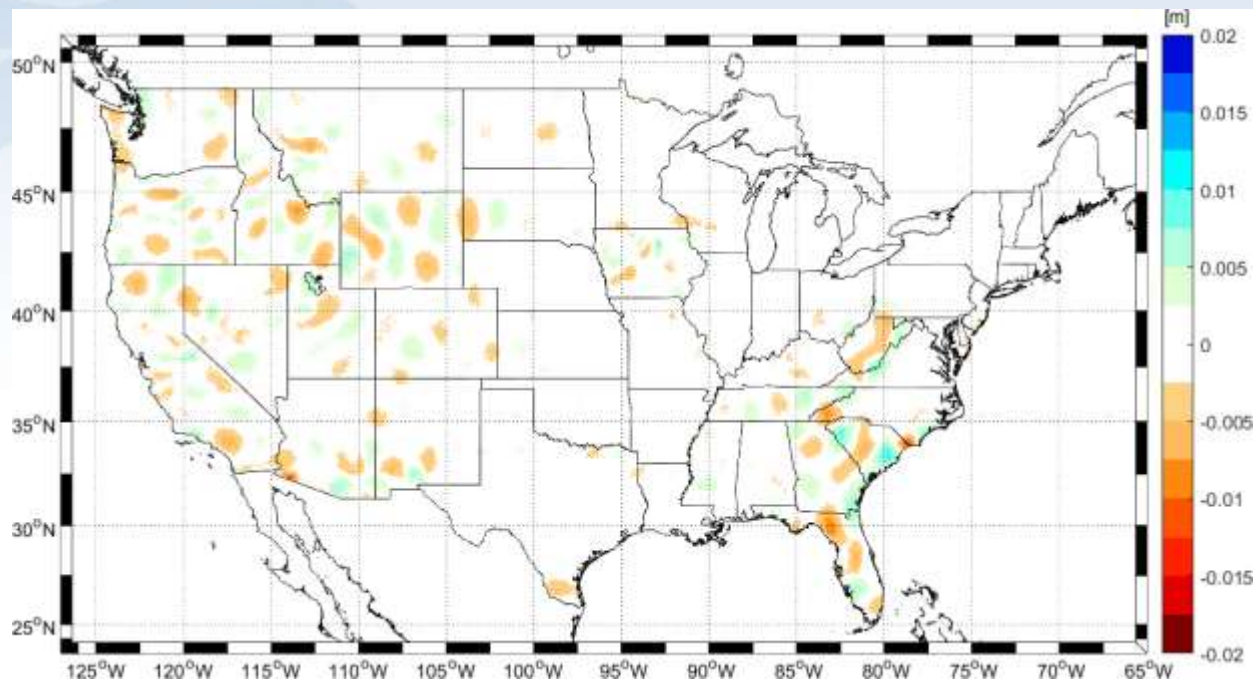
- GRAV-D major source of new data for NGA's EGM2020
- NGS will share 'cleaned' data annually (~June)
- Fits into NGA reference model schedule for EGM2020.



GRAV-D Data Blocks Included in PGM17 (blue) and GRAV-D Data Blocks Ready for PGM18 (green)

# NGA: PGM Validation

- EGM2020 release in Dec. 2019
- Annual PGM reference models
- PGM17 released in Dec. 2017
- Nearly identical to NGS REF17B model



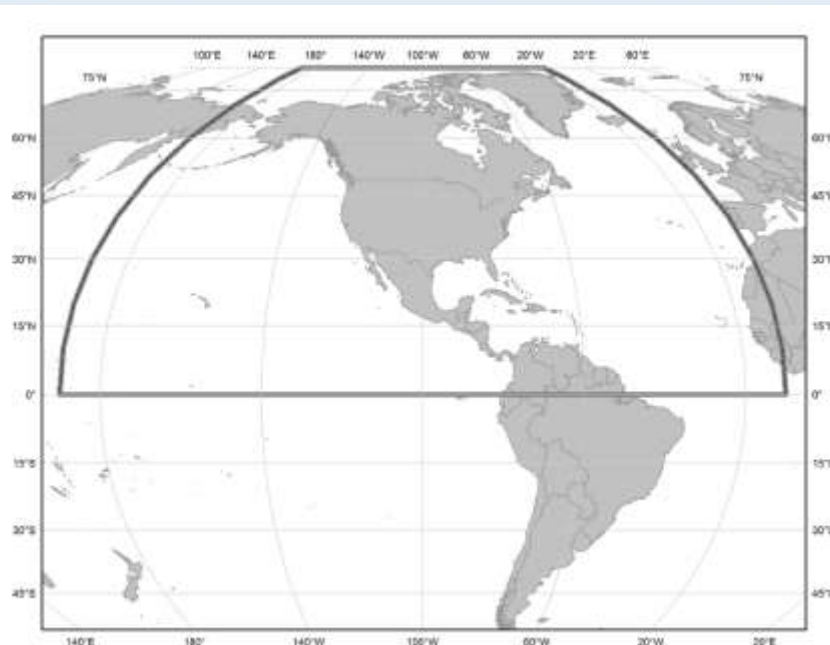


# Common Datasets: CGS, INEGI, & NGS

- Differences in North American Geoid Models:
  - 1) Different modeling (theory)
  - 2) Different input datasets
- Project initiated to address 2) → Common Datasets
  - Surface gravity data (terrestrial, shiptrack, altimetry)
  - Airborne gravity data (GRAV-D)
  - DEM
  - Satellite gravity model

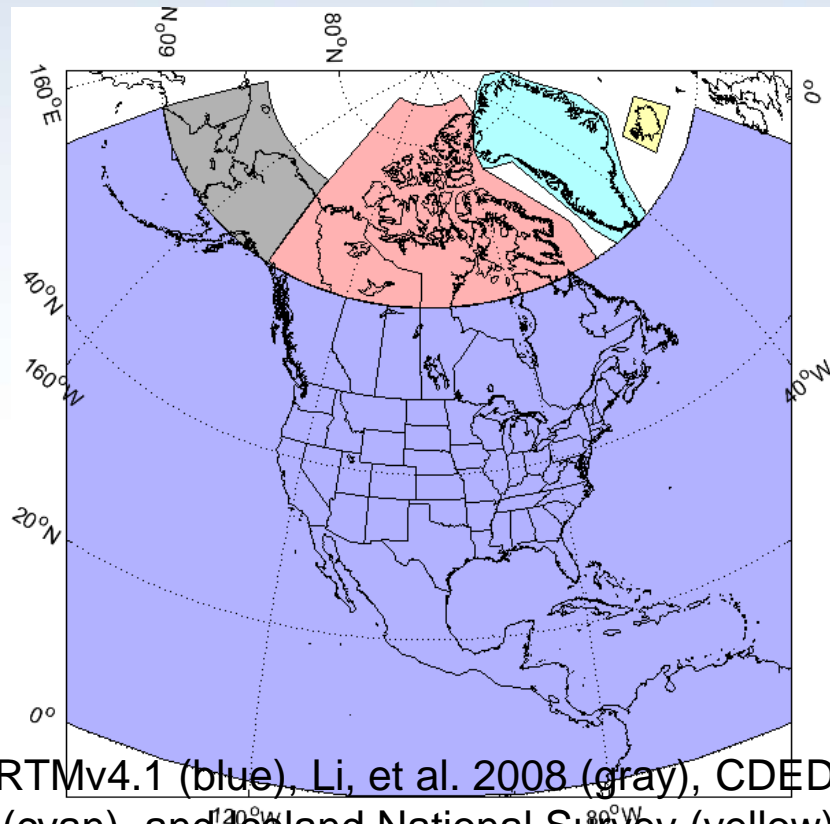
# Common Datasets: Terrestrial Gravity

- Each group provide data over their territory
- v1 Completed
- v2 to include supplemental areas (Iceland, South America, Greenland, etc.)
- INEGI: Central & South America
- CGS: Greenland
- NGS: Carribbean



# Common Datasets: DEM

- 3" elevation grid
- Mainly consists of SRTMv4.1 (below 60° N).
- Supplemental grids in other areas
- v1 completed
- v2 completed over the next year to include data over Alaska, Greenland, etc.



DEM Sources - SRTMv4.1 (blue), Li, et al. 2008 (gray), CDED (red), GIMP (cyan), and Iceland National Survey (yellow)





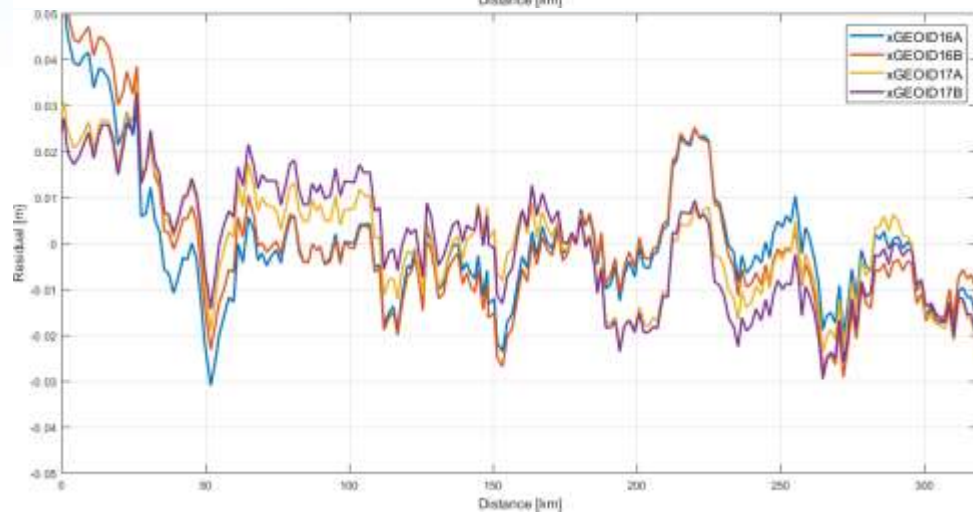
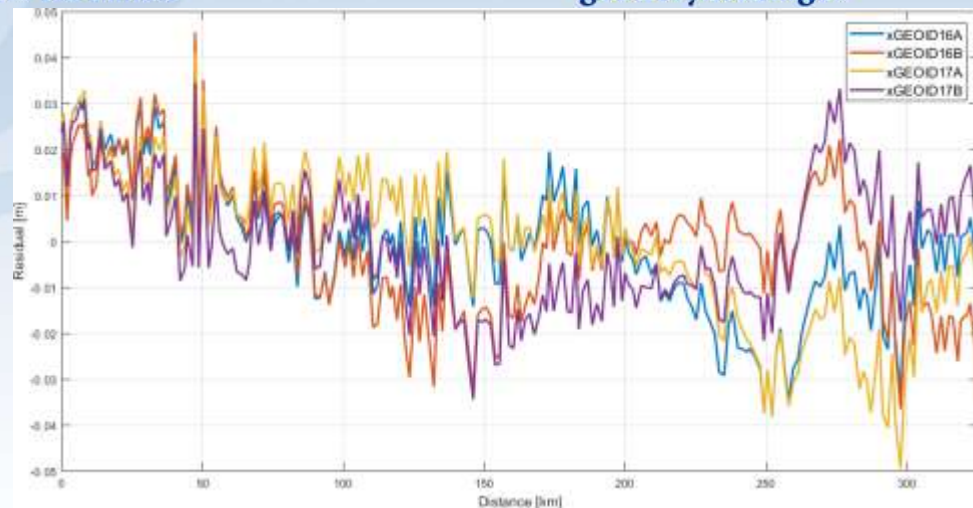
# Common Datasets: Other Groups

- Invitation to Contribute – through ~2020
  - Central America, South America, Caribbean Islands, W. Africa, Canary Islands, Samoa, Greenland, Iceland.
- Greenland (DTU) – gravity data
- Iceland - Landmælingar Íslands – DEM/gravity data

# Is it working?

GSVS11 – Texas [meters]	Minimum	Maximum	RMS
xGEOID16A	-0.0381	0.0428	0.015
xGEOID16B	-0.0365	0.0455	<b>0.015</b>
xGEOID17A	-0.0494	0.0409	0.017
xGEOID17B	-0.0344	0.0345	<b>0.014</b>

GSVS14 – Iowa [meters]	Minimum	Maximum	RMS
xGEOID16A	-0.031	0.053	0.015
xGEOID16B	-0.029	0.058	<b>0.017</b>
xGEOID17A	-0.025	0.035	0.013
xGEOID17B	-0.030	0.033	<b>0.014</b>



# Contact Us:

Kevin M. Ahlgren, Ph.D.  
NGS Geoid Team

[kevin.ahlgren@noaa.gov](mailto:kevin.ahlgren@noaa.gov)

240-533-9894

# International Cooperation & Collaboration