



FIG Working Week 2012

Rome, Italy 6–10 May

Knowing to:

Manage the territory
Protect the environment
Evaluate the cultural heritage



Federal
Public Service
FINANCE

General Administration of the
Patrimonial Documentation



Analysis of International and National Boundary Settlement and Demarcation Issues

Delphine Maréchal

Platinum sponsors:



FIG Working Week 2012

Rome, Italy 6–10 May

Knowing to:

Manage the territory
Protect the environment
Evaluate the cultural heritage



1. Introduction
2. Belgian State Boundaries Management by GAPD
3. Boundary commissions
4. Project : State Boundaries of Europe (SBE)
5. Conclusion

Platinum sponsors:





FIG Working Week 2012

Rome, Italy 6–10 May

Knowing to: Manage the territory
Protect the environment
Evaluate the cultural heritage



1.

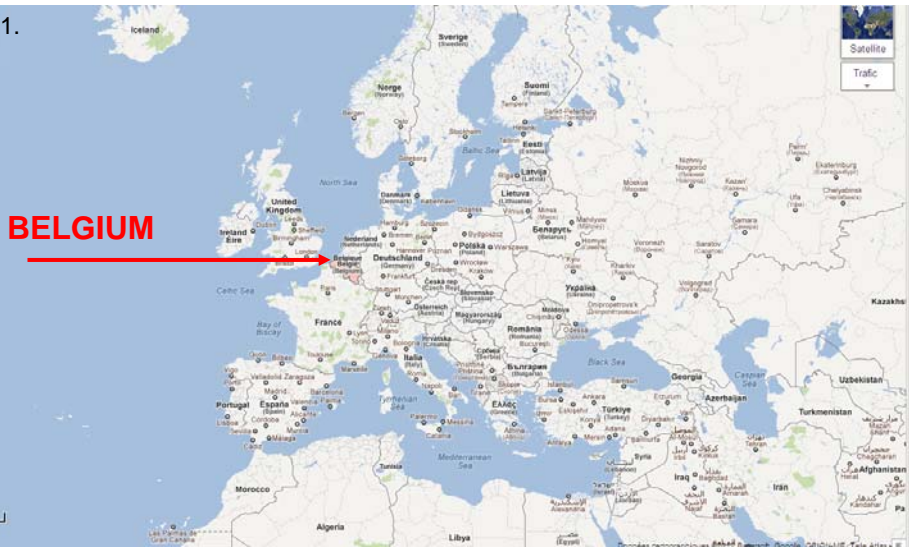


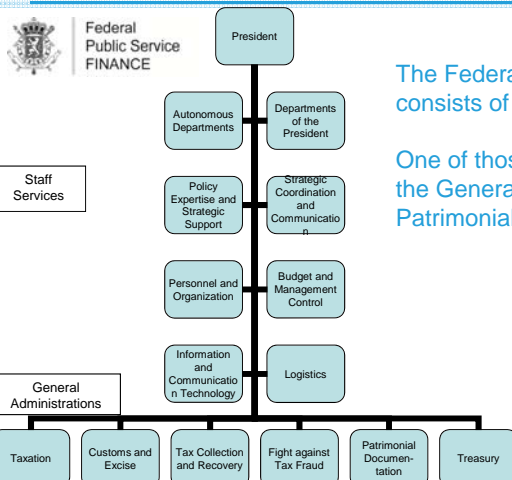
FIG Working Week 2012

Rome, Italy 6–10 May

Knowing to: Manage the territory
Protect the environment
Evaluate the cultural heritage



The General Administration of the Patrimonial Documentation (GAPD)



The Federal Public Service Finance consists of 6 general administrations.

One of those general administrations is the General Administration of the Patrimonial Documentation.





FIG Working Week 2012

Rome, Italy 6–10 May

Knowing to: Manage the territory
Protect the environment
Evaluate the cultural heritage



The General Administration of the Patrimonial Documentation (GAPD)

The main assignments of the Patrimonial Documentation are:

- the construction of the patrimonial documentation;
- the distribution of patrimonial information;
- the provision of services based on the patrimonial documentation

General Administration of the Patrimonial Documentation



FIG Working Week 2012

Rome, Italy 6–10 May

Knowing to: Manage the territory
Protect the environment
Evaluate the cultural heritage



The General Administration of the Patrimonial Documentation (GAPD)

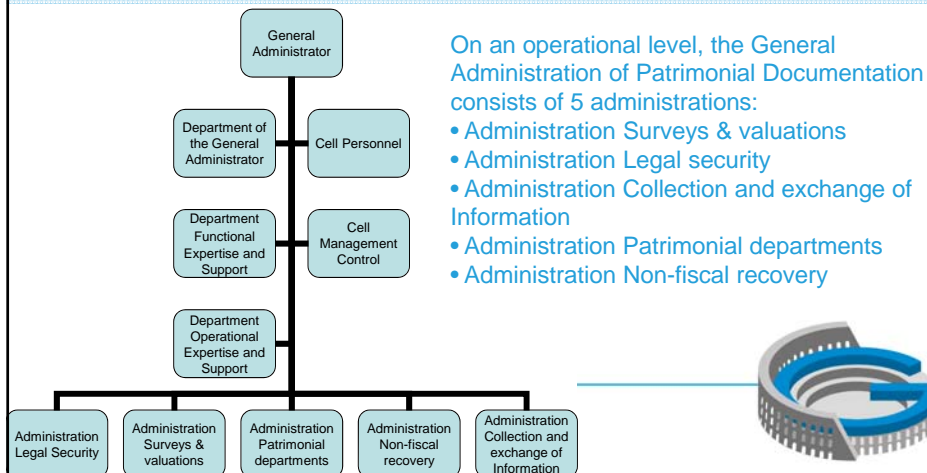




FIG Working Week 2012

Rome, Italy 6–10 May

Knowing to:

Manage the territory
Protect the environment
Evaluate the cultural heritage



The « Boundary » notion

Terminus was the god who protected boundary markers; his name was the Latin word for such a marker. Sacrifices were performed to sanctify each boundary stone, and landowners celebrated a festival called the "Terminalia" in Terminus' honor each year on February 23.

Terminus is often pictured as a bust on a boundary stone



(Wikipedia, 2012)

Platinum sponsors:



FIG Working Week 2012

Rome, Italy 6–10 May

Knowing to:

Manage the territory
Protect the environment
Evaluate the cultural heritage



2. Belgian State Boundaries Management by GAPD

Several successive steps:

- A reference documents research at the Ministry of Foreign Affairs and at the National Archives of Belgium (More than 3000 documents scanned)
- Several teams carried out a field inspection and a statement of the description of the boundary marks;
- Now, we are studying the documents and we are trying to determinate with our neighbours the exact position of the boundary by comparing the boundary position between reference documents and information collected on the field;
- Alphanumeric database (web application).

Platinum sponsors:





FIG Working Week 2012

Rome, Italy 6–10 May

Knowing to:

Manage the territory
Protect the environment
Evaluate the cultural heritage



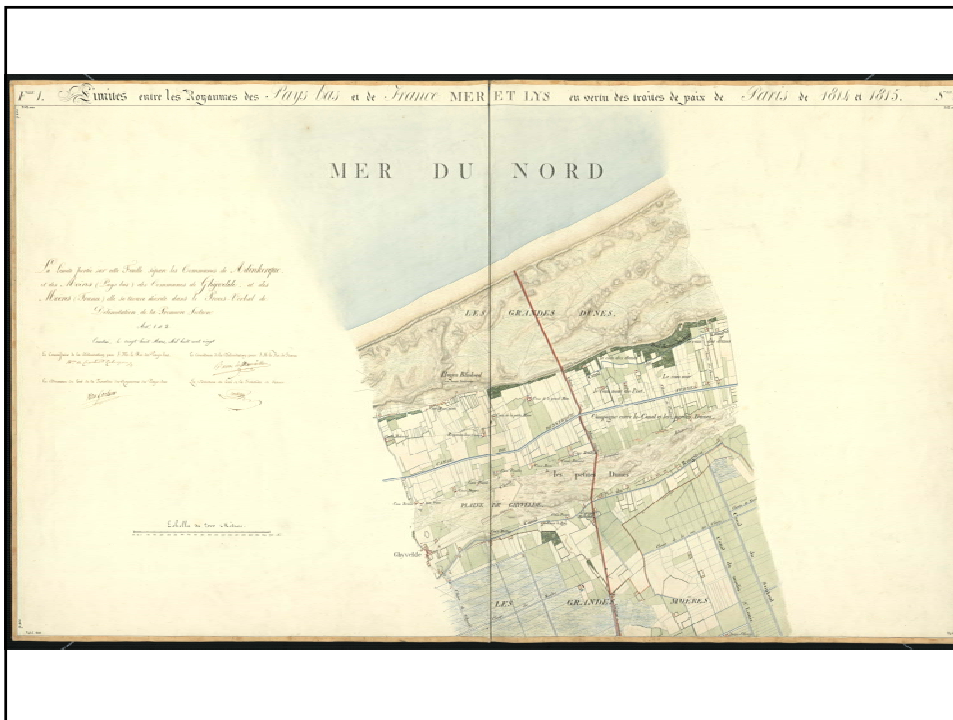
Belgian State Boundaries Management by GAPD

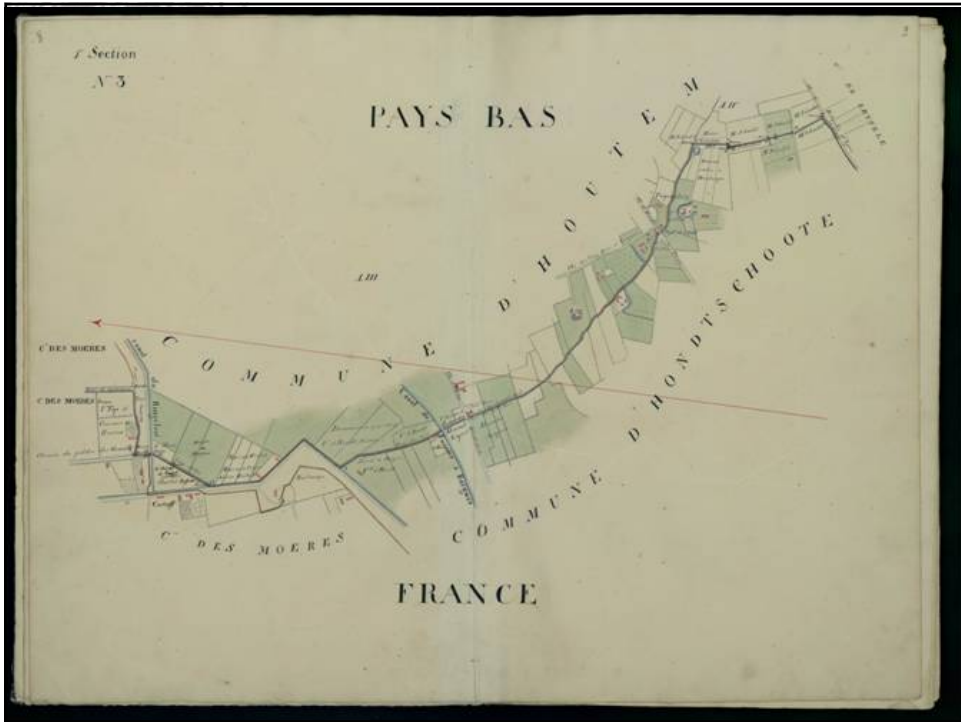
Main documents are:

- Original Treaty;
- Original PV and modifying PV;
- Sketches attached to the original Treaty;
- Cadastral Map;
- Photos;
- Coordinates;
- ...

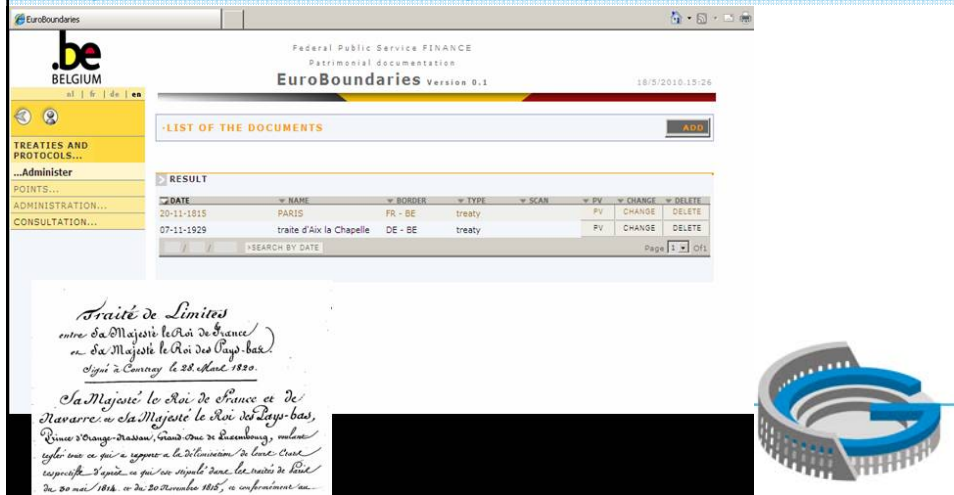


Platinum sponsors:





Belgian State Boundaries Management by GAPD : web application



EuroBoundaries Version 0.1 18/3/2010, 15:26

Federal Public Service FINANCE
 Patrimonial documentation


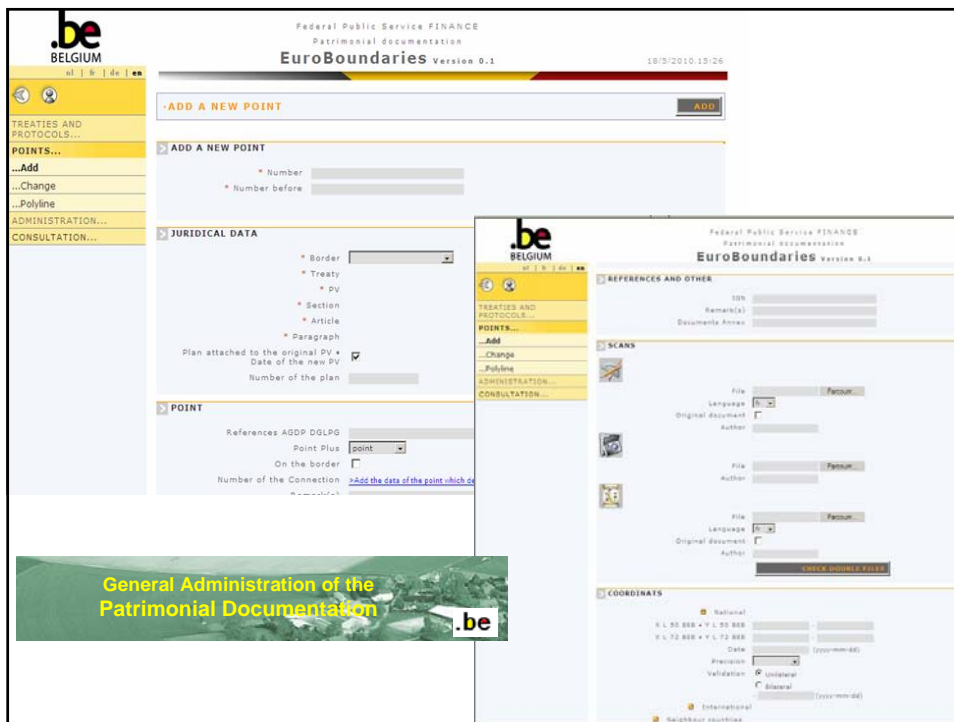
LIST OF THE DOCUMENTS [ADD]

DATE	NAME	BORDER	TYPE	SCAN	PV	CHANGE	DELETE
20-11-1815	PARIS	FR - BE	treaty		PV	CHANGE	DELETE
07-11-1929	traite d'Aix la Chapelle	DE - BE	treaty		PV	CHANGE	DELETE

SEARCH BY DATE Page 1 of 1 Off

Traité de Limites entre Sa Majesté le Roi de France et Sa Majesté le Roi des Pays-Bas, signé à Conrwy le 28 Août 1820.

Sa Majesté le Roi de France et de Navarre et Sa Majesté le Roi des Pays-Bas, Rois d'Orange-Nassau, Grand-Duc de Luxembourg, etc., se sont convenus de régler tout ce qui a rapport à la détermination de leur limite respectuelle d'après ce qui est stipulé dans le traité de Paris du 20 mai 1814, et du 20 novembre 1818, et en particulier ce...

EuroBoundaries Version 0.1 18/3/2010, 15:26

Federal Public Service FINANCE
 Patrimonial documentation

ADD A NEW POINT [ADD]

ADD A NEW POINT

* Number
 * Number before

JURIDICAL DATA

* Border
 * Treaty
 * PV
 * Section
 * Article
 * Paragraph

Plan attached to the original PV
 Date of the new PV
 Number of the plan

POINT

References ADP DOLPO
 Point Plus
 On the border
 Number of the Connection

REFERENCES AND OTHER

Remarks
 Document(s) Annex

SCANS


File Language
 Original document
 Author

File Language
 Original document
 Author

COORDINATES

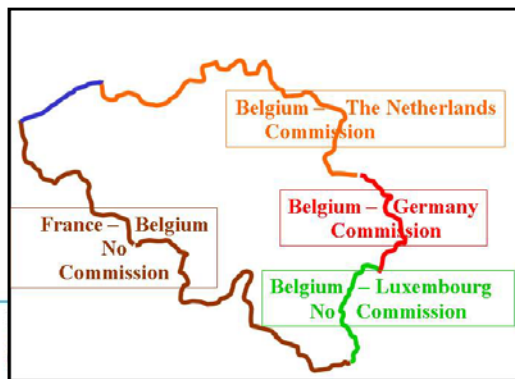
National
 X: L 50 888 * Y: L 50 888
 Y: L 50 888 * X: L 50 888
 Date
 Precision
 Validation
 International
 Neighbour countries

General Administration of the Patrimonial Documentation



3. Boundary Commissions

Belgium benefits of permanent Boundary Commissions only for two of its four bordering countries:



- between Belgium and The Netherlands
- between Belgium and Germany



Boundary Commissions : Main tasks

- To ensure the conformity of the position of existing boundary stones with treaty and PV's previously signed by the parties;
 - To draw up geographic position of all boundary marks;
 - To ensure at regular interval the good state of boundary stones;
 - To place new boundary stones in conformity with reference documents when old ones have disappeared or have been displaced;
 - To replace or to repaint damaged boundary stones;
 - To set up technical groups responsible for the field works;
 - To control and approve the planning and results of the field work;
 - To communicate about changes and tasks at the boundary line;
 - To prepare new treaties when necessary.
- The boundary commission is not entitled to change the boundary line.



FIG Working Week 2012

Rome, Italy 6–10 May

Knowing to: Manage the territory
Protect the environment
Evaluate the cultural heritage



4.

eurogeographics

Project : State Boundaries of Europe (SBE)

- State Boundaries of Europe (SBE) goal is to compile a multipurpose State Boundaries of Europe Dataset, meant to be the “definitive” description of all European state boundaries.
- The State Boundaries of Europe project aims at providing and maintaining:
 - The administrative and legal definition of State Boundaries, based on boundary Treaties,
 - Their precise geometric description expressed in ETRS89 coordinates of boundary points, marks and lines.

Platinum sponsors:



FIG Working Week 2012

Rome, Italy 6–10 May

Knowing to: Manage the territory
Protect the environment
Evaluate the cultural heritage



eurogeographics

Project : State Boundaries of Europe (SBE)

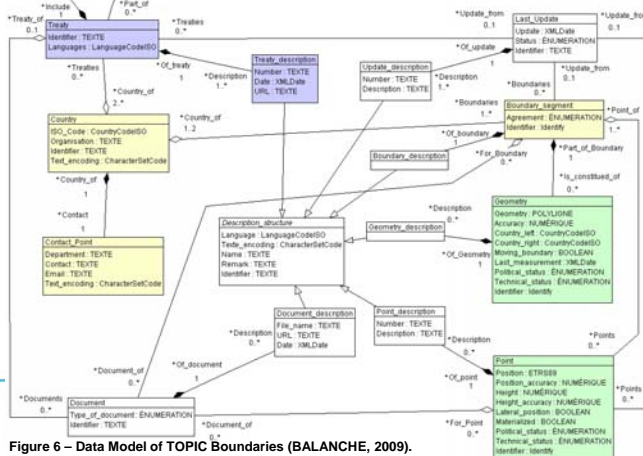


Figure 6 – Data Model of TOPIC Boundaries (BALANCHE, 2009).

The conceptual model of SBE has been developed by swisstopo





FIG Working Week 2012

Rome, Italy 6–10 May

Knowing to:

Manage the territory
Protect the environment
Evaluate the cultural heritage



eurogeographics

Project : State Boundaries of Europe (SBE)

- The collection of high precision data → Time
- Intermediate solution : most accurate boundary representation based on large-scale national dataset (topographic or cadastre).
- The boundaries will be stored in 3 different levels of detail and compiled in a common INSPIRE compliant database.
 - First level (original SBE database): the legal definition of state boundaries with precise geometric description expressed in ETRS89 coordinates as described in official boundary treaties.
 - Second level (database in development): state boundaries as included in national topographic master databases in large scale.
 - Third level (common database of edge-matched state boundaries in medium scale): generalised boundaries in medium scale for use on regional level based on EuroGeographics existing products.



FIG Working Week 2012

Rome, Italy 6–10 May

Knowing to:

Manage the territory
Protect the environment
Evaluate the cultural heritage



5. Conclusion

Thank you for your attention

Platinum sponsors:

