

# The General Administration of the Patrimonial Documentation of Belgium Turned Towards The Future (2782)



Integrating the Generations  
FIG Working Week 2008  
Stockholm, Sweden, 14–19 June 2008



Professor Francis GABELE  
Marc VANDERSCHUEREN



## THE KINGDOM OF BELGIUM



Federal State

3 Regions

3 Communities

10 Provinces

589 Communes



Integrating the Generations  
FIG Working Week 2008  
Stockholm, Sweden, 14–19 June 2008



Professor Francis GABELE  
Marc VANDERSCHUEREN



**TS 6A – Good Governance in Land Administration**

The General Administration of the Patrimonial Documentation of Belgium  
Turned Towards The Future (2782)

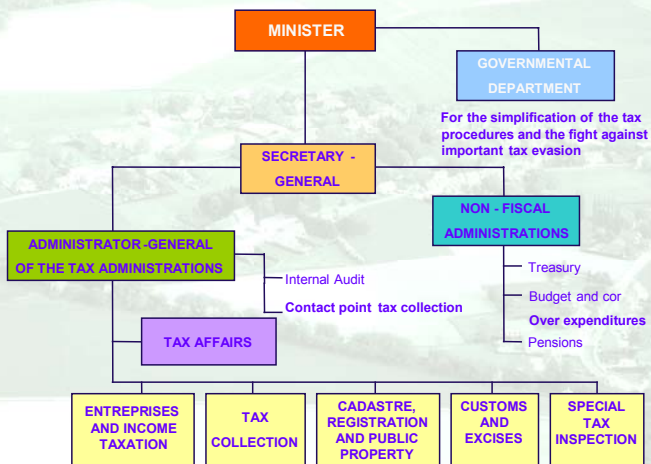
- Population: 10,396,421 inhabitants (2003)
- Population density: 339 inhabitants / km<sup>2</sup>
- Head of State: King Albert II
- National Day: 21 July
- Currency: Euro (EUR)
- National product: 283.7 billions of EUR (2004)
- Annual growth rate: 2,7 % (2004)
- Time zone: GMT + 1 hour, summer time: GMT + 2 hour
- Maximum distance between two points: 280 kms
- Peak: Signal de Botrange (694 m)
- Average temperature: 9,8° Celsius
- Precipitation: 780 mm (annual average)
- Sunshine: 1,555 hours (annual average)

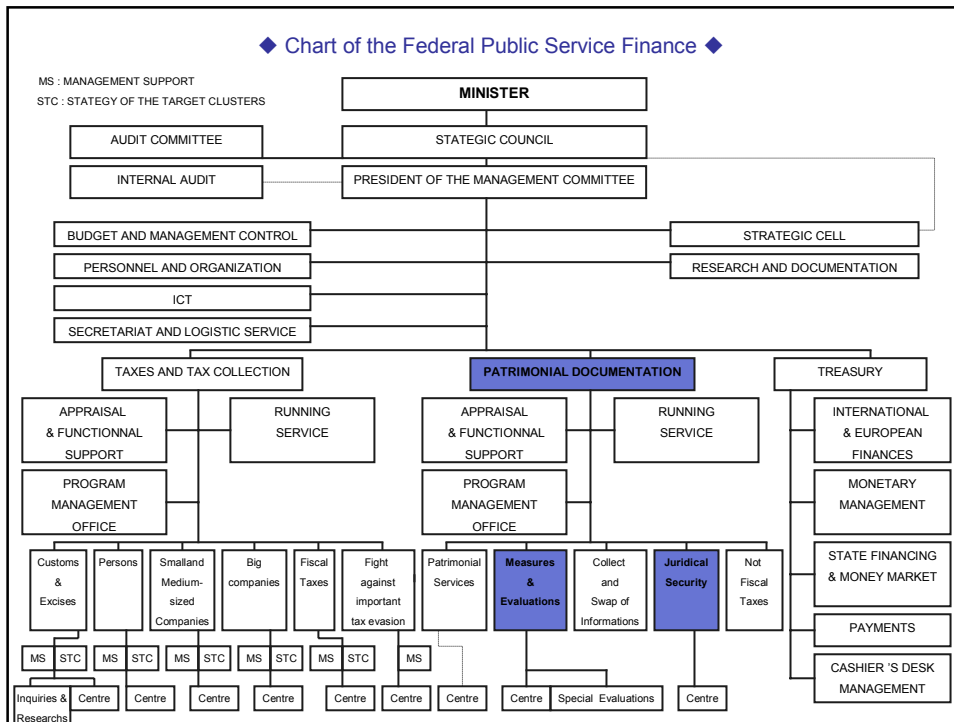


**TS 6A – Good Governance in Land Administration**

The General Administration of the Patrimonial Documentation of Belgium  
Turned Towards The Future (2782)

◆ **Chart of the Ministry of Finance** ◆





**TS 6A – Good Governance in Land Administration**  
The General Administration of the Patrimonial Documentation of Belgium  
Turned Towards The Future (2782)

**The Integrated Data Processing  
of the « Patrimonial Documentation »  
Administration of Belgium (STIPAD)**

**Program objective:**

- To manage in a rational and regular way the portfolio of projects having the same objective:
 

**« Integrated system of the Patrimonial Documentation »**

- ➔ **Modification of working methods;**
- ➔ **Modification of the computer infrastructure;**
- ➔ **Organisational reorganisation in order to match with the technical and business evolution.**

**Federal Public Service FINANCE**     Integrating the Generations  
 FIG Working Week 2008  
 Stockholm, Sweden, 14–19 June 2008         Professor Francis GABELE  
 Marc VANDERSCHUEREN

## Implementation of STIPAD

### Objective

**STIPAD** has the ambition to provide to the numerous potential users, as well public as private, the movable and real estate data, but also data about the value of the patrimony of all natural persons and legal entities according to agreed authorizations and with ensured protection of privacy.

## Implementation of STIPAD

### Present situation - Weaknesses

- Different information processing systems
- Different data storage systems
- Incompatible information systems – independent sites
- Different level of computerisation (computerised and non-computerised information)
- Manual information interchange
- Inconsistency and non-reliability of data

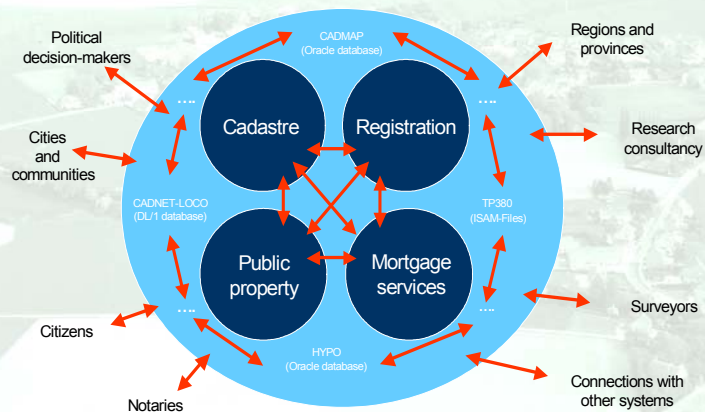
## Implementation of STIPAD

### Present situation – Weaknesses (2)

- Redundant data
- Various updates
- Non-updated data
- Difficulties to meet the needs of the expanding amount of users (research and communication of information)
- Important response time (numerous data media)

## Implementation of STIPAD

### Present situation



## Implementation of STIPAD

### Objectives of STIPAD

- Computerise process and documentation
  - to process and distribute data computerised;
  - to permit quick and easy consultations which are connected to a completeness of information.
- Interactive collaboration with the external partners
- To respond to the evolution and needs of those partners

## Implementation of STIPAD

### Objectives of STIPAD

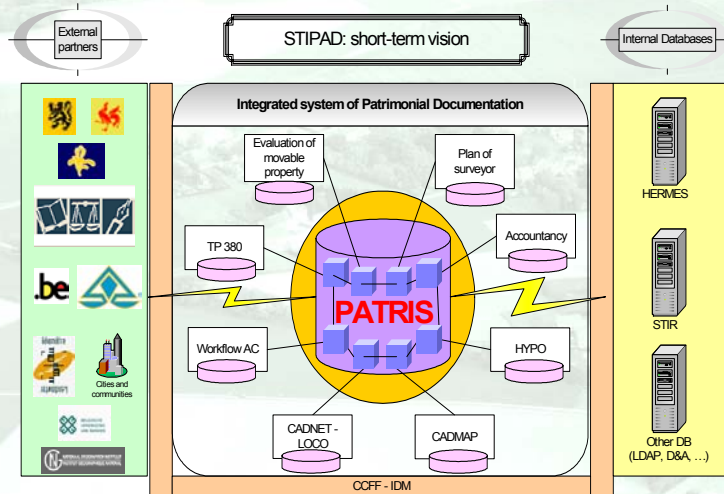
- To adapt and to evolve according to the new social, economic and environmental elements
- To improve service delivery
  - to reduce deadlines;
  - to improve juridical security;
  - to improve accessibility and availability of information;
  - to guarantee confidentiality of information.

## Implementation of STIPAD

### Functional objectives of STIPAD

- To implement **COPERFIN** process established due to the BPR (Business Process Reengineering)
  - to collect taxes
  - to acquire, manage and transfer goods
  - to evaluate goods
  - to write and draw up an authentic deed
  - to update the patrimonial documentation
  - to deliver patrimonial information
  - to handle discrepancies
  - process «Non-fiscal taxes»

## Implementation of STIPAD



## Implementation of STIPAD

### PATRIS: objectives

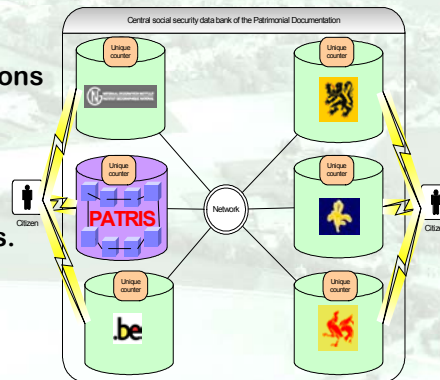
- The central element of STIPAD is the patrimonial database, called PATRIS (**PAT**rimony **I**nformation **S**ystem).
- The principal objectives are:
  - to collect, to manage, to update and to communicate all the information related to a natural person or legal entity (active and passive);
  - to ensure the juridical security of data.

## Implementation of STIPAD

### Other concept

- **Central social security data bank of the Patrimonial Documentation**

- To create connections with other existing databases concerning the same areas, managed by other management levels.





## Around PATRIS: 7 GENERIC PROCESSES

1. Process 10: to ask duties;
2. Process 11: to purchase, to manage and to alienate immovables;
3. Process 12: to value im(movables);
4. Process 13: to draw up and to come up deed;
5. Process 14: to retain and to update the data of the Patrimonial Documentation included the cadastral map of parcels;
6. Process 15: to deliver patrimonial data;
7. Process 16: to settle the disagreements.

## The thought processes of the Integrated Data Processing have been developed around new concepts within the framework of e-Governance

- The only file;
  - Single counter;
  - Risk Management;
  - Authentic source;
  - Unified formality;
  - Priority of the patrimonial mission;
  - Regulation;
  - UNIDENT;
  - Preliminary cadastration.
- > 3 phases





**PATRIMONIAL DOCUMENTATION**

**TS 6A – Good Governance in Land Administration**  
 The General Administration of the Patrimonial Documentation of Belgium  
 Turned Towards The Future (2782)

---

**The last concepts run to the graphic projects within the context of the integrated data system**

- Digitizing of the cadastral map of parcels
  - > CADMAP
  - > CADMAP Extension
  - > CADGIS


 Integrating the Generations  
 FIG Working Week 2008  
 Stockholm, Sweden, 14–19 June 2008
 
 Professor Francis GABELE  
 Marc VANDERSCHUEREN
 






**PATRIMONIAL DOCUMENTATION**

**TS 6A – Good Governance in Land Administration**  
 The General Administration of the Patrimonial Documentation of Belgium  
 Turned Towards The Future (2782)

---

**The changeover to digital maps offers numerous perspectives**

- Centralization of the geographic information;
- Provision of the cadastral maps to the municipalities;
- Creation of a continuous map;
- Creation of links between the data of the map and those of the land register;
- Implementation of STIPAD;
- Improvement of the quality of the maps;
- Creation of a large-scale national referential map;
- Creation of a referential map for the subsoil cadastre;
- Start of the Best Address project.


 Integrating the Generations  
 FIG Working Week 2008  
 Stockholm, Sweden, 14–19 June 2008
 
 Professor Francis GABELE  
 Marc VANDERSCHUEREN
 


**TS 6A – Good Governance in Land Administration**  
The General Administration of the Patrimonial Documentation of Belgium  
Turned Towards The Future (2782)

---

## Change Management Team



**TS 6A – Good Governance in Land Administration**  
The General Administration of the Patrimonial Documentation of Belgium  
Turned Towards The Future (2782)

---

## Conclusion

Richness of the data of the « Patrimonial  
Documentation » Administration

+

New IT Technologies

---

= A better juridical security

= A better accessibility of the patrimonial data