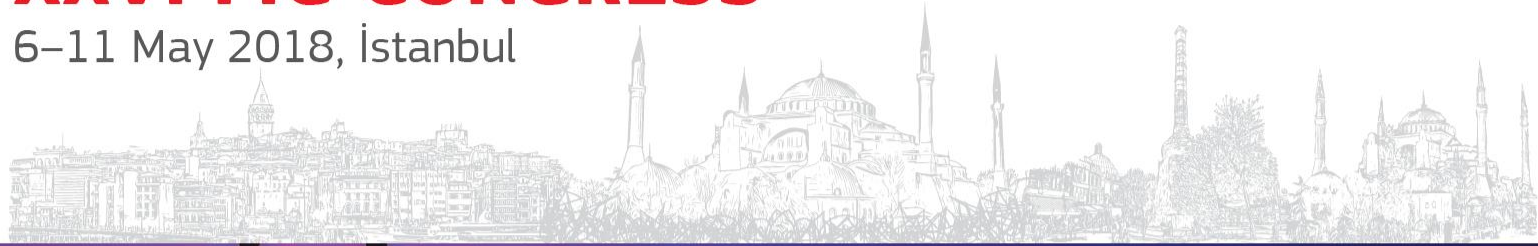




XXVI FIG CONGRESS

6–11 May 2018, İstanbul



EMBRACING OUR SMART WORLD WHERE THE CONTINENTS CONNECT:
ENHANCING THE GEOSPATIAL MATURITY OF SOCIETIES

Organized by



Main Supporters



Platinum Sponsors





EMBRACING OUR SMART WORLD WHERE THE CONTINENTS CONNECT:
ENHANCING THE GEOSPATIAL MATURITY OF SOCIETIES
6–11 May 2018, Istanbul

BIM – the opportunities and lessons learned

- Introduction – James Kavanagh
- BIM basics
- Geospatial at the heart of BIM
- BIM Economics
- BIM levels & lifecycle
- Gartner hype cycle – where does your country sit on the cycle?
- Survey4BIM
- The BIM challenge
- Open Standards
- Review

Organized by



Main Supporters



Platinum Sponsors



**BIM for Surveyors
Workshop**

BIM basics

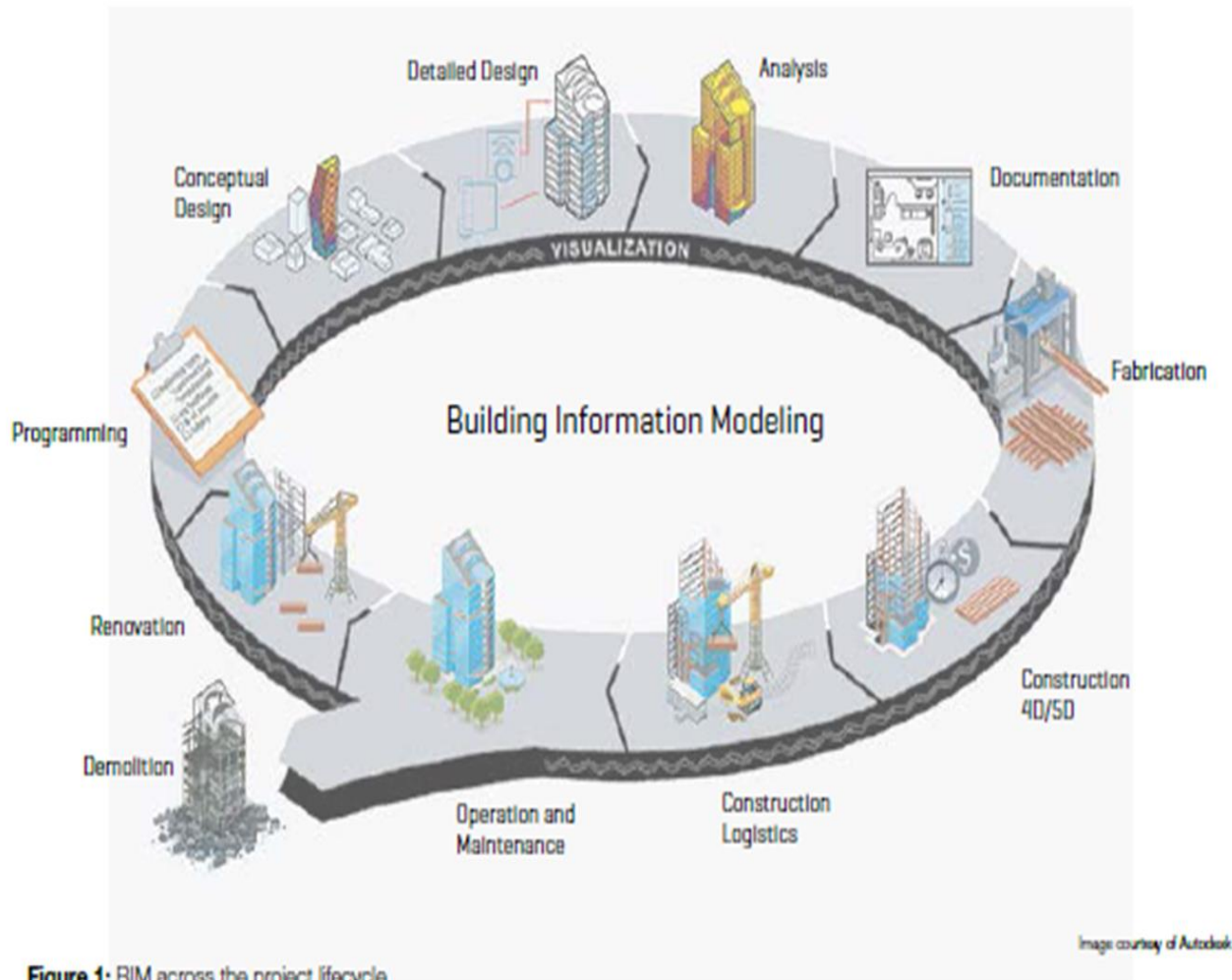
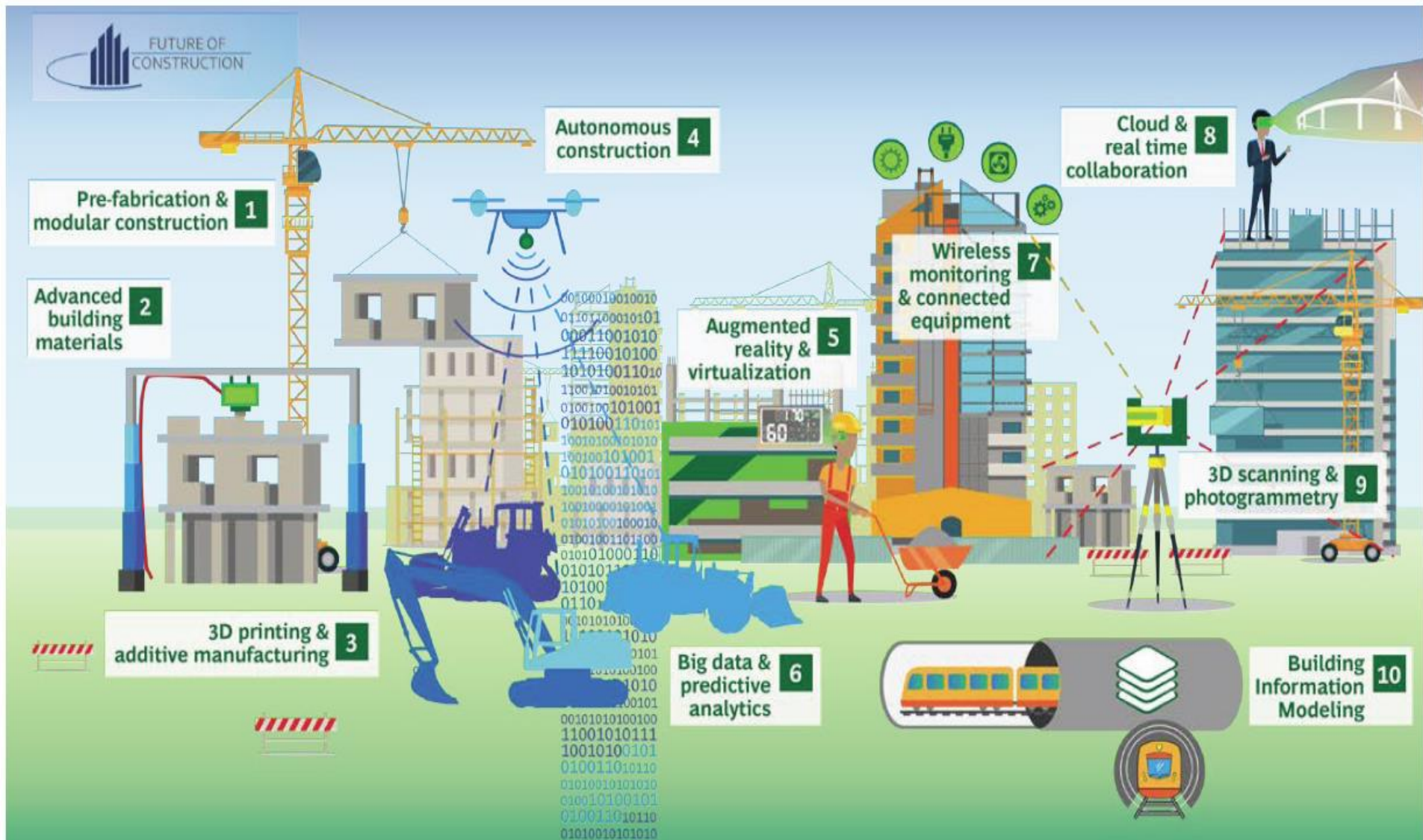


Figure 1: BIM across the project lifecycle

Geospatial at the heart of BIM



Geospatial at the heart of BIM

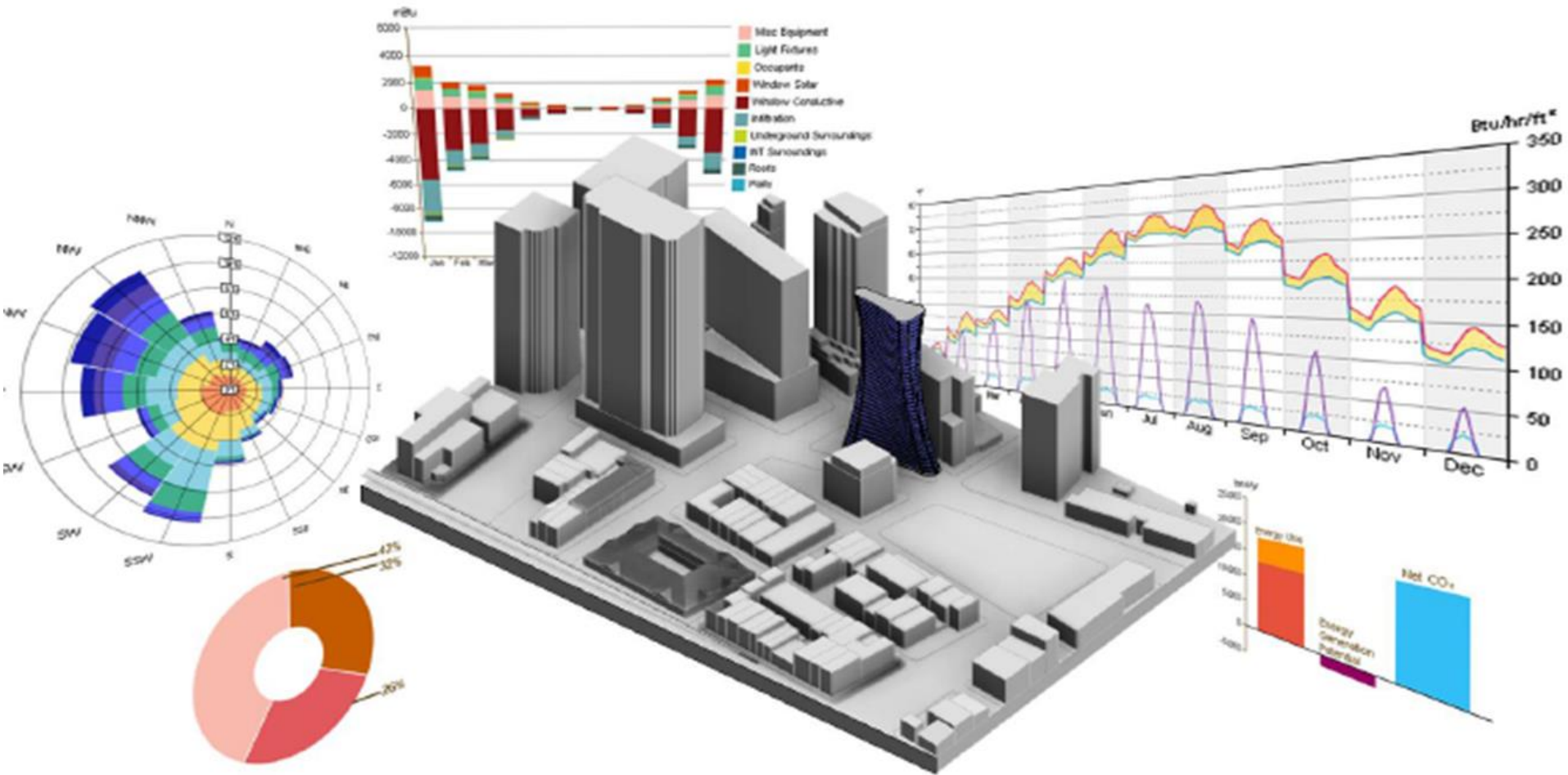
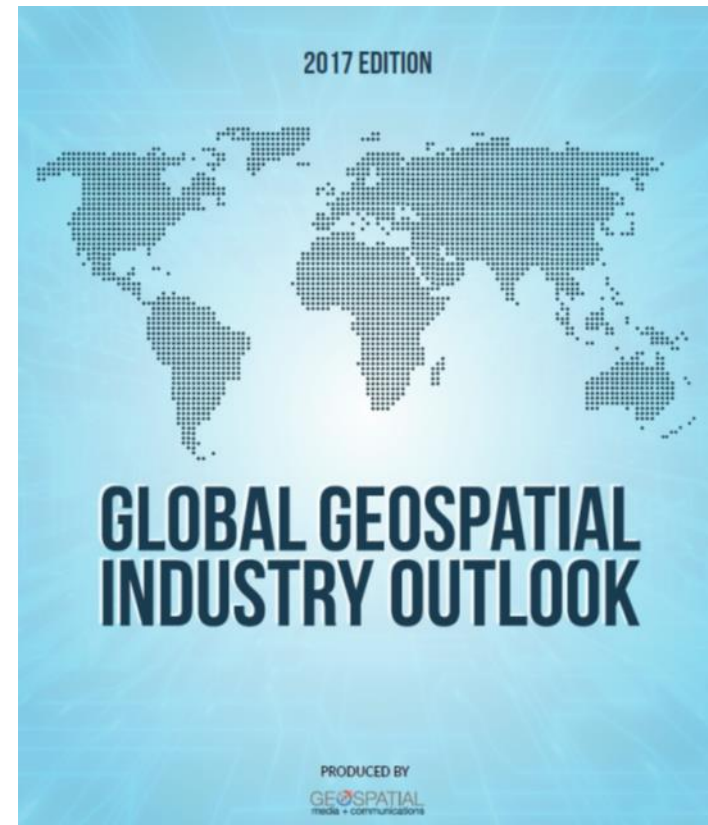


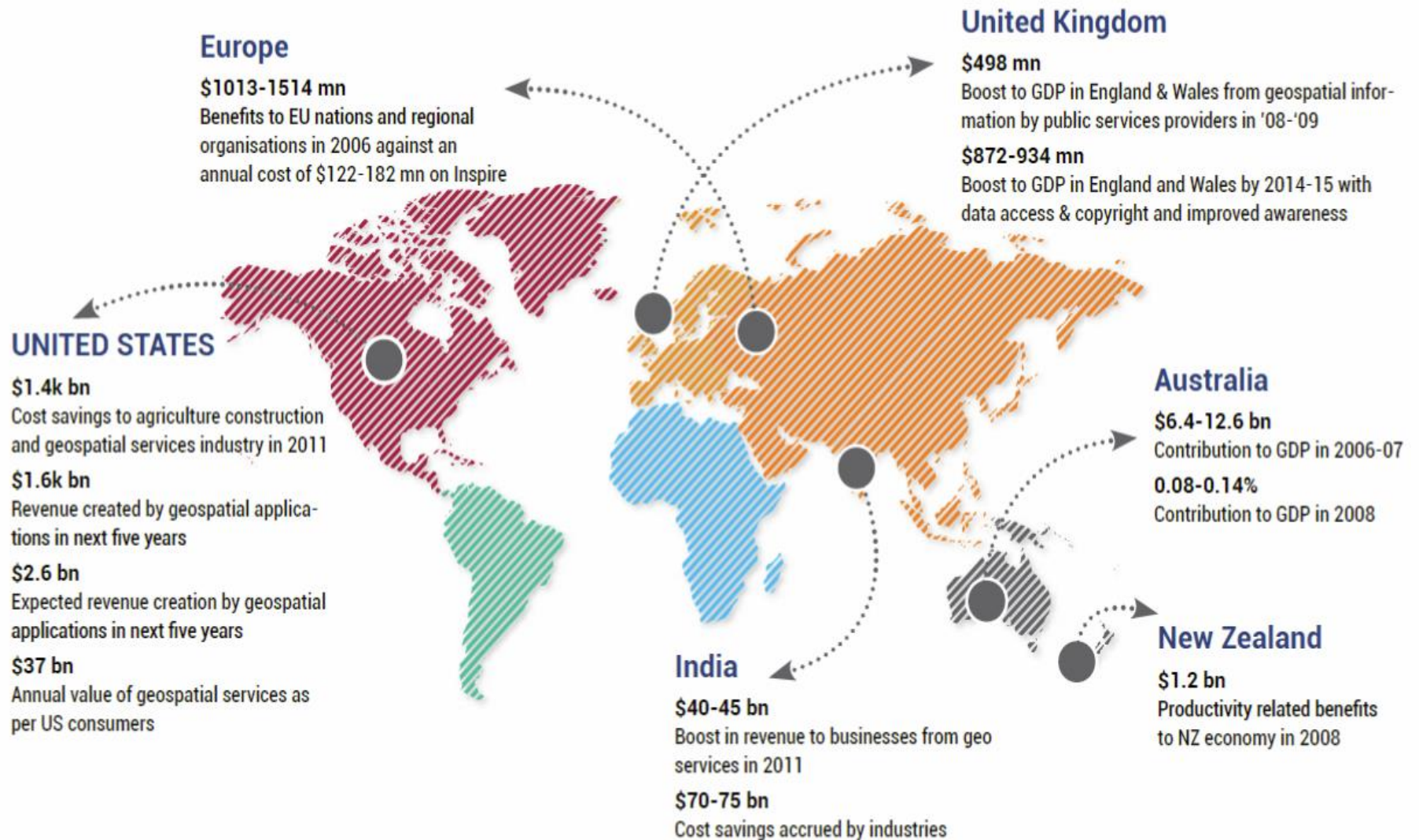
Figure 52: Concept Stage Modelling and Analysis at a District Level (Source: Autodesk)

Geo Economics

- The global GIS market \$14.62 billion by 2020 from \$7.61 billion in 2014, growing at 11.4%
- 3.6 billion GNSS devices were in use in 2014 and by 2019, this number is expected to reach 7 billion
- 3D scanner market is expected to grow from \$3.41 billion in 2015 to \$5.90 billion by 2022
- Global geospatial market is expected to grow from \$27.42 Billion in 2015 to \$72.21 Billion by 2020, 21.4% from 2015 to 2020



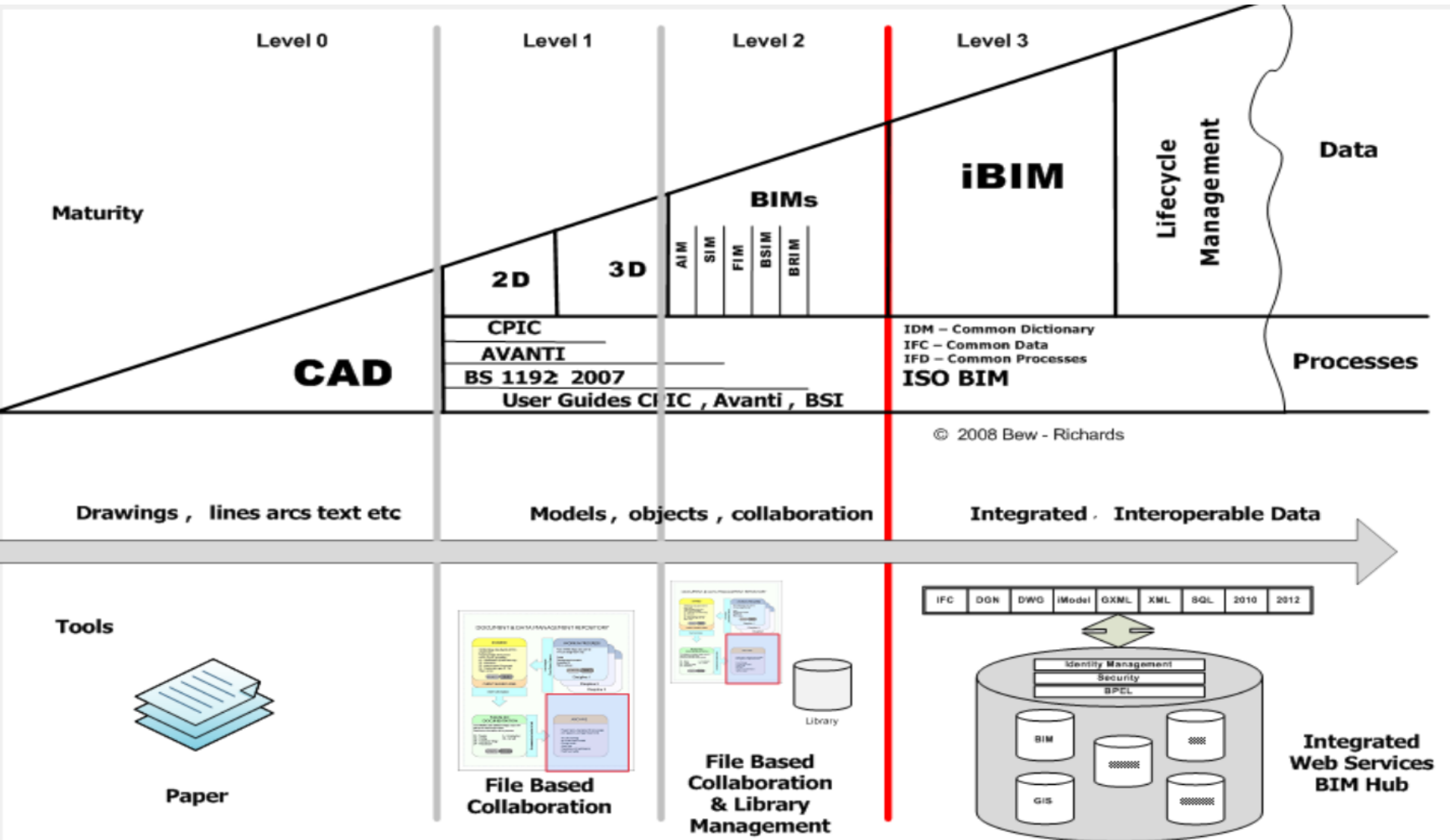
Geo Economics



BIM Economics

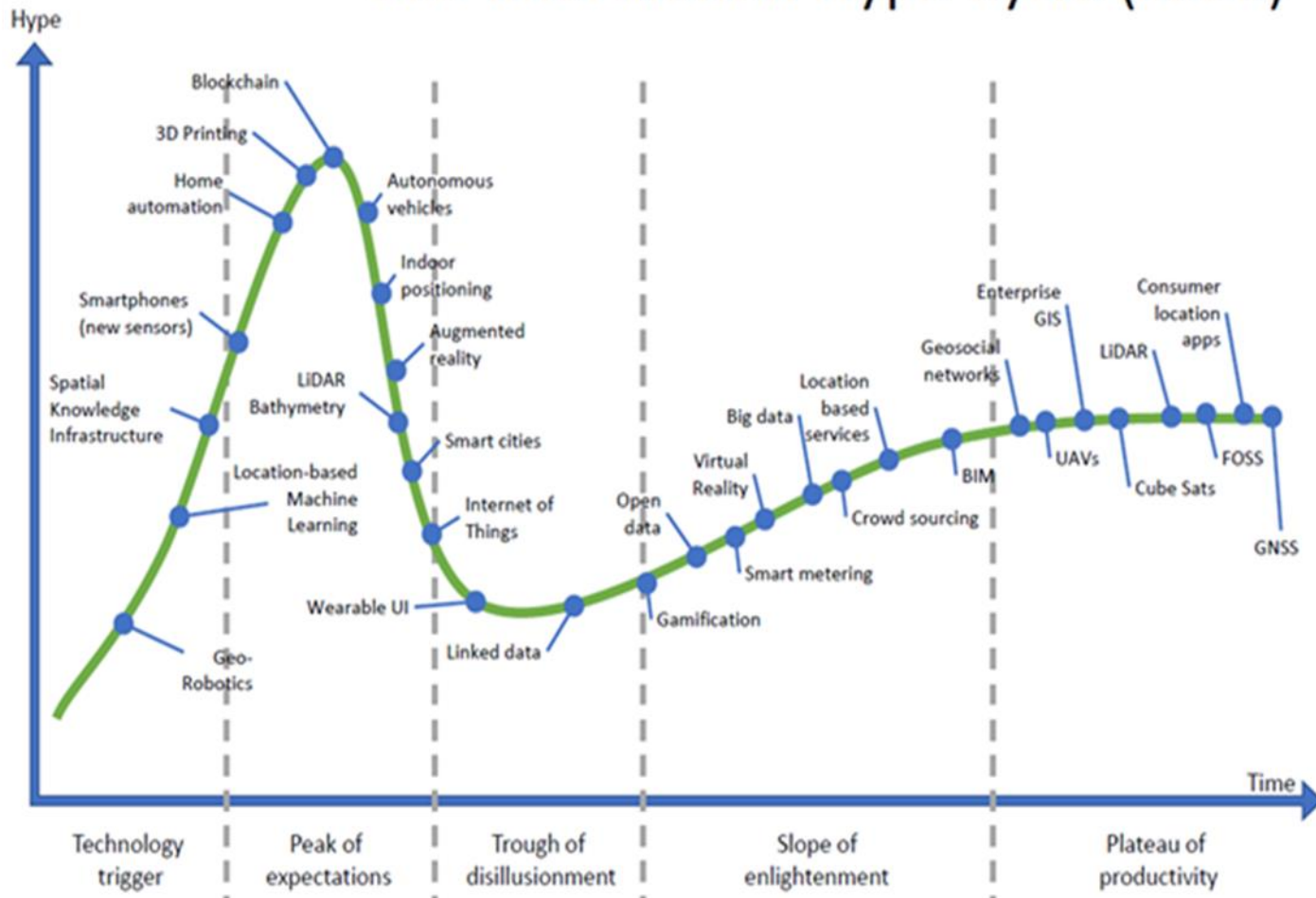


BIM levels & lifecycle

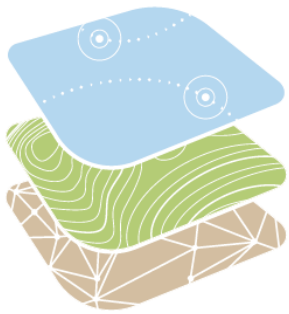


Gartner hype cycle

Geo-information Hype Cycle (2018)



ConsultingWhere, with acknowledgements to Gartner research



Survey4BIM

Building stronger, together

Challenges and Opportunities to Geo Enable BIM



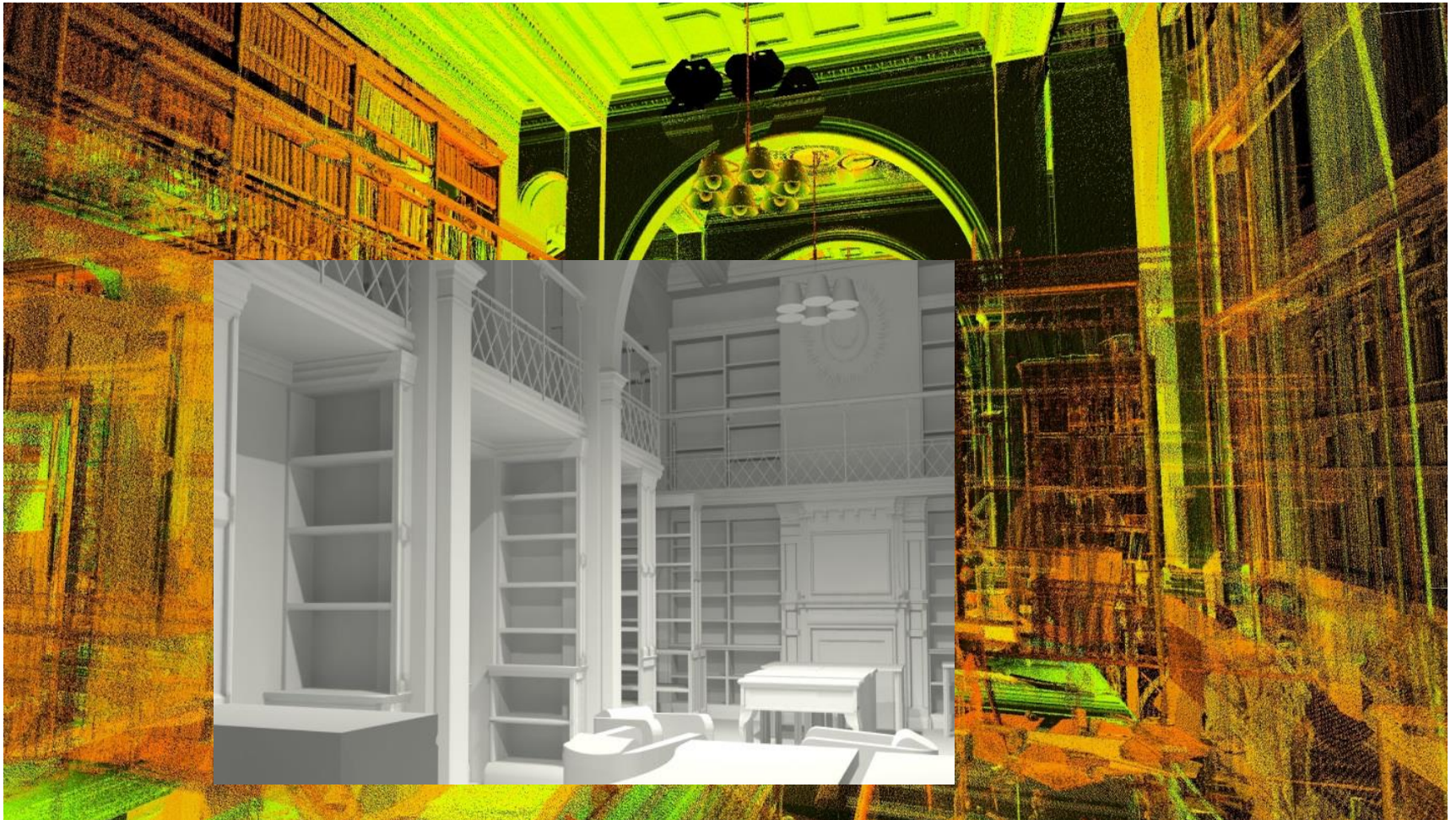
Industry Bodies Represented

Our Partners

Big5 Geospatial Challenges to Geo Enable BIM Level 2



The BIM challenge



BIM Standards

PAS 1192-5:2015

Specification for security-minded building information modelling, digital built environments and smart asset management

PAS 1192-3:2014

Specification for information management in the operational phase of assets using building information modelling



bsi.

Research



June 2015

Building Information Modelling and the Value Dimension

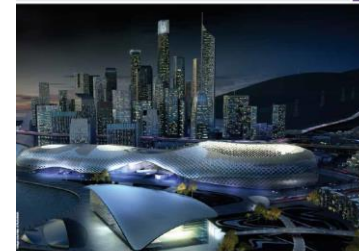


rics.org/research



AMITY UNIVERSITY

May 2014
State of BIM Adoption and Outlook in India



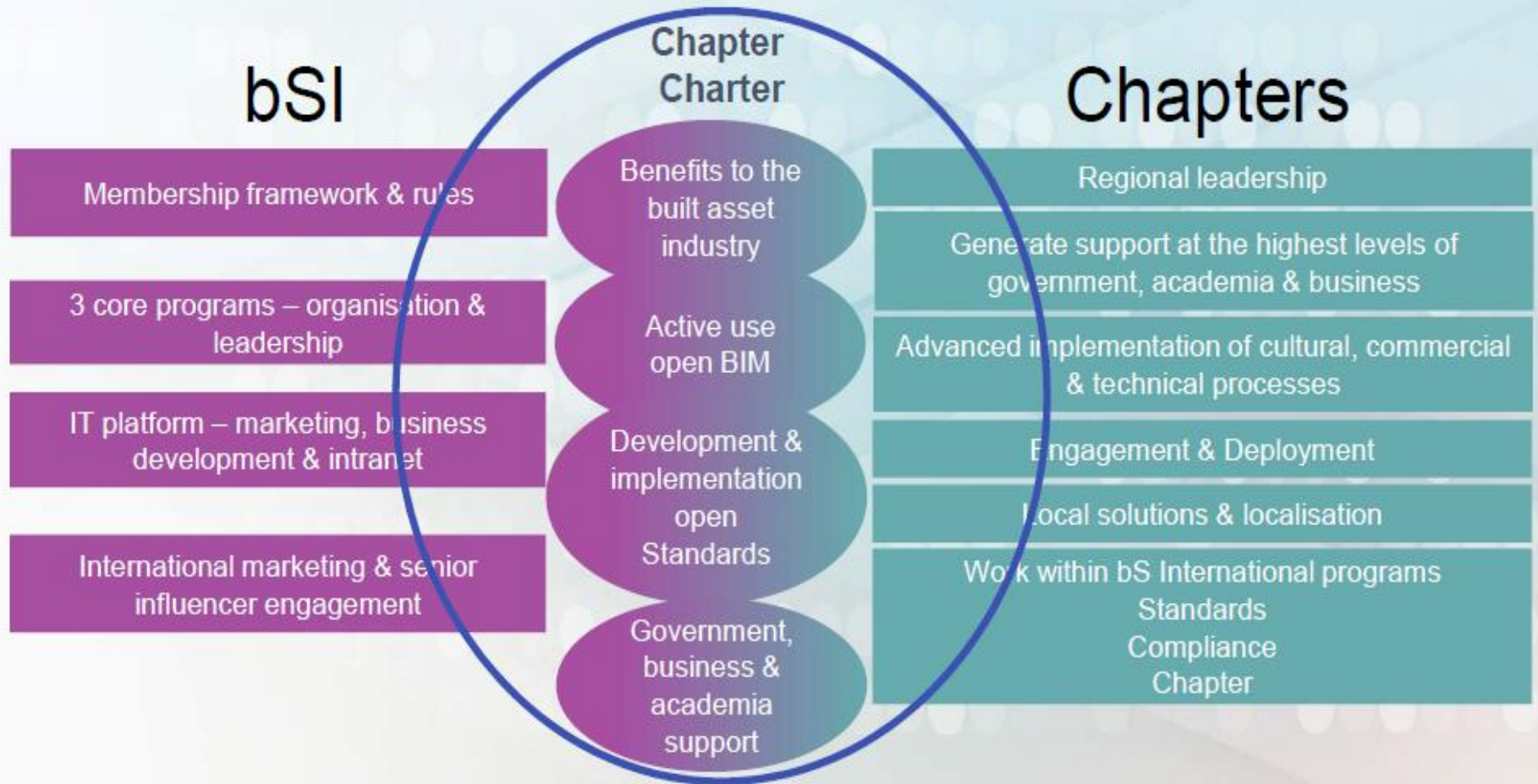
Research partner: KPMG
Research sponsor: AUTODESK
ricsbe.org

CPNI
Centre for the Protection of National Infrastructure

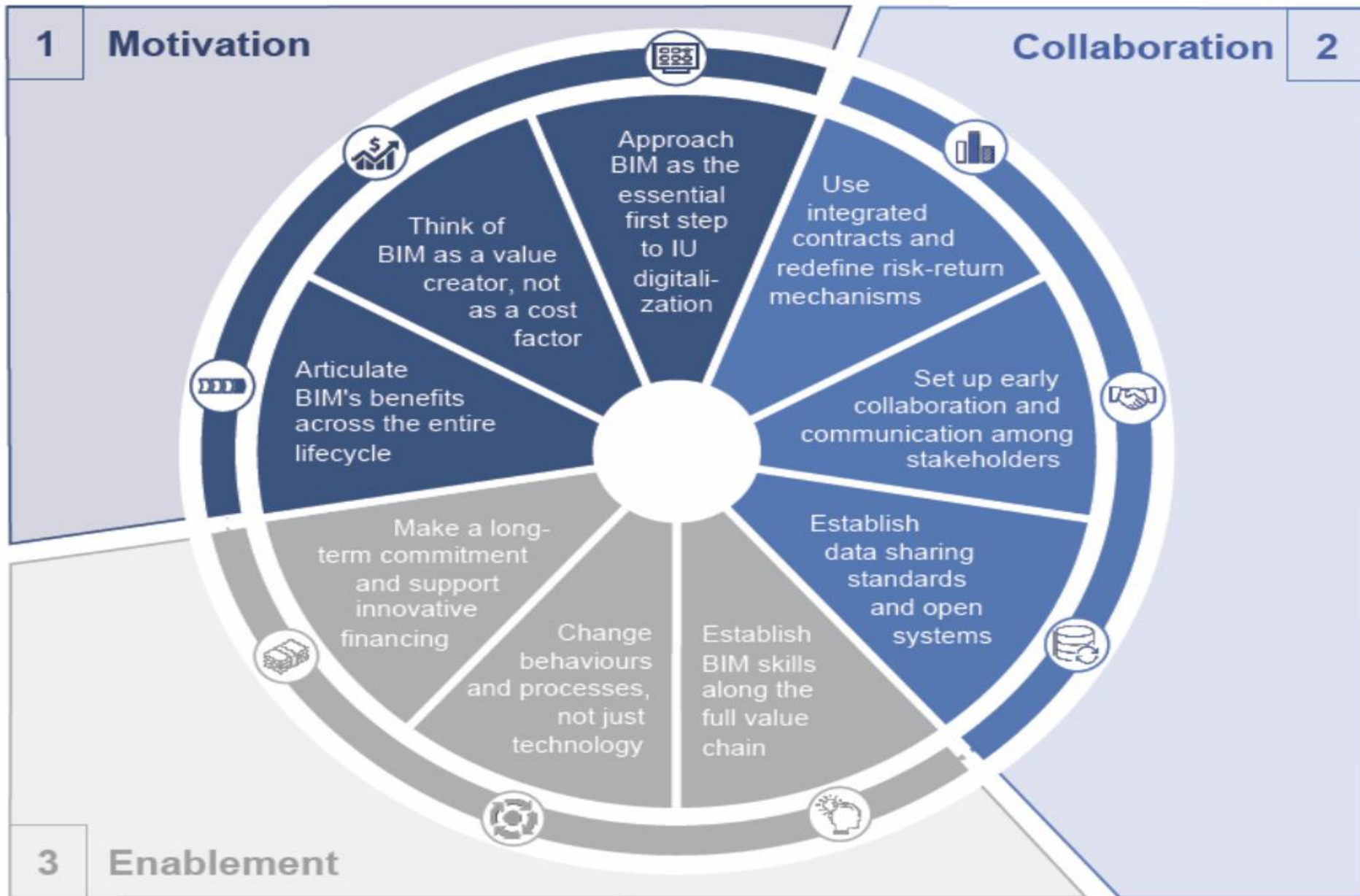
bsi.

rics.org/guidance

BIM Open Standards



Review



James Kavanagh MRICS C.Geog MCInstCES

Director Global Land & Resources

RICS 12 Great George Street, Parliament Square

Parliament Square, London SW1P 3AD

T: +44(0) 207 695 1598

Web: <http://www.rics.org/land>

Email: jkavanagh@rics.org

Linkedin: [uk.linkedin.com/pub/james-kavanagh/17/48b/654/](https://www.linkedin.com/pub/james-kavanagh/17/48b/654/)

<https://www.buildingsmart.org/>

Twitter – @jkavanagh99, #RICSland

