



SESSION #3:
THRIVING IN UNCERTAIN TIMES

FIG YSN OSM MAPPING ACTIVITIES –
HOW CAN YOU CONTRIBUTE
EVEN IF YOU'RE FAR AWAY?

FRANKA GRUBIŠIĆ

3RD FIG YSN CONFERENCE, CHRISTCHURCH, NEW ZEALAND

30 APRIL - 1 MAY 2016

DO YOU KNOW WHAT HAPPENS WITHIN ONE HOUR ON EARTH?

We each laugh 15 times.

Our hearts beat around 100 000 times.

An astronaut on the international space station sneezes 100 times.

Around 7200 earthquakes of all magnitudes happen.

**37 earthquakes with a magnitude higher than 4.2
happened on May 12th, 2015.**

17 of them where in Nepal.

7 of them within one hour.

Do you know how many earthquakes in average with
5.0 – 5.9 magnitude happen in an hour?

0,150570776

It's almost none.

There were **7** of them in Nepal.

Do you know how many earthquakes in average with
6.0 – 6.9 magnitude happen in an hour?

0,015296804

Close to zero.

There was **1** of them in Nepal.

Do you know how many earthquakes in average with
7.0 – 7.9 magnitude happen in an hour?

0,001712329

There isn't any.

There were **2** of them in Nepal.

WHAT DID WE DO IN AN HOUR ON MAY 19TH 2015?

Mapped 32 *km*²

Almost a half of Salzburg

More than half of the Manhattan

Almost whole Vatican city

3 Heathrow airports

Around 6000 football fields



How did we do it?

OpenStreetMap

50 surveyors from over 30 countries gathered on Tuesday, 19th of May, during the FIG Working Week in Sofia, the YSN Session #2 Mapping response – Contributions for Nepal working on 5 tasks.

#1047 - Nepal Earthquake, 2015, Palpa

#Task 35 | #Task 41 | #Task 42 | #Task 49 | #Task 48

#1047 Nepal Earthquake, 2015, Palpa (Additional effected district)

4 35%

- Author: **HOT & Kathmandu Living Labs Volunteers**
- Requesting organization: **Nepal and International Response community**
- Priority: **Urgent**
- Imagery: **Bing and MapBox**



The Nepal government and the international community are responding rapidly to this emergency. The international charter was activated and provide post-disaster imagery. For this response, we coordinate with the Nepal government, the International organizations and the DHnetwork.

Created by Nirab Pudasaini - Updated less than a minute ago - Priority: urgent

OSM Tasking Manager

About en login to OpenStreetMap

#1047 - Nepal Earthquake, 2015, Palpa (Additional effected district)

Description Instructions Contribute Activity Stats

- Author: **HOT & Kathmandu Living Labs Volunteers**
- Requesting organization: **Nepal and International Response community**
- Priority: **Urgent**
- Imagery: **Bing and MapBox**

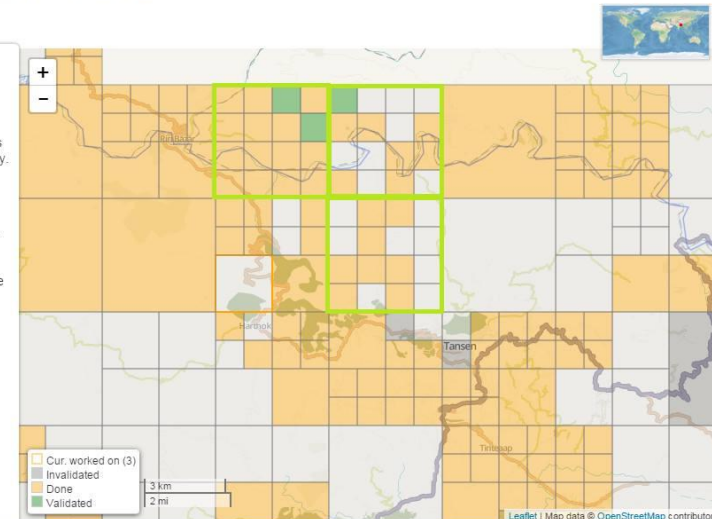
The Nepal government and the international community are responding rapidly to this emergency. The international charter was activated and provide post-disaster imagery. For this response, we coordinate with the Nepal government, the International organizations and the DHnetwork.

Friday May 8. 7,802 deaths are reported and more than 16,000 are injured. For this task we will map details such as roads, buildings, settlements, waterways. etc.

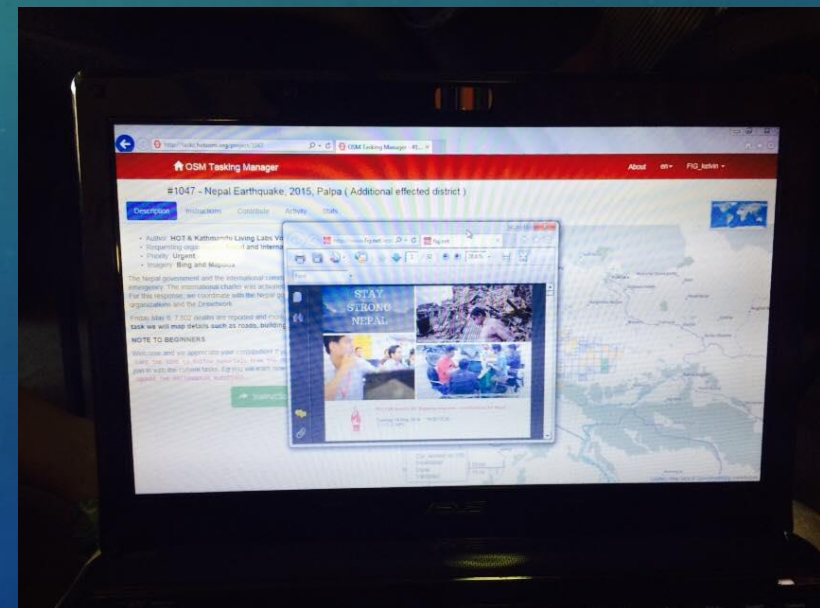
NOTE TO BEGINNERS

Welcome and we appreciate your contribution! If you have not mapped before, please TAKE THE TIME to follow tutorials from the [mappige](#) and [learnosm](#) sites before you join in with the current tasks. Eg you will learn how to [SQUARE THE RECTANGULAR BUILDINGS](#).

Instructions



Starting from the basics, 50 Young Surveyors in a room in Sofia's National Palace of Culture helped Nepal, with countless more around the world, since FIG YSN created a public event, inviting everyone to help.



THINK. ACT. EXECUTE.

A lot of stuff happens in one hour.

Volunteering our time and skills not only helps the people, organizations, humanitarian aid agencies and land professionals on the ground but also sets a good example for all of us. Helping others, especially collectively as a Network, can be one of the most rewarding experiences we can make and share.

...and as David Bowie said:

We can be heroes, just for one day.