

WG 3.1 e-Government and e-Citizen

Chair: Kari Strande (Norway), e-mail: kari.strande@statkart.no

Co-Chair: Peter Laarakker (the Netherlands), e-mail: peter.laarakker@kadaster.nl

Registered participants:

Rob Mahoney (UK) email: RobMahoney@compuserve.com

Robin A. McLaren (UK) email: Robin_McLaren@compuserve.com

Daniel Roberge, (Canada) email: Daniel.Roberge@mrnfgouv.qc.ca

Uzo Okafur (also vice chair of WG3.3) uzookaf@mweb.com.na

Jes Ryttersgaard (DK) email: JR@kms.dk

Jens Hollænder (DK) email: JEH@kms.dk

Tarja Myllymäki (SF) email: tarja.myllymaki@nls.fi

Jan Bares (CZ) janb@imip.mepnet.cz

Overall objective

Support awareness raising on interactive information flow between providers, partners and customers (PPP) based on Spatial Information Management (SIM) based tools

SIM as integrator of components for a Spatial Information Infrastructure within an Information Society

- **Services and workflows for decision makers and citizens in participatory democracy**
- **Government – business – customers: relations and activities**
- **Integration and co-operation in a distributed environment**
- **Business location and economical analysis**
- **Individual vs. business in SIM**
- **Mobile society**

Specific projects and outputs

Based on cooperation with other WG and other Commissions
WG3.1 will:

- Report on good practice of Spatial Information within e-Government supporting citizens in participatory democracy
- Facilitate experience exchange
- Summarise on lessons learned – success criteria and impact on administration and citizens
- Provide recommendations for facilitating interactive and participating eGovernment society
- Provide links to information and minutes of workshops

2002-2003

Encourage speakers and papers to FIG meetings.

examples of e-Government projects and programs where SIM is an important part.

- Papers and speakers to GIS 2002 symposium in ISTANBUL
- Papers and speakers to FIG WW in Paris 2003
- Papers and speakers to FIG Commission 3 Annual Meeting 2003 in Morocco

2003-2004

Links to e-Government web sites where SIM is an important part.

- To be prepared by the working group members by November 2003 (Partially done – need updates, supplements from WG members)
 - Research projects from EU 6FP to be included in the listing
 - Papers/presentation from other conferences to be included in the listing (Warsaw June, Vienna Oct, Jakarta oct 2004)
 - Select examples for closer assessments
 - Criteria to be set for the detailed study (delayed)
 - Sub – work group to be responsible for the study (delayed)
- (avoid double work - EU, UN and World Market Research Centre)

2005 - 2006

Publish report on good practice of SIM within e-Government supporting citizens in participatory democracy

Work shop (**Cairo**) for presentation and discussions on the e-Government issue and development (**extended with invited speakers and interested institutions for e-Content + call**)

Work shop (Budapest) eGovernment and eLearning

Work group meeting in Denmark August 2006

- Summarise lessons learned – success criteria – impact on administration and citizens
- Provide recommendations
- Report to be produced and presented (on the web and at FIG meetings)
- Updates on relevant links to good examples

Adjustments of WG 3.1 workplan

- Avoid double work
- Focus on the user side, democracy, access to information
- Not focus on technical part
- Focus on e-Citizens
- Trace the general developments and trends
- Give an overview and some best practice examples
- Report to FIG council and FIG society

Some links to e-Government

- Survey 2001 on Global e-Government
www.worldmarketsonline.com/e_gov_report.html
- Global UN portal on e-Government www.unpan.org/egovernment.asp
- Case studies on e-Government
www.developmentgateway.org/node/130619/

- New Zealand www.e-government.govt.nz
- USA www.whitehouse.gov/omb/egov
- World Bank www1.worldbank.org/publicsector/egov
- EU e-Government conference 2003
http://europa.eu.int/information_society/eeurope/egovconf
- Local e-Government UK www.localegov.gov.uk

UN-Survey on eGovernment

Assessment of the 191 member states according to their state of eGovernment readiness and the extent of e-participation worldwide

- Quantitative composite index of readiness – website assessment
- Telecommunication infrastructure
- Human resource situation

Huge disparities in access and use of ICT

Challenges to bring ICT to level the playing field for all

UN Global E-government Survey 2005

Table 3.2. E-government readiness index rank changes 2003-2005

<i>Country</i>	<i>2005</i>	<i>2004</i>	<i>2003</i>	<i>Change 2005-2004</i>	<i>Change 2005-2003</i>
United States	1	1	1	0	0
Denmark	2	2	4	0	2
Sweden	3	4	2	1	-1
United Kingdom	4	3	5	-1	1
Republic of Korea	5	5	13	0	8
Australia	6	6	3	0	-3
Singapore	7	8	12	1	5
Canada	8	7	6	-1	-2
Finland	9	9	10	0	1
Norway	10	10	7	0	-3
Germany	11	12	9	1	-2
Netherlands	12	11	11	-1	-1
New Zealand	13	13	14	0	1
Japan	14	18	18	4	4
Iceland	15	14	15	-1	0
Austria	16	17	21	1	5
Switzerland	17	15	8	-2	-9
Belgium	18	16	23	-2	5
Estonia	19	20	16	1	-3
Ireland	20	19	17	-1	-3
Malta	21	21	27	0	6
Chile	22	22	22	0	0
France	23	24	25	1	2
Israel	24	23	24	-1	0
Italy	25	26	17	1	-8

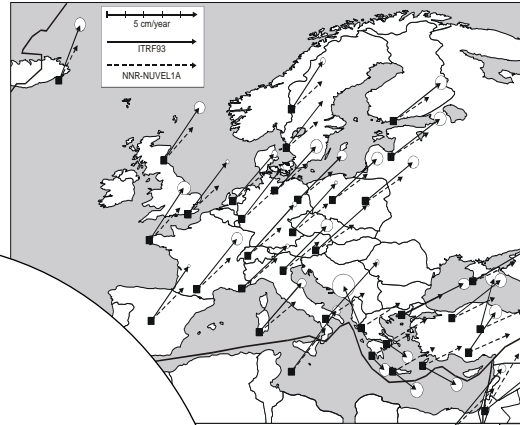
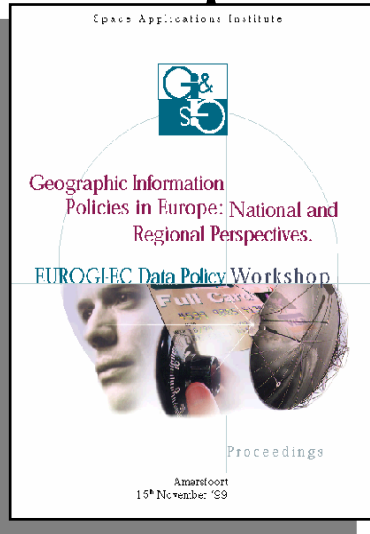
Relevant ongoing developments in Europe

- e-Government in EU, pan-European pilot projects
 - identify barriers, reinforce coordination, practical guidance
assessment of economic and social impact, research synergies,
framework for exchange of best practice
- eChallenges e-Conference Vienna oct 27-29 2004
- e-Land administration
- GeoPortal developments
- Web-Castle
- 6. FPR, IST, E-content +
- INSPIRE
- GMES

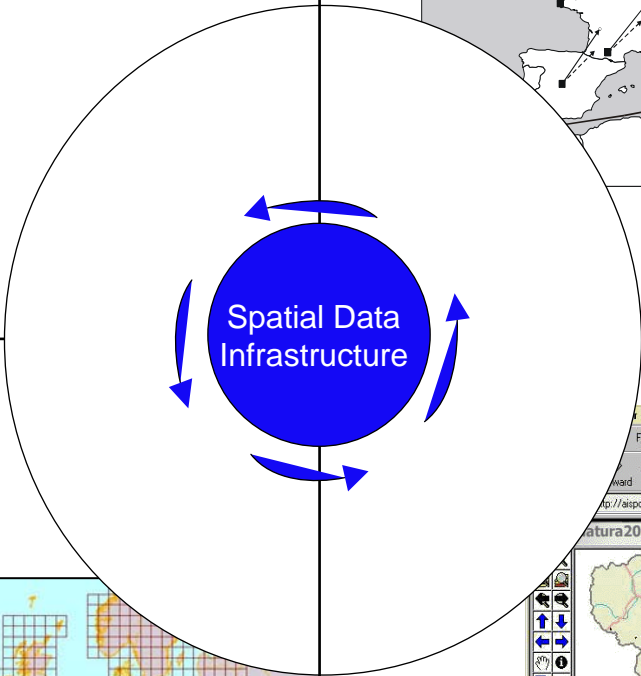
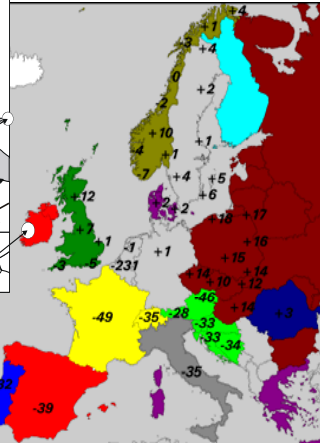


European Spatial Data Infrastructure

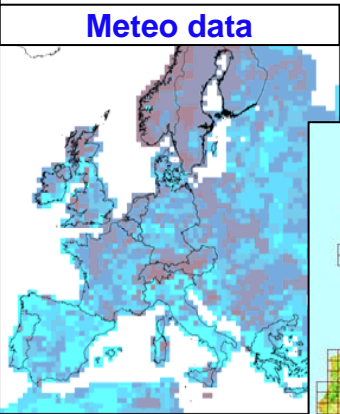
Different Policies and standards



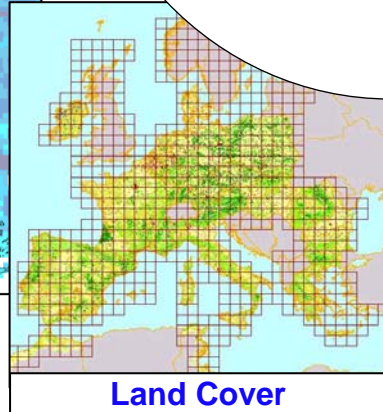
Different sea levels in Europe



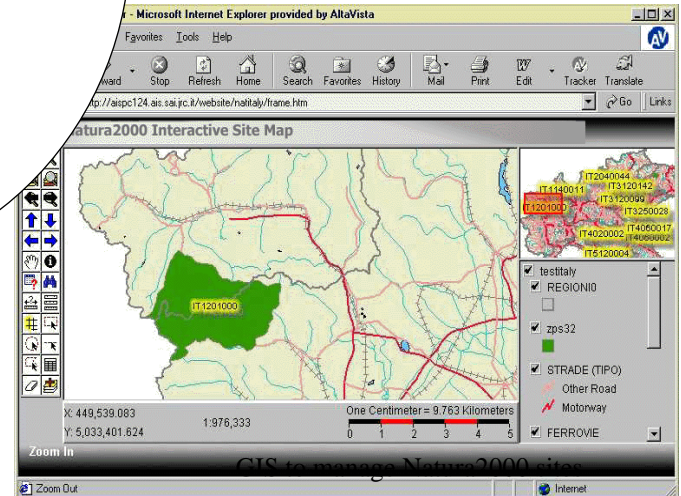
Catchments



Meteo data



Land Cover



Needs to create european spatial data sets

INSPIRE required services

Article 18

Member States shall establish and operate a network of the following services for the spatial data sets and services for which metadata have been created in accordance with this Directive:

- (a) **discovery services** making it possible to search for spatial data sets and spatial data services on the basis of the content of the corresponding metadata and to display the content of the metadata;
- (b) **view services** making it possible, as a minimum, to display, navigate, zoom in/out, pan, or overlay spatial data sets and to display legend information and any relevant content of metadata;
- (c) **download services**, enabling copies of complete spatial data sets, or of parts of such sets, to be downloaded;
- (d) **transformation services**, enabling spatial data sets to be transformed;
- (e) **“invoke spatial data services”** services, enabling data services to be invoked.

Those services shall be easy to use and accessible via the Internet or any other appropriate means of telecommunication available to the public.

The portals:

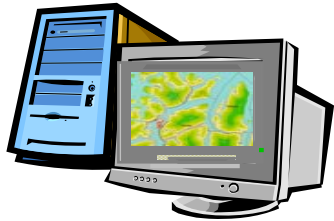
General view

Users

Upload data to thick client:

Thematic applications

Download dataset



Internet services (WMS, WFS, ++)

KOMM

DN

NGU

NIJOS

SK

SFT

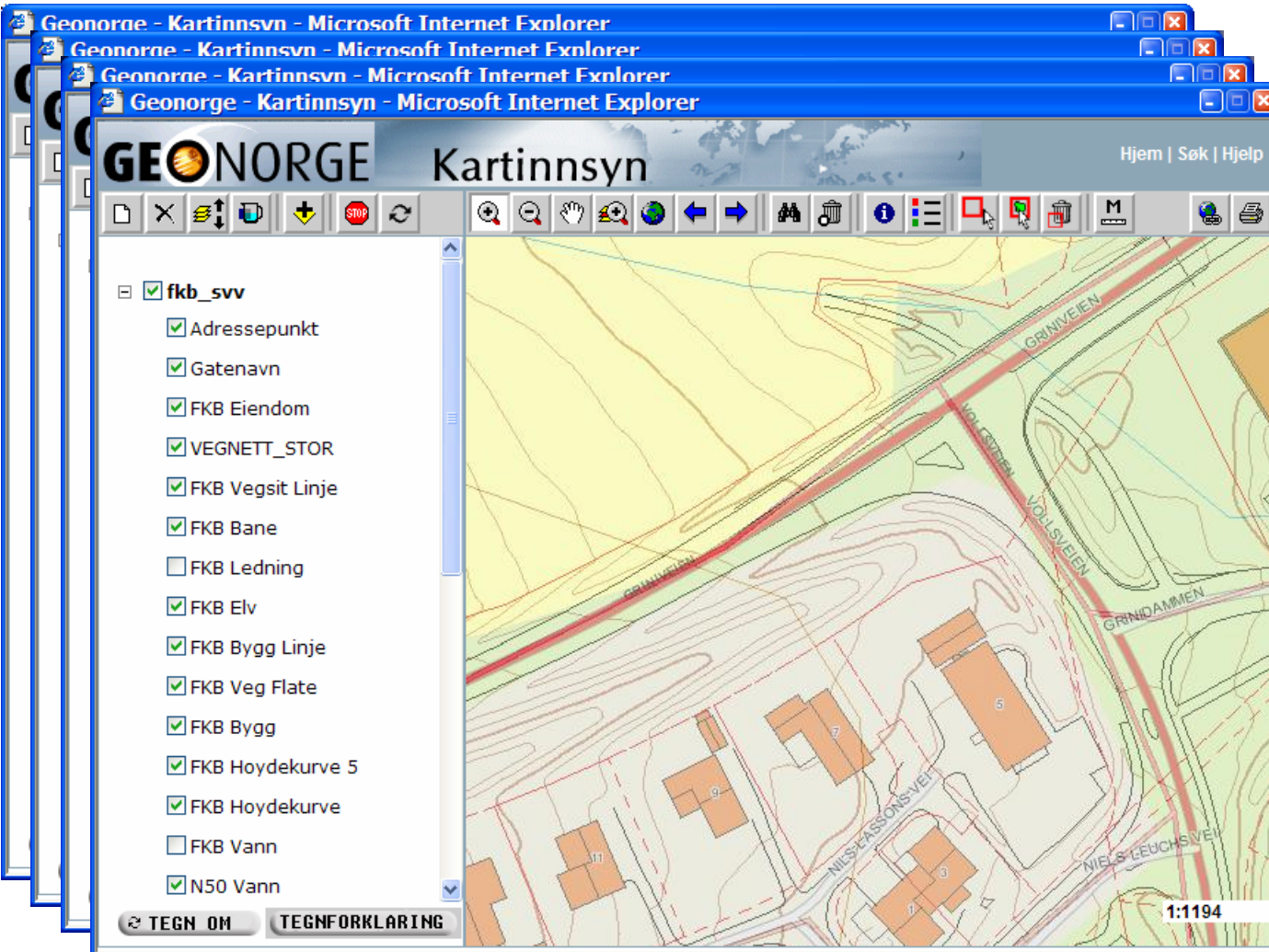
COUNTY

OTHER



434

The map viewer ...



Overview

1:50 000 scale

1:5 000 scale

Detail

AIS system for Coast Directorate

Automatic Identification System

- MMSI number - unique identification
- Navigation status (e.g. "at anchor" , "under way using engine")
- Rate of turn
- Speed over ground - 1/10 knot resolution
- Position accuracy - differential GPS or other
- Longitude - to 1/10000 minute and Latitude - to 1/10000 minute
- Course over ground - relative to true north to 1/10th degree
- True Heading - 0 to 359 degrees derived from gyro input
- Time stamp



background map

from NMCA





Welcome to WebCastle



>>[Enter New Version 2.3](#)<<

Web based Case study locator is developed in a framework of the [GINIE project](#)
The case study services should raise the awareness of the benefits to be enjoyed from the use and exploitation of geographic information and brings the benefits of GI towards [European] citizens.

The main objective of WebCastle is deposition, maintenance and distribution of description of case studies. The core description is formalised through metadata, which are compliant with ISO 19115 (metadata for geographic information). The short description of metadata items can be visited in a proposal of [Metadata items](#).

Except of case studies Webcastle enables a description of organisations, persons and documents, which are related to case studies. WebCastle offers searching engine for all type of registered objects and retrieving information, link to original sources and related subjects.

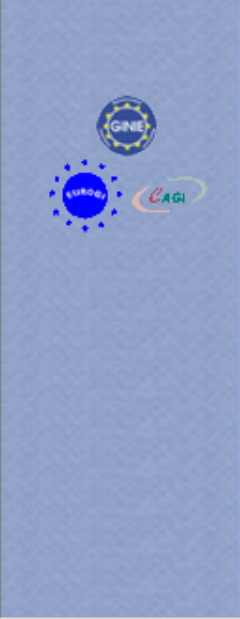
We need your participation. Webcastle NEEDS TO BE POPULATED with case studies

Please send any comments to [Jan Ruzicka](#)

Authors: Jiri Horak, Bronislava Horakova, Jan Ruzicka, Eva Pauknerova, Tomas Duchoslav [VSB-Technical University of Ostrava](#) + [CAGI](#) (Czech associaton for geoinformation), Ostrava - Prague, Czech Republic



- Main MENU
- News
- Register
- Log in
- Help
- Your comments
- Home
- Case study
- Organisation
- Person
- Document



Case study

Identification

Title **Flood Control Information System**

Description

Abstract	The Flood Control Information System is an Internet system for public purposes, which accesses the main Water Conservancy databases. The system also offers alternatives ways to input flood control information into the Water Conservancy databases beside conventional methods.
Language (s)	English
Character set(s)	usASCII
Purpose of production	The Flood Control Information System is used basically for public purposes and also offers alternative ways to input flood control information into the Water Conservancy databases beside conventional methods.
WWW address(s)	www.geoview.hu

Extent (temporal, spatial)

Geographical areal(s)	Hungary
Temporal extent description	
Date of case study creation	2003

Classification

* ISO Topics	biota, environment, inlandWaters
Keywords	Flood Control Information System, Environment, Disaster Recovery, Internet

Metadata of metadata

Date of the metadata update	12 November 2003
Metadata language	English
Metadata character set(s)	usASCII
Metadata contact (s)	Persons: Bencsik Organisations: Not specified



magyar verzió english version

visible solutions



Our solutions About us Our references IT services Customer services



For more then a decade our company has been a prominent representative of innovation and information technology in the domestic market. Based on our good results in the Spatial Information System and Internet technologies on an international level, and on our highly qualified and dynamic staff, we define our mission statement. Our mission is to help our clients integrate into the cutting-edge world of network technology.

In order to achieve this goal, we are creating solutions in which the Internet, the most widely accessible and added value mediator is serving the goals of our clients, institutions, and businesses.



G² PORTAL

Geoview's Content Management Tool provides maximum flexibility for its users. It is very easily customized, so it can be adjusted to suit various needs. The portal has implemented an Internet content management system, where the page displays are based on database systems; therefore, it can be dynamically adjusted and programmed. The structure of the portal can also be customized or refreshed without extensive knowledge of programming.

e-Municipality



E-Municipality is the realization of electronic administration and customer service. It is an important issue from the point of joining the EU, because the EU has already identified the concrete requirements of electronic administration in the Common List of Basic Public Services. The municipalities' static and dynamic web presentations can open a window onto the world through "one window customer service" up to the settlement's marketing-efficient publication. The municipalities obtain a highly efficient informative and external relations management tool.

"ARINFO" - Flood Control Information System

The Flood Control Information System (in Hungarian ARINFO) is an internet system for public purposes, which depending on existing main databases of Water Conservancy. The system also offers alternativ ways to input flood control information into the Water Conservancy databases beside conventional methods.



Institute of Municipal Informatics of Capital Prague



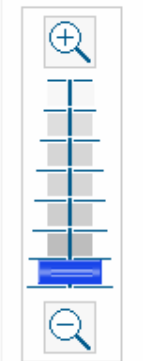
- ABOUT US
- NEWS
- SERVICES
- LOCATION
- CONTACTS
- DOCUMENTS
- SITE MAP
- MAPSHOP







Zoom dinàmic



CRS/SRS

EPSG:23031

Tamany mapa

520x520



Escala = 1:1643761

65.9 Km

Cercador

- Municipis
- Topònims
- Equipaments
- Carrerer 

Temes **Servidors**

- MAPES TEMÀTICS **MD**
- MAPES CLIMÀTICS **T** 
- ORTOFOTOS ICC **MD**
- CREAF-UAB_MiraMon **MD**
- DPT. MEDI AMBIENT **MD**
- MAPES GEOLÒGICS
- CARTOGRAFIA ICC
- INSTITUTO GEOGRÁFICO NACIONAL (IGN)
- DIRECCIÓN GENERAL DE CATASTRO 
- LOCALRET Equipaments **MD**



Map navigation and utility icons:

- Home
- Zoom in (+)
- Zoom out (-)
- Full screen
- Info
- Hand
- Print
- XY coordinates
- Layers

Zoom dinàmic

Dynamic zoom control:

- Zoom in (+)
- Zoom out (-)
- Zoom slider
- Reset zoom
- Zoom out (-)

CRS/SRS

EPSG:23031

Tamany mapa

520x520



Escala = 1:1643761



Cercador

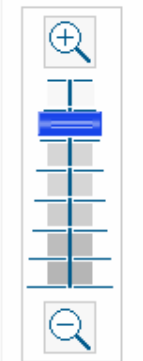
- Municipis
- Topònims
- Equipaments
- Carrerer

Temes **Servidors**

- MAPES TEMÀTICS **MD**
- MAPES CLIMÀTICS **T**
- ORTOFOTOS ICC **MD**
 - Ortofoto 25000 **WCS** **T**
 - Ortofoto 5000 **T**
 - LandSat **T**
- CREAF-UAB_MiraMon **MD**
- DPT. MEDI AMBIENT **MD**
- MAPES GEOLÒGICS
- CARTOGRAFIA ICC
- INSTITUTO GEOGRÁFICO NACIONAL **(IGN)**
- DIRECCIÓN GENERAL DE CATASTRO



Zoom dinàmic

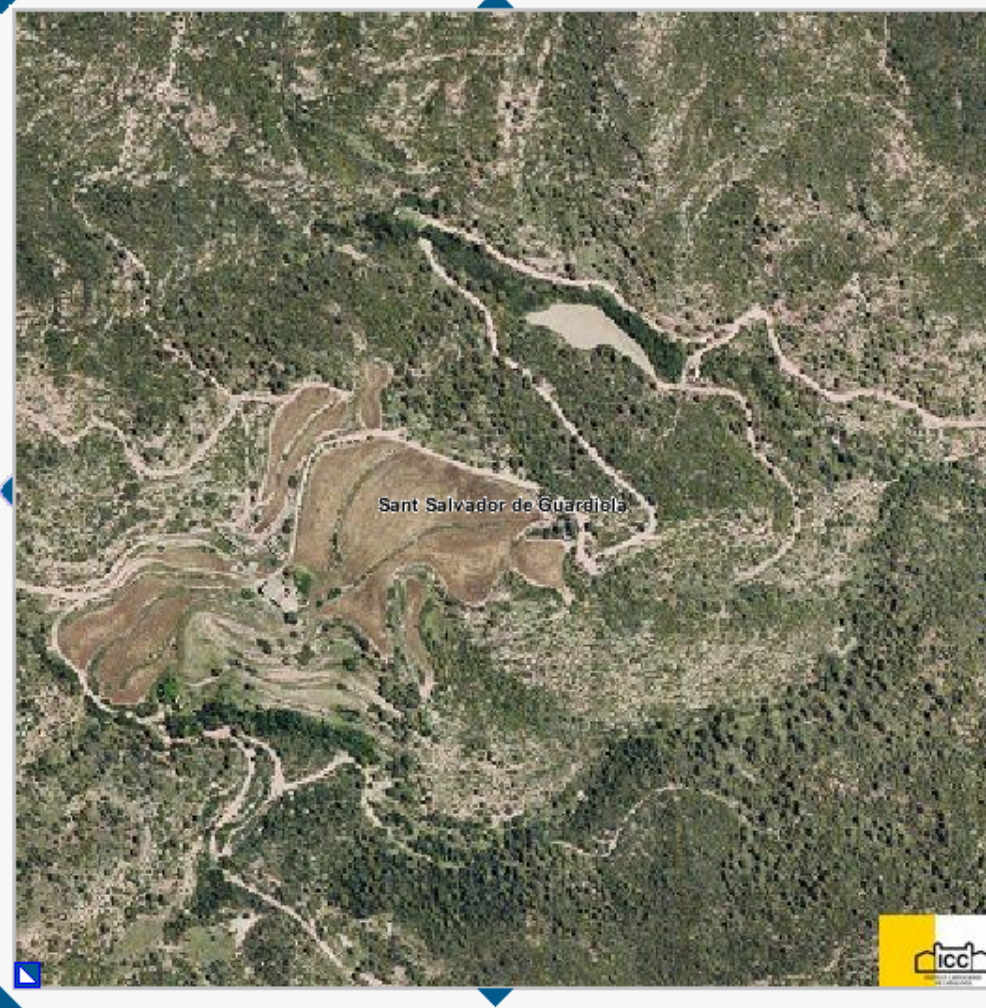


CRS/SRS

EPSG:23031

Tamany mapa

520x520





Escala = 1:4567

Cercador

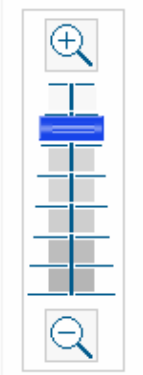
- Municipis
- Topònims
- Equipaments
- Carrerer 

Temes **Servidors**

- MAPES TEMÀTICS **MD**
- MAPES CLIMÀTICS **T** 
- ORTOFOTOS ICC **MD**
 - Ortofoto 25000 **WCS** **T**
 - Ortofoto 5000 **T** **>>** **X**
 - LandSat **T**
- CREAF-UAB_MiraMon **MD**
- DPT. MEDI AMBIENT **MD**
- MAPES GEOLÒGICS
- CARTOGRAFIA ICC
- INSTITUTO GEOGRÁFICO NACIONAL (**IGN**)
- DIRECCIÓN GENERAL DE CATASTRO 



Zoom dinàmic

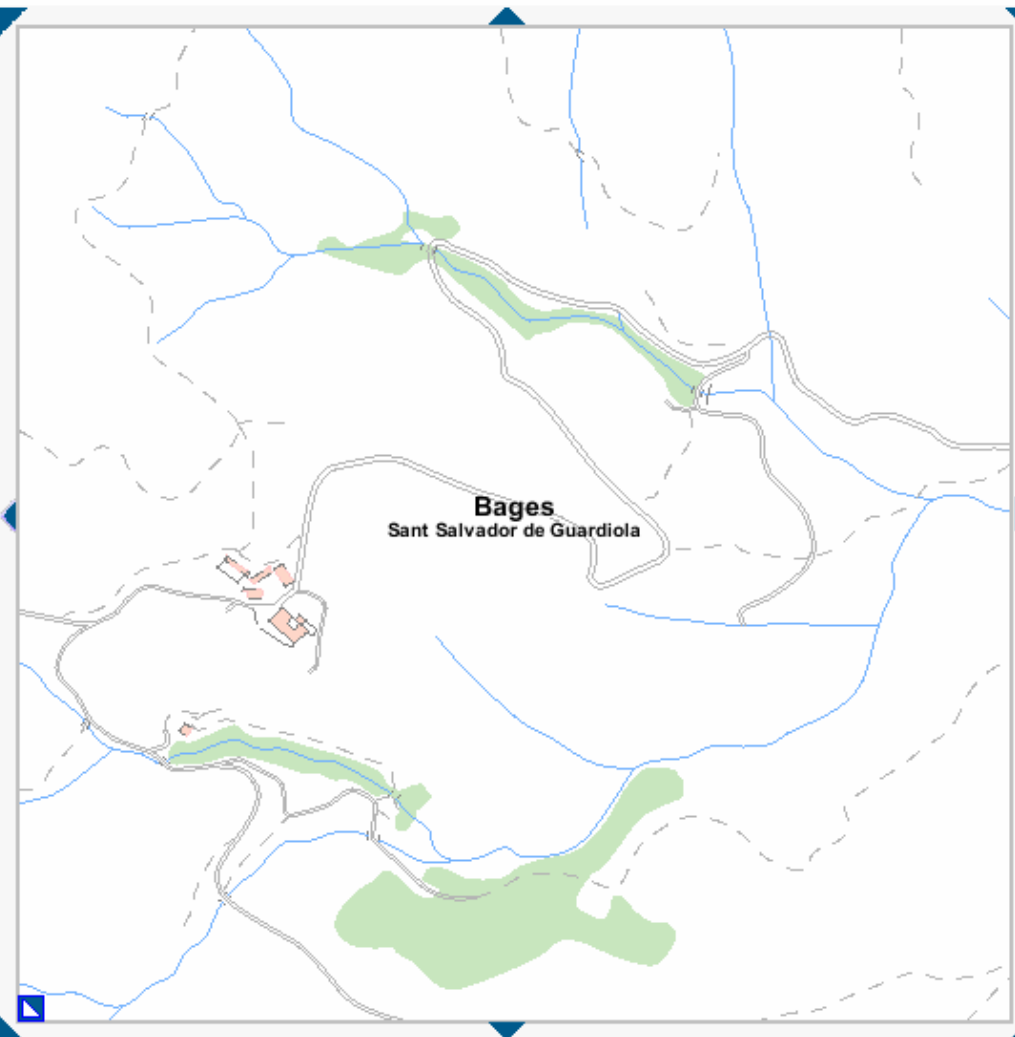


CRS/SRS

EPSG:23031

Tamany mapa

520x520



Escala = 1:4567



Cercador

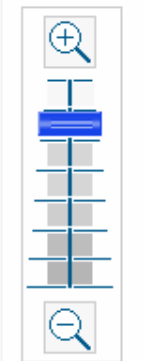
- Municipis
- Topònims
- Equipaments
- Carrerer

Temes Servidors

- Topogràfic 5.000
- Indexos**
- Municipis**
 - Noms de comarca
 - Noms de municipi
 - Municipis **GML**
 - Comarques **GML**
- INSTITUTO GEOGRÁFICO NACIONAL (IGN)**
- DIRECCIÓN GENERAL DE CATASTRO**
 - Cadastre **LL**
- LOCALRET Equipaments MD**
- STSI Telecentres MD**



Zoom dinàmic

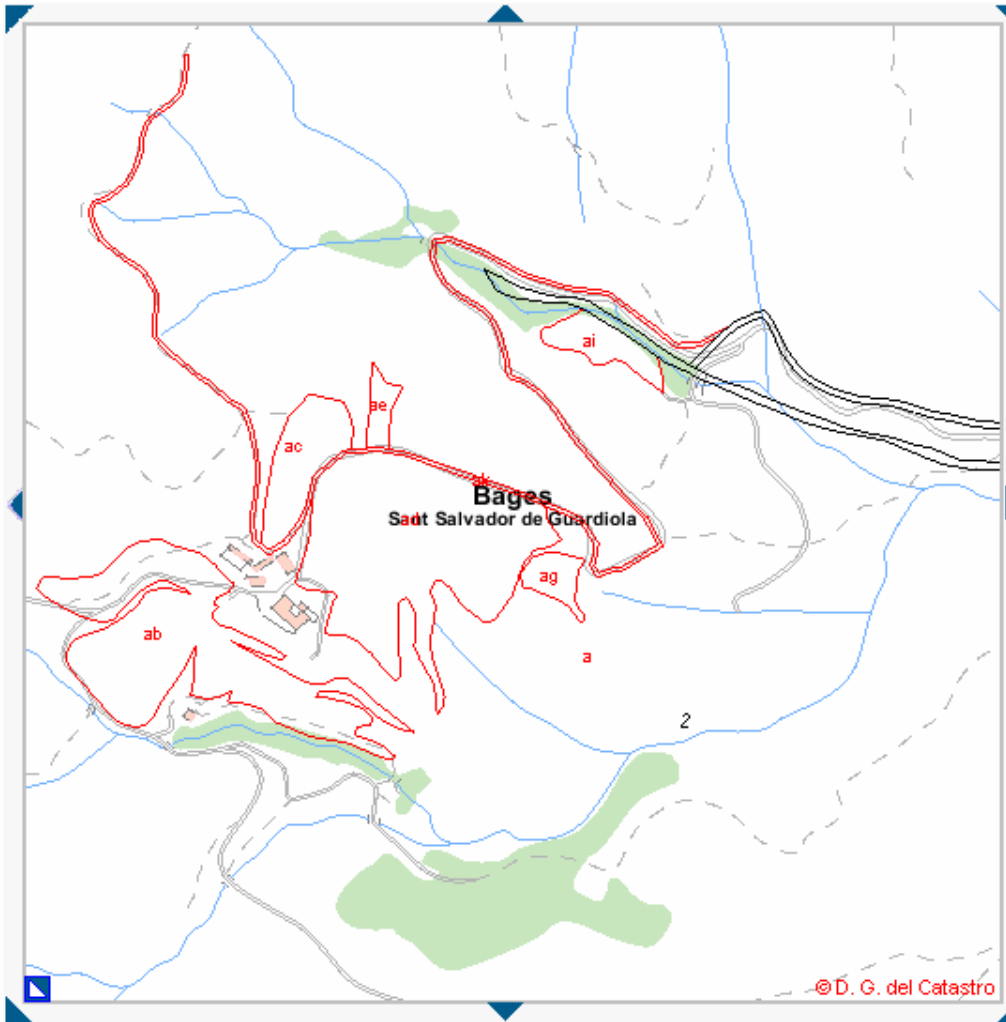


CRS/SRS

EPSG:23031

Tamany mapa

520x520





Escala = 1:4567

© D. G. del Catastro

Cercador

- Municipis
- Topònims
- Equipaments
- Carrerer  

Temes **Servidors**

- Topogràfic 5.000 
- Indexos
- Municipis
 - Noms de comarca
 - Noms de municipi
 - Municipis **GML**
 - Comarques **GML**
- INSTITUTO GEOGRÁFICO NACIONAL (IGN)
- DIRECCIÓN GENERAL DE CATASTRO 
 - Cadastre **LL**
- LOCALRET Equipaments **MD**
- STSI Telecentres **MD**
- INSTITUTO GEOGRÁFICO DEL



Geo Enabled And Better Internet Oriented Services

Quick Jump

Please, don't use menus (above). The use can seriously damage your computer :-)

```

\\-|-///      Set This Site As "Home" Site,
(  o  o  )      Add To "Favorites" or Send To A "Friend"
-----o00o- ( ) -o00o---What's new on the site?-----
    
```

Content List (What Is Under The Hood?): [Show](#) [Hide](#)

- [Astronomy, Universe & Time](#)
- [Earth From Sky](#)
- [GPS Navigation](#)
- [Slovenia - Maps & Related Info](#)
- [Other Maps & Related Info](#)
- [Little Help From A Friend](#)
- [Tools](#)

- [Latest Press News](#)
- [Music](#)
- [Recycle Bin](#)
- [Weather Forecast](#)
- [Weather Forecast - Simple](#)
- [Weather Observation](#)
- [Games](#)
- [Search](#)

GeaBios GIS Public Service

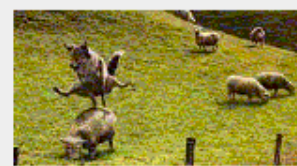
The Next Door Neighbor from Antarctica to Narvik - like Alice

GeaBios stands for **Geo Enabled And Better Internet Oriented Services**.

People backing up GEABIOS come from a variety of businesses and institutions. They acknowledge that the use of the Internet is a problem. GeaBios depicts their way how to solve the problems in certain application areas. They also acknowledge that GeaBios is not the only possible solution. With proper mixture of ideas, philosophy, courage, technical knowledge and understanding of end-user navigation through the Internet, GeaBios tends to be a friendly and efficient solution. GeaBios integrates technology, data, maps, scenarios and applications through clearness and easiness of user interface.

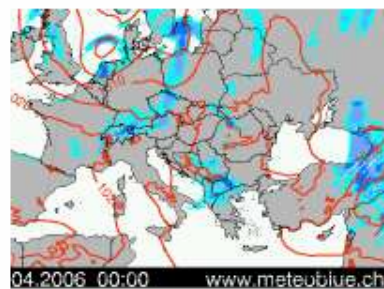
GeaBios is a process not a fixed solution.

Privacy policy: We do not collect any information about you, we do not send any email to anyone, GeaBios sends a "cookie" to your computer, that is a piece of data that identifies you as a unique user during session, helping our server to browse over our databases upon your request (data set size of around 200GB). The permanent "cookie" saves the position and scale of the map you visited, next time you will be able to start from that point on. If "cookies" are not available, no data will come from the server (our server adores cookies, ok?, a bit of electricity, too). Java Applets can not harm your computer, because they are running in the sandbox. We



Troubleshoot: This is Java based applications` site, so, **Java and Cookies must be enabled**. No Java, No Cookies means NO DATA and NO MAPS, Check for supported browsers (index).

XML [Weather RSS Feed](#)



Satellite images
Adriatic Sea:
[Venezia](#), [Trieste](#), [Ankaran](#), [Izola](#), [Piran](#), [Savudrija](#), [Umag](#), [Novigrad](#), [Poreč](#), [Zadar](#), [Pakoštane](#), [Split](#), [Dubrovnik](#),
Worldwide:
[Mt. Everest](#), [Manqa Parbat](#), [Copacabana](#), [Pyramides](#), [Arc de Triomphe](#), [Coloseum](#), and more >>>

Page designed and maintained by ACADEMA © 1996-2006, All Rights Reserved

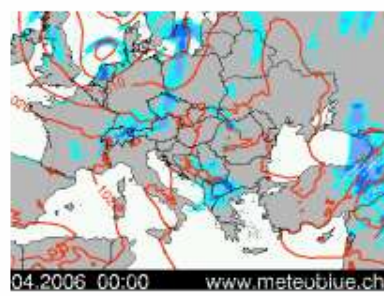
Satellite Picture

Click on picture to enlarge, but you should wait a while picture to load and recalculate. At the end of that process you will notice a spy glass in the upper left corner. (Java)
If you found the picture with search engine and you are looking the page in search engine's environment, load the original page or application will not work!!!



[supported browsers \(index\).](#)

XML [Weather RSS Feed](#)



Satellite images
Adriatic Sea:
[Venezia](#), [Trieste](#), [Ankaran](#), [Izola](#),
[Piran](#), [Savudrija](#), [Umag](#), [Novigrad](#),
[Poreč](#), [Zadar](#), [Pakoštane](#), [Split](#),
[Dubrovnik](#),
Worldwide:
[Mt. Everest](#), [Nanga Parbat](#),
[Copacabana](#), [Pyramides](#),
[Arc de Triomphe](#), [Coloseum](#),
and [more >>>](#)



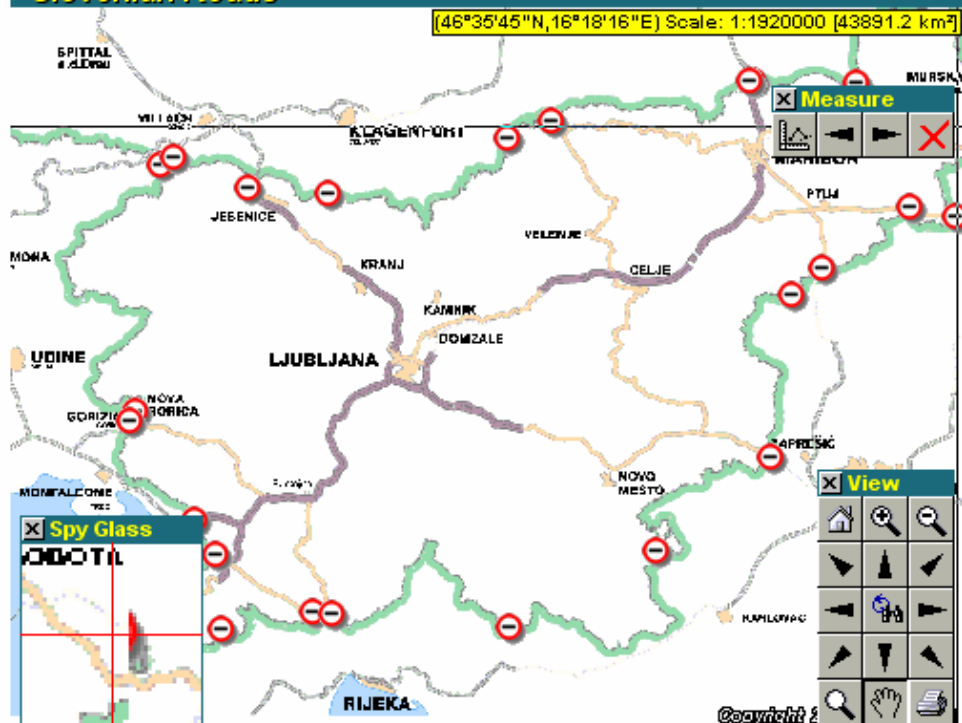
igned and maintained by [ACADEMA](#) © 1996-2006, All Rights Reserved

Slovenia: Home of Europe's Worst Drivers

The German Automobile Association (ADAC) conducted a test of European drivers in July 2005 and Slovenes finished dead last. That's about Germans and what can we say about us: We are the best, f... the rest!

Data sources: *SURS, GURS, DURS, DARS, DRSC, Police, AMZS and CP*

Slovenian Roads



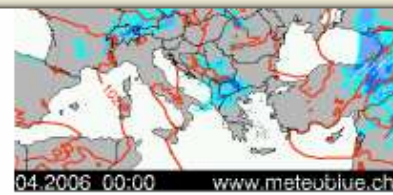
Search pattern: Search Reset 1:2.500.000

[Refresh Data every 10 minutes](#) (Osveži podatke vsakih 10 minut)

If you entered the search pattern and got more results, you can move among results (one by one) pressing [Search] button. When you change the search pattern, you will get another result set. When empty the search pattern, with pressing [Search] button, you will reset the result set.

Check for [wet roads!](#)

Help



Satellite images
Adriatic Sea:
 Venezia, Trieste, Ankaran, Izola, Piran, Savudrija, Umag, Novigrad, Poreč, Zadar, Pakoštane, Split, Dubrovnik,
Worldwide:
 Mt. Everest, Nanga Parbat, Copacabana, Pyramids, Arc de Triomphe, Colosseum, and more >>>



-2006, All Rights Reserved

Slovenian Roads
The German Automobile Association (ADAC) conducted a test of European drivers in July 2005 and Slovenes finished dead last. That's about Germans and what can we say about us: We are the best, f... the rest!

Data sources: *SURS, GURS, DURS, DARS, DRSC, Police, AMZS and CP*



[Dolenjska](#)
[Gorenjska](#)
[Prekmurje](#)
[Prestolnica](#)
[Primorska](#)
[Štajerska](#)

Search pattern:

[Refresh Data every 10 minutes](#) (Osveži podatke vsakih 10 minut)

Weather Viewer 2.11

Select Forecast No.01: Sun,2006-04-02 03:00

Interval: 1 ... 16

Play Forward Delay Time: 500 ms

Play Reverse Delay Time: 500 ms

Keyboard Shortcuts:

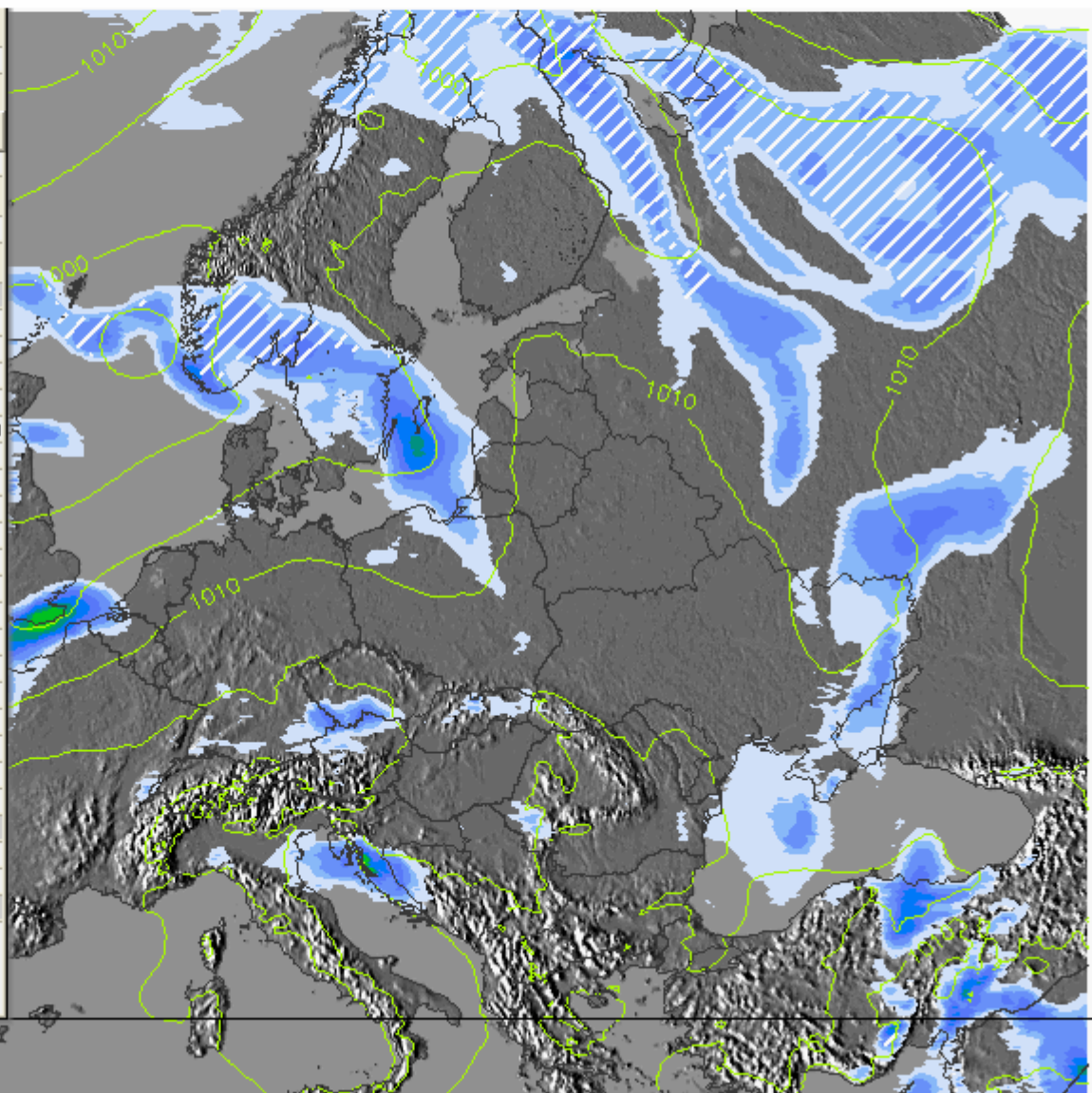
p	play/pause (stop)
m	mode (toggle)
+/-	next/previous image
s	search & jump
c	cursor freeze (toggle)
w	zoom (toggle)
r	zoom frame reduce
e	zoom frame expand
q	zoom factor (toggle)
d	mark as delete
u	unmark as delete
i	unmark all (init)
t	timestamp reload
1 ... 9	jump to ...
a	annotations (toggle)
l	load annotations
space	table of a.(toggle)
ctrl space	data window (toggle)
h	help (toggle)

Mouse:

down/up	play/stop
short drag	play

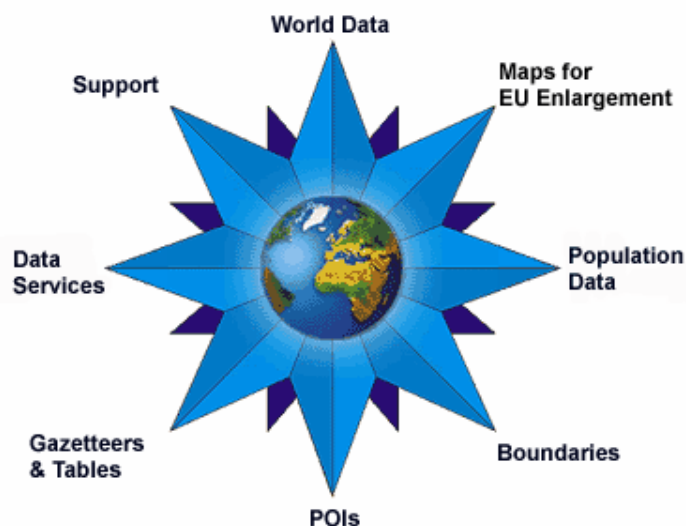
Info:

Weather Viewer
 Version: 2.19 (August 19th, 2005)
 © 1999 - 2005, GeaBios,
 All Rights Reserved



[Home](#)[About Us](#)[News](#)[Site Map](#)[Downloads](#)[Romania](#)[Jobs](#)[Contacts](#)[Comments](#)[World Data](#)[Maps for
EU Enlargement](#)[Population Data](#)[Boundaries](#)[POIs](#)[Gazetteers &
Tables](#)[Data
Services](#)[Support](#)

Search:



Gateway to Central & Eastern Europe

NEWS

[Contact Us](#)

Contact us for details of our partner initiatives.

[PDA web site](#)

Check out our new PDA and GSM-phone web site dedicated to the EU Enlargement Countries at www.test.geo-strategies.com/pda.

[High Resolution Data](#)

We have recently released



World Data

- Home
- About Us
- News
- Site Map
- Downloads
- Romania
- Jobs
- Contacts
- Comments

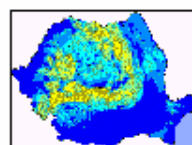
- World Data
- Maps for EU Enlargement
- Population Data
- Boundaries
- POIs
- Gazetteers & Tables
- Data Services
- Support

Geo Strategies' main activity is the production of digital geographic data. This tends to be used for two purposes - for the production of paper maps and other cartographic products, Location Based Services (LBS), and for use in a variety of GIS and computer-based planning and modelling systems.

Click on **Data Availability** to see what data is available on a regional basis, or on the icons for further information on the various map types-



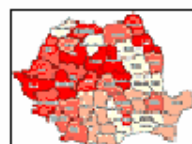
Topographic maps



Derived maps



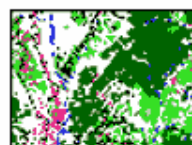
Cadastral maps



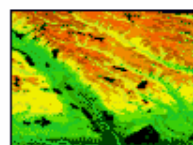
Thematic maps



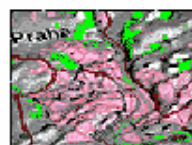
Demographic maps



Clutter maps



Terrain models



3-D Views



Interactive raster



Interactive vector

Search:



Location Based Services

Data Availability

Search:



Geo Strategies has databases of Points of Interest (POIs) for Central & Eastern Europe (CEE), and also for the Middle East. These POIs can be supplied as stand-alone databases, or as fully geo-coded lists for use in conjunction with either Geo Strategies' or third-party base-maps.

POI information is divided into two categories - Generic POIs and Business POIs.

Generic POIs are, in essence, details of the public infrastructure including landmarks, beauty spots, churches, monasteries, embassies and other items which will be of direct interest to tourists and the general public.

Business POIs are mainly for enterprise use in conjunction with other applications e.g. for planning, administration and routing.

Business POIs also include added value components such as types of food (for clubs and restaurants), dress-code, type of entertainment, star rating (for Hotels), parking, languages spoken and similar items of interest to the Business community or for those developing Location Based Services for use over the web or via mobile telephony.



Click on the country of interest to check the availability of POI data.

- | | |
|--------------------------------|--------------------------|
| Bulgaria | Moldova |
| Cyprus | Poland |
| Czech Republic | Romania |
| Estonia | Slovakia |
| Hungary | Slovenia |
| Latvia | Turkey |
| Lithuania | Ukraine |
| Malta | |

For further information, please contact Geo Strategies at:

- Maps for EU Enlargement
- Maps for EU Enlargement
- Population Data
- Boundaries
- POIs
- Gazetteers & Tables
- Data Services
- Support



Geo Strategies' POI databases for Bulgaria provide essential information for businesses developing Location Based Services (LBS), as well as for users in central and local government, emergency services and for use in the commercial sector.

The datasets contain both addressable and non-addressable* information. This makes it suitable for "Where is my nearest...?", or "How do I get to...?" services, as well as providing landmarks for applications involving routing, navigation, logistics and spatial analysis.

Search:

* Note: Non-addressable POIs are those items to which one would never send a letter, such as monuments, statues, mountain peaks, beauty spots and similar.



The POI database is grouped under 12 main headings:

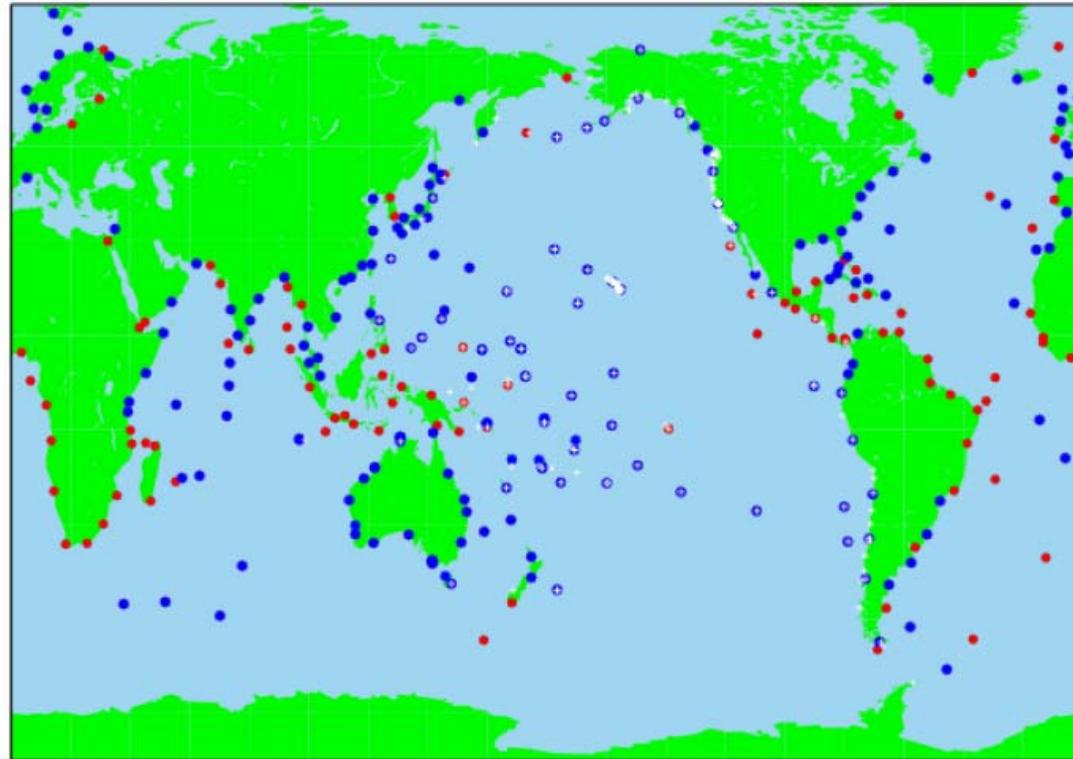
- Accommodation, Eating & Drinking [19]
- Attractions [16]
- Commercial Services (Business) [16]
- Health & Education [14]
- Manufacturing & Production [8]
- Public Infrastructure [12]
- Retail [13]
- Sport & Entertainment [20]
- Transport [13]
- Wholesale [11]
- Centres of Settlements (for routing) [1]
- Entry Points [1]

Each group is sub-divided into a number of categories (shown in blue) - total of 6144 categories in all

Disaster prevention and preparedness



A Global Tsunami Water Level Network
based on the GLOSS Core Network (GCN)



- Operational - Possible upgrade needed for tsunami warning (e.g., real-time transmission, faster sample rate)
- Major upgrade or new installation required

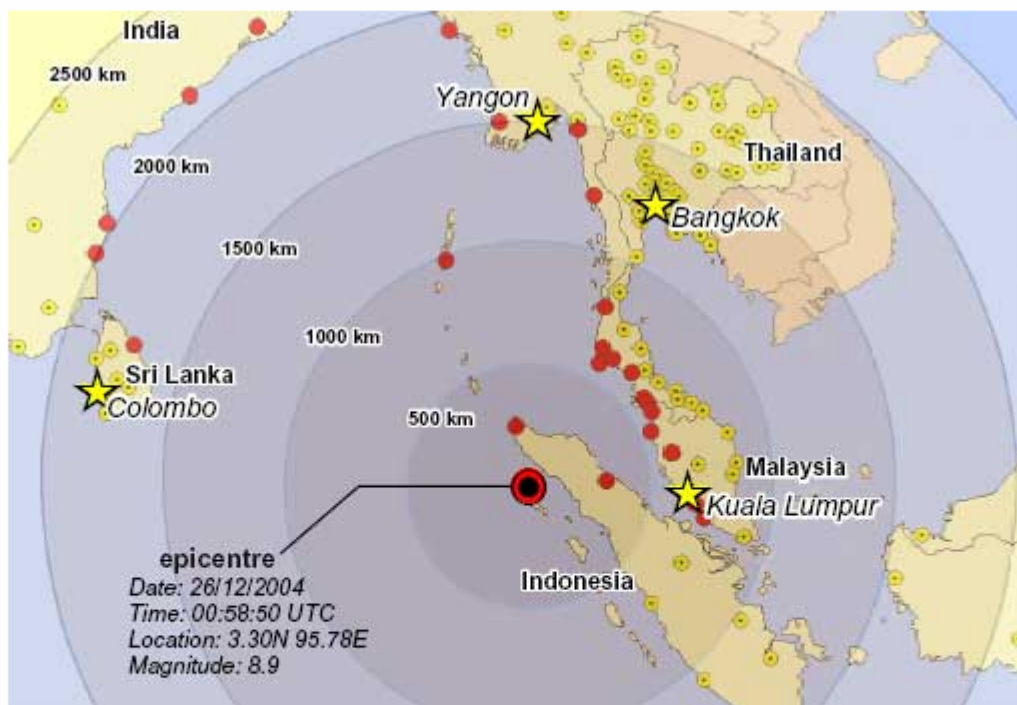
White crosses - Water Level Stations currently reporting to the Pacific Tsunami Warning Center (PTWC)

Budapest WS 27 -29 April 2006



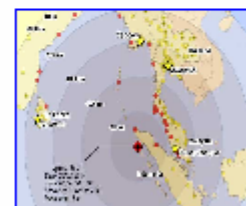
WELCOME!

The purpose of this web-based **Civil Military Operations Center (CMOC)** is to provide an easy-to-use tool for people to assist in a given geographic area. The goal is to match validated humanitarian needs to resources available from government organizations, non-government organizations and individuals. It is an electronic market place where goods, resources and capabilities are matched to help the local residents.



Source: UN Office for the Coordination of Humanitarian Affairs

Tsunami



[Show Map](#) [Dont Show Map](#)

Multinational Forces SOP

version 1.4a

[Index](#)

Highlights

1. Operational Start

- Request For Assistance
- Information Exchange
- Camp Information
- Laboration Tools

23:28:50

Local Hawaii (US) Time

09:28:50

UTC/GMT Time

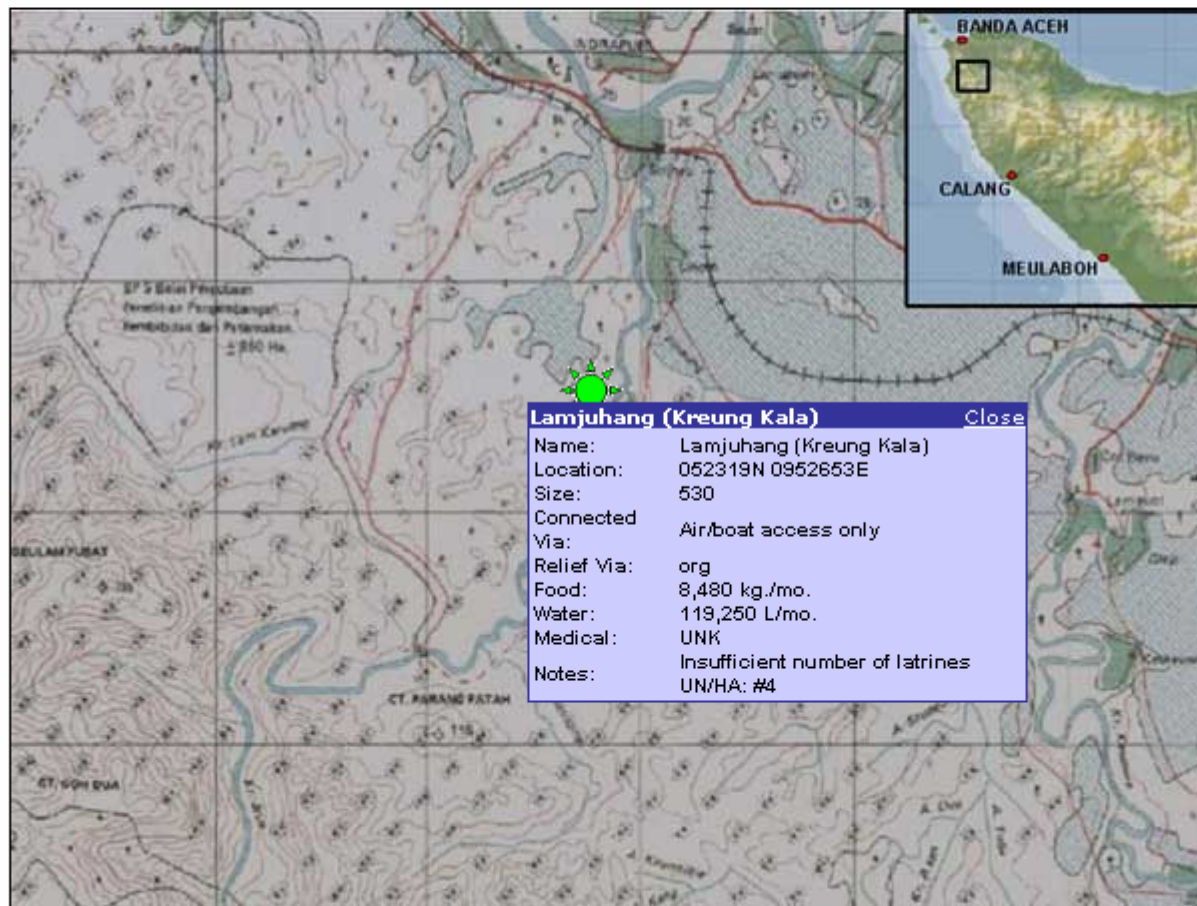




ROADS AND BRIDGES WASHED
OUT AND UNUSABLE EVERY 2-5
MILES

ACEH_49 MAP CAMP INFORMATION

[Main Map](#) | [Aceh Map](#)



Critical



Immediate



Stable

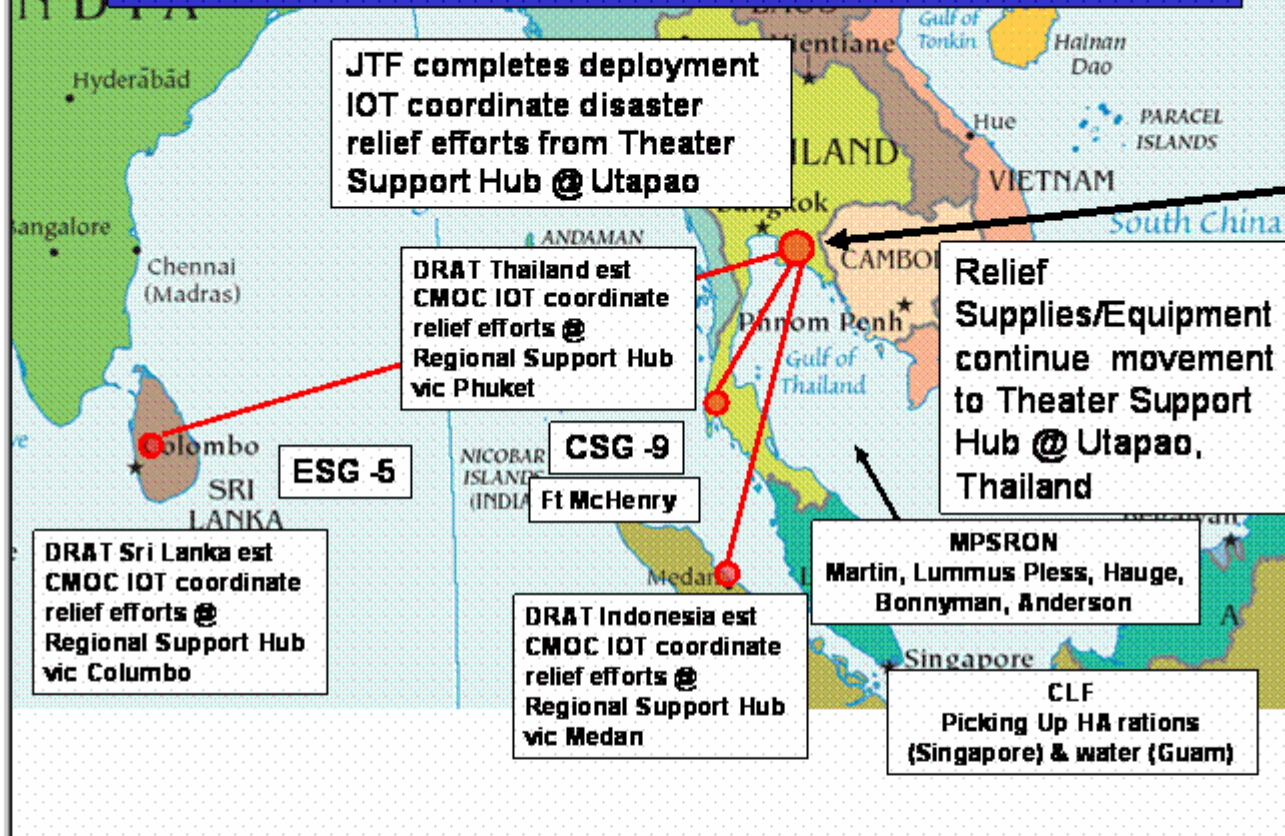
Latest Camp Updates

22:30:48
Local Hawaii (US) Time

08:30:48
UTC/GMT Time

Click on a camp icon to view detailed information.

Phase II Execution

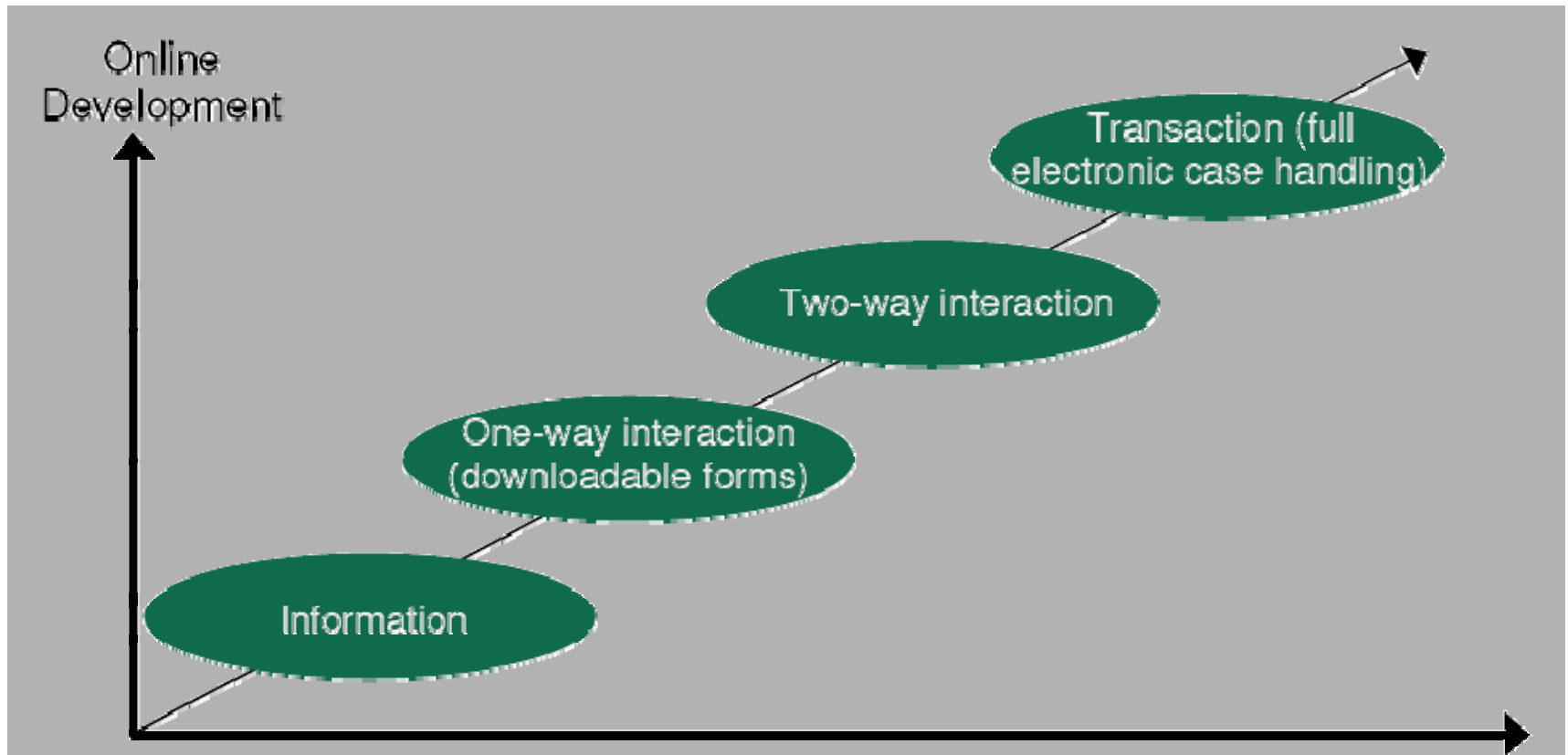


◀ Previous Slide

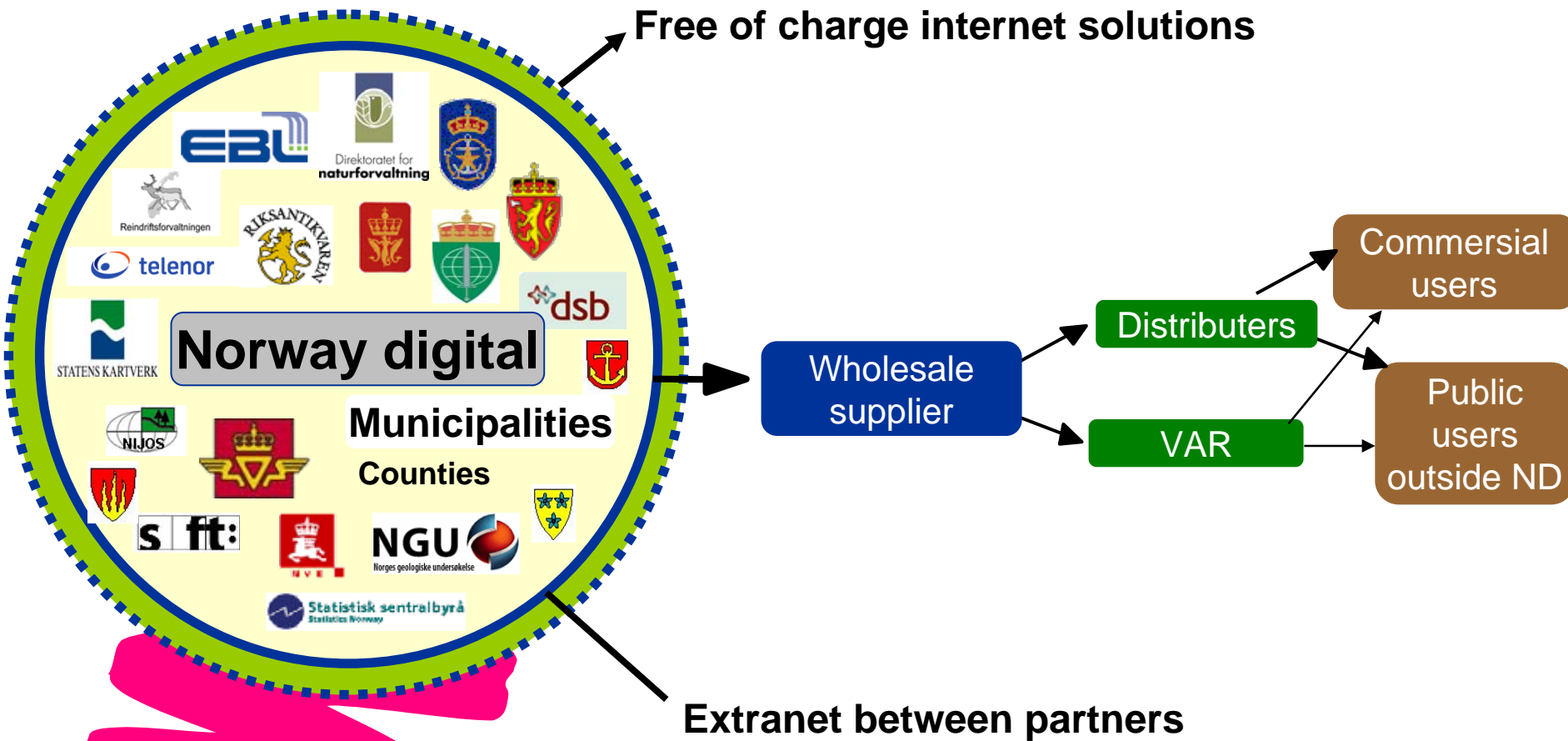
Next Slide ▶

9 slides. Slide number 8.

Levels of eGovernment



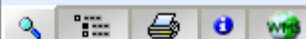
The model



"eNorway 2009 – the digital leap" : Coordination to meet user demands



Hole kommune



Velg søk

Adresse

Gnr Bnr Fnr

Stedsnavn

Barnehager

Velg





Hole kommune

ASV



Velg søk

Adresse

Gnr Bnr Fnr

Stedsnavn

Barnehager

Velg



Hole kommune

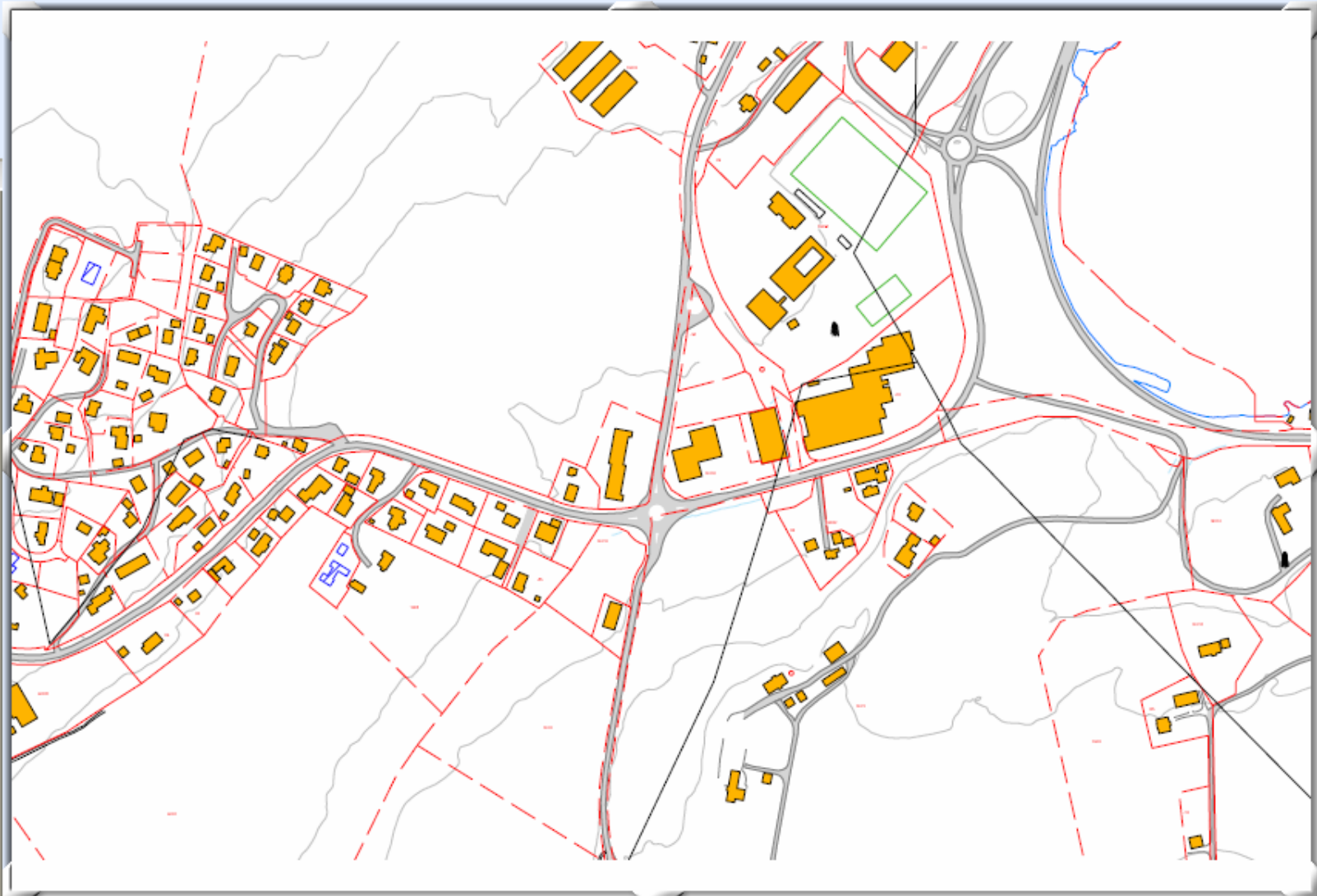


Velg søk

Adresse

Gnr Bnr Fnr

Stedsnavn

 Barnehager Velg 1: 4870 NGO III EPSG:27393



Hole kommune



Bygningsinfo

Kommunenummer

612

GID

192/88/0/0

Bygningsnr

15100605

Løpenummer

0

Bygningstype

111 - Enebolig

Byggstatus

2 - Tatt i bruk

Tatt i bruk dato

15/01/1999

lgangstatt dato

01/07/1998

Godkjent dato

22/06/1998

Antall etasjer

0

Antall boliger

1

Bruksareal bolig

285

Bruksareal annet enn bolig

0

Bruksareal totalt

285

Vannforsyning

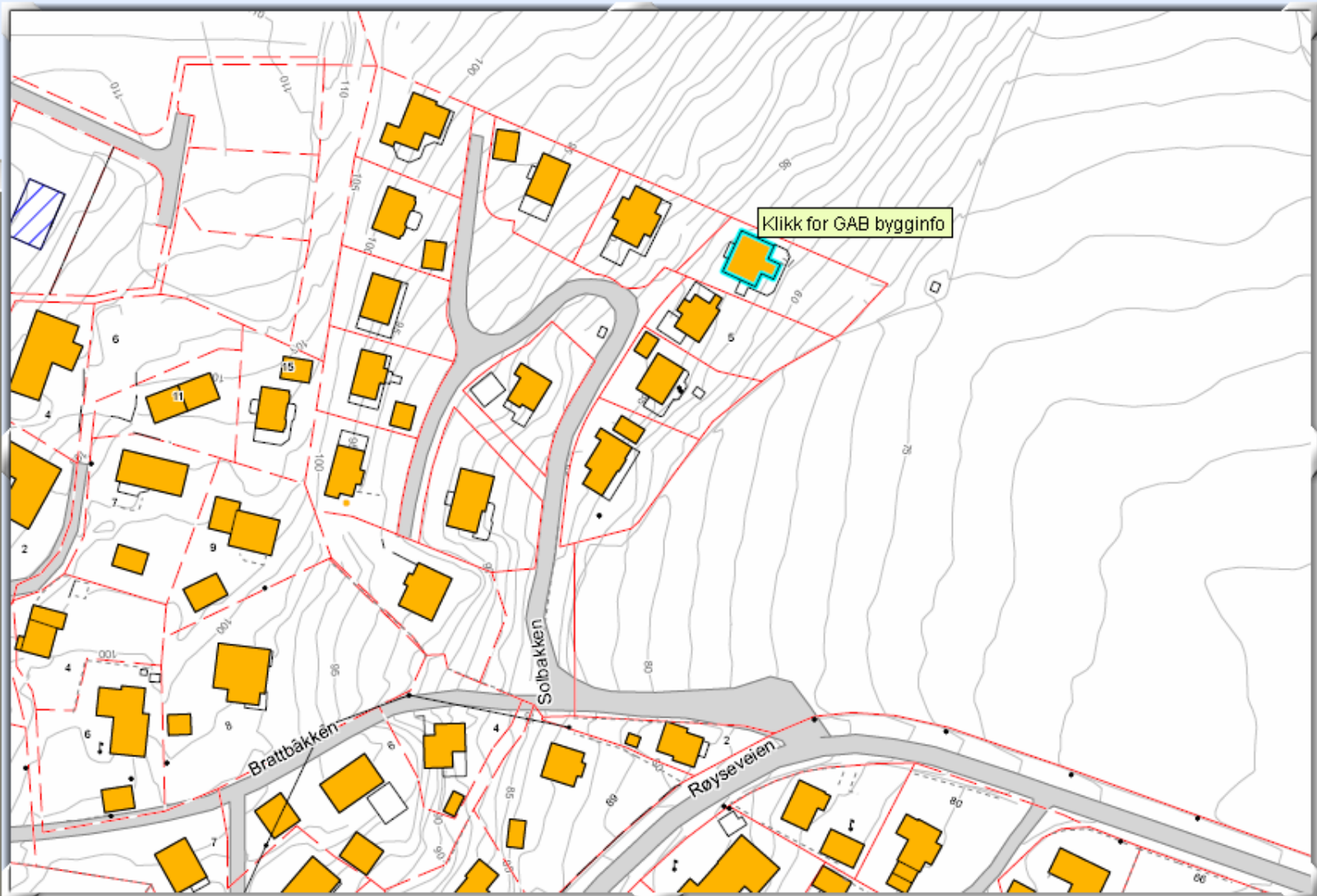
1 - Tilkn. off. vannverk

Kilde annen privat

vannforsyning

Oppgang Etasje Bolig

1 Hovedetasje 1 1



1: 1578

NGO III EPSG:27393

Lessons learned ...

The importance of

- Political support
 - to insure inclusion and interaction
 - to secure data sharing and distribution
 - to facilitate equal opportunities
 - to invite for participation
- Enthusiastic organisations at all levels
- A clear strategy
- Easily access to internet (**PC versus mobil phone**)
- An open, standards based technology
 - Allowing on-line integration from distributed sources
 - Dynamic metadata, both data content and services catalogues

***Still much to do –
especially on eCitizen interaction !!***

eGovernment for eCitizens -
Budapest WS 27 -29 April 2006