



*FIG-AFRICA REGIONAL NETWORK
WORKPLAN PROPOSAL
2023-2026*

FIG- Africa Regional Capacity Development Network

2023-2026 WORKPLAN OUTLINE



1-5

INTRODUCTION and
ARN STRUCTURE

6-10

FIG-ARN WORKPLAN
2023-2026 PROPOSAL

11

CONCLUSION

INTRODUCTION

THE AFRICA REGIONAL NETWORK



- Develop the capacity of African Land Professionals to match with the rapidly changing global trends
- Ensure the present and future relevance of surveying profession across the continent is guaranteed
- Provide a platform on which African MAs can increase their presence and articulate their interest in the FIG

FIG- Africa Regional Capacity Development Network

• INTRODUCTION..contd



Purpose built activities:

workshops

Seminars

Conferences

Increase number, quality and profile of African surveyors



Mentoring program

bridges

intergenerational

gaps

Seamless transition

Recorded important landmarks in line with ARN Vision 2030

FIG-ARN ORGANISATIONAL STRUCTURE

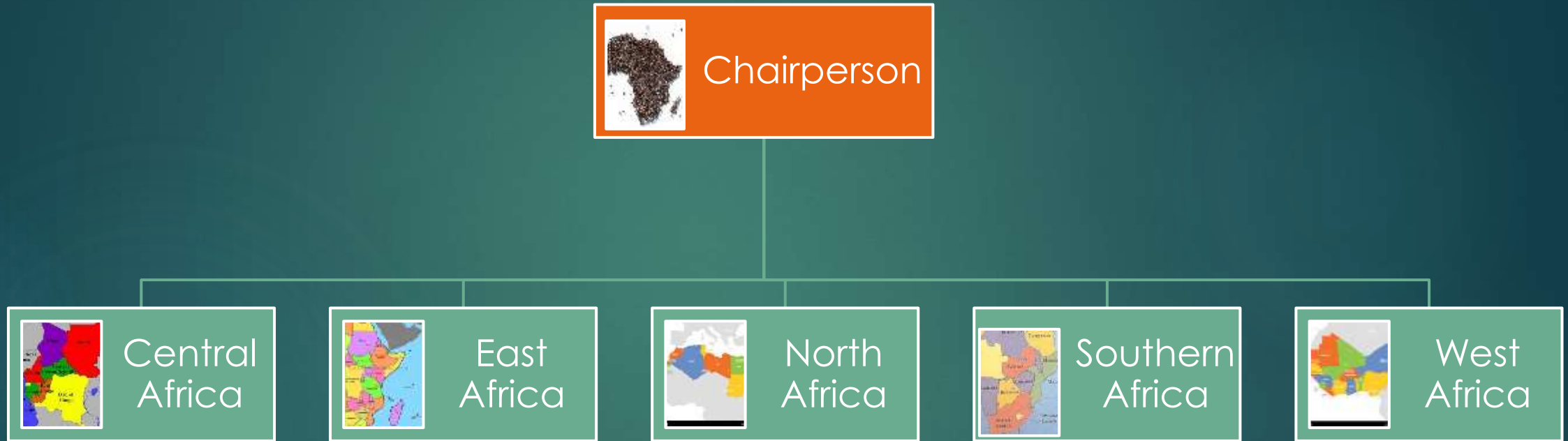


FIG-ARN 2023 – 2026 WORKPLAN PROPOSAL



The 2023-2026 Work plan aims to consolidate and upscale these successes and address some challenges

- 75 percent of African countries are outside the FIG and operate as independent silos
- Great divide between Anglophone and Francophone African Surveyors.
- Young African surveyors higher and diverse trainings
- African women surveyors between 0 to 5.5 percent.

INTRODUCTION

THE AFRICA REGIONAL NETWORK



- Increase the African membership of the FIG
- Improve networking and synergy
- Promote inclusivity in growth and unity in diversity
- Gender-responsive and gender-balance in the profession, and
- Encourage indigenous research, innovation and development

FIG- Africa Regional Capacity Development Network

**WORKPLAN
LAYOUT..Cont**

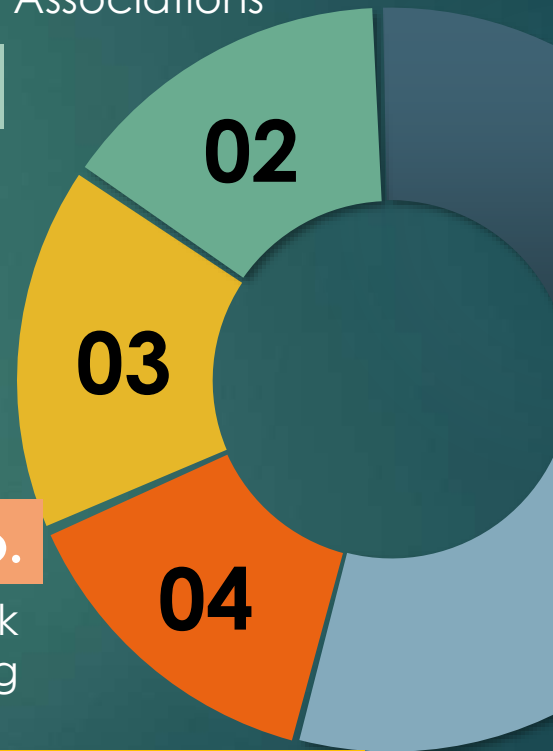
2 No.
High-Level Forum Meetings of Presidents of Africa Member Associations

4 No.
Africa Young Surveyors Summer Camp

3 No.
Africa Women Surveyors Network Conferences

3 No.
Africa Regional Network Conference/FGF Meeting

3 No.
ARN-FIG Mentoring/Train -The
- Trainer Workshops



EXPECTED OUTCOMES 2023-2026 WORK PLAN



increase in
number and
quality of African
MAs



High capacity
global relevance
Future assured YSN



Gender equality
and gender
responsiveness



Greater engagement Anglophone
and Francophone Surveyors



ARN-FIG Mentoring/TTW: Co-operation and Collaboration



African Member Associations

FIG Commissions, Foundation and Tasks force

Corporate Sponsors and Donor Agencies

YSN Africa

Other Member Associations

FIG-ARN 2023 – 2026 WORKPLAN PROPOSAL SCHEMATIC TABLE

YEAR	Q1	Q2	FIG 2023 WW	Q3	Q4
2023	PREPARATIONS	FIG-ARN HLF	Orlando, California	FIG-ARN YLPSC	FIG-ARN WLPC
Date		3-5 May		18-29 Sep	4-9 Dec
Venue		Addis Ababa EAST AFRICA		NIGERIA	TANZANIA, EAST AFRICA
Partnership		African Union		WEST AFRICA	
				ECOWAS	-----
2024	FIG-ARN CONF/FGF	FIG-ARN TTW	FIG 2024 Congress Accra, Ghana	FIG-ARN YLPSC	FIG-ARN WLPC
Date					
Venue	RWANDA	SOUTHERN AFRICA		NORTH AFRICA	CENTRAL AFRICA
2025	FIG-ARN CONF	FIG-ARN 2HLF	FIG 2025 WW Australia	FIG-ARN YLPSC	FIG-ARN TTW
Date					
Venue	NORTH AFRICA	WEST AFRICA		CENTRAL AFRICA	SOUTHERN AFRICA
2026	FIG-ARN CONF	FIG-ARN TTW	FIG 2026 South Africa	FIG-ARN YLPSC	FIG-ARN WLPC
Date					
Venue	WEST AFRICA	CENTRAL AFRICA		SOUTHERN AFRICA	NORTH AFRICA
2026		SUBMISSION OF REPORT			



**THANK YOU FOR
LISTENING**

